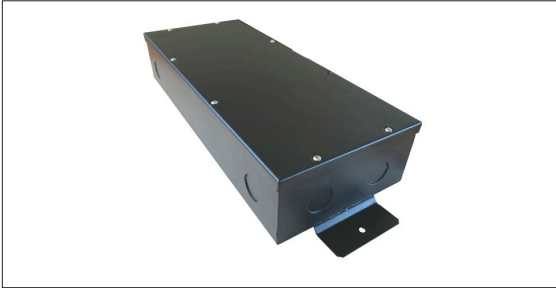
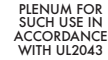


0-10 Warm Dim 96 watt LED Driver



Features

Class 2 constant voltage warm dim LED dimming module rated at 96 watt each. Suitable For Damp Location.



Technical information

Input voltage

120-277V AC, 3.3A, 50/60Hz

Output signal

24 VDC, 4.0 A

Maximum wattage

96 watt circuits

Mounting

Surface mounted with conduit access

Dimming

0-10V (dimmer needs to be capable to dim to 0% without ON/OFF switch)

Ambient Operating Temperature

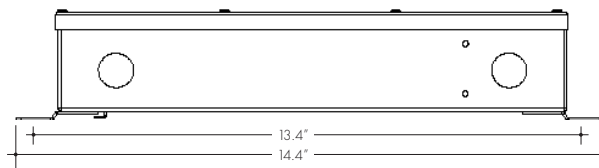
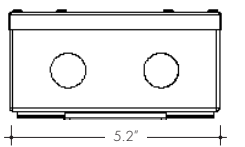
-20C to +35C

JA8 compliant

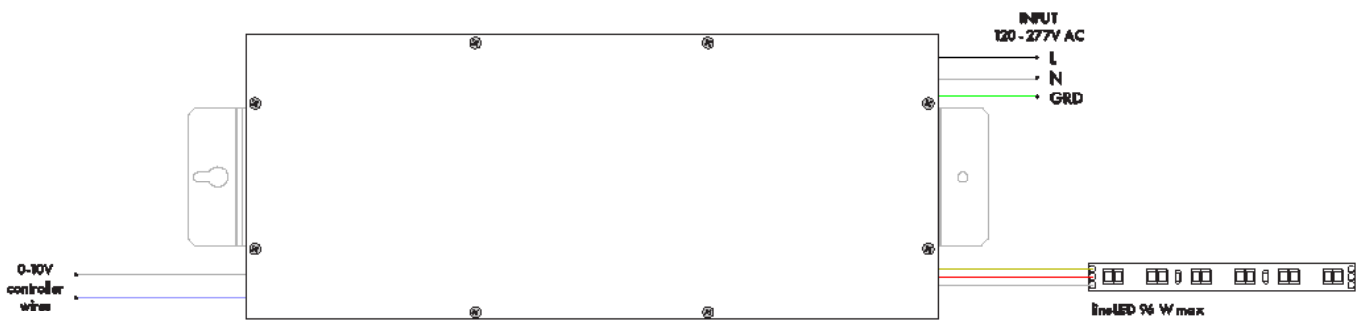
When used with models: ILLDW36, ILLDW52, or ILLDW73STP

Weight

3.9 lbs



Wiring diagram



Ordering code

MODEL	POWER	OUTPUT
PS010WD	96	24
PS010WD - 0-10V Warm dim LED Driver	96 - 96 Watt	24 - 24 VDC