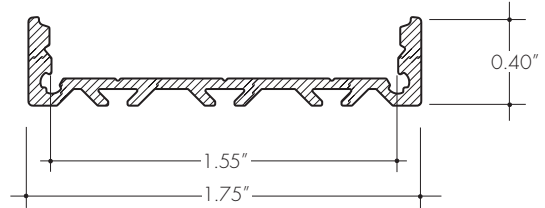
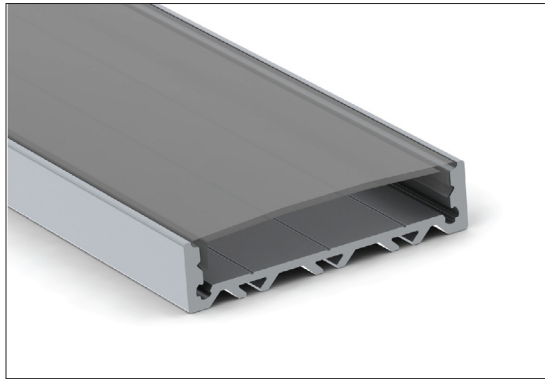
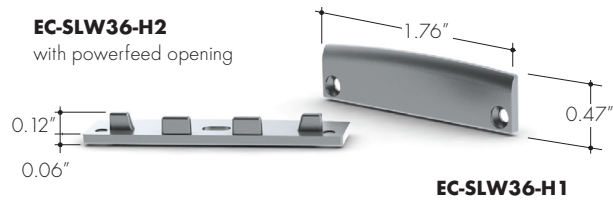


The SLW36 Channel is a linear aluminum extrusion that has been designed to fit many high output LED lighting needs. The wide profile design can accommodate larger LED strips making the SLW36 extrusion ideal for bright general lighting applications. Substantial aluminum mass in profile provides excellent heat sink and physical protection for high power LEDs. Extrusion and lens are field-cutable.



### Accessories - endcaps



SLW36 assembly

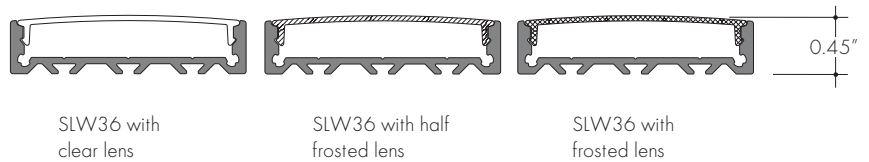
### Technical information

Finish: Silver anodized

Available length: 78.75"

Diffuser: polycarbonate, snap-in-place, UV resistant  
Choice of clear, frosted, or half frosted lens with linear spread

Mounting: screw fasteners



SLW36 with clear lens

SLW36 with half frosted lens

SLW36 with frosted lens

### Ordering code

MODEL	LENGTH	DIFFUSER	FINISH
SLW36	78	C	SA
SLW36 - SLW36 aluminum extrusion	78 - 78.75"	C - Clear F - Frosted HF - 50% Frosted	SA - Silver anodized