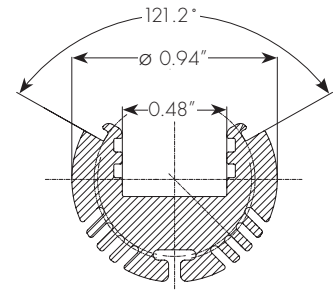


The RO Channel is a linear aluminum extrusion that has been designed to fit many LED lighting needs. Multiple mounting bracket options allow for great flexibility in any application; from directional lighting solutions to secure fixed installations like a closet rod light fixture. Substantial aluminum mass in profile provides excellent heat sink for high power LEDs. RO linear aluminum extrusion comes with three choices of optical lenses. Extrusion and lenses are field cuttable. All other accessories sold separately (page 2).



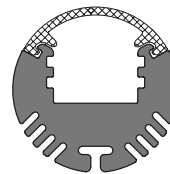
Technical information

Finish: Silver anodized

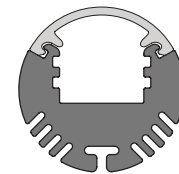
Available length: 39.40", 78.75" & 118"

Diffuser: polycarbonate, snap-in-place, UV resistant
Choice of clear or frosted lens with linear spread

Mounting: options of fixed, adjustable, and suspended brackets (page 2)



RO extrusion with frosted lens



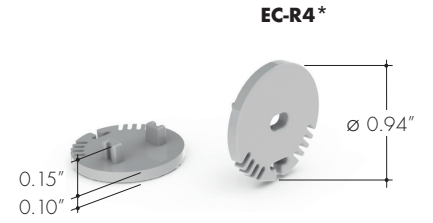
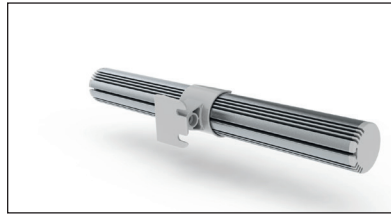
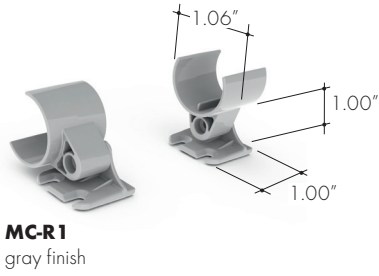
RO extrusion with clear lens

Ordering code

Model	Length	Diffuser	Finish
RO	39	C	SA
RO - RO aluminum extrusion	39 - 39.40" 78 - 78.75" 118 - 118.19"	C - Clear F - Frosted	SA - Silver anodized

Mounting brackets

End-caps



EC-R3*
metal finish
* not compatible with narrow lens

