



Features

The RO Channel is a linear aluminum extrusion that has been designed to fit many LED lighting needs. Multiple mounting bracket options allow for great flexibility in any application; from directional lighting solutions to secure fixed installations like a closet rod light fixture. Substantial aluminum mass in profile provides excellent heat sink for high power LEDs. RO linear aluminum extrusion comes with three choices of optical lenses. Extrusion and lenses are field cuttable. All other accessories sold separately (page 2).

Finish

Silver anodized, White, Black, Bronze

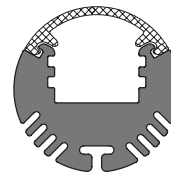
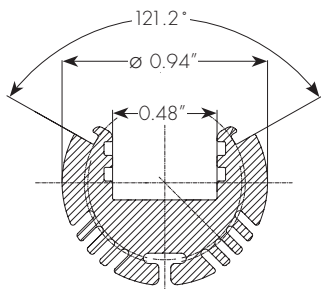
Diffuser Lens

Polycarbonate, slide-in-place, UV resistant

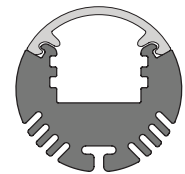
Mounting

Multiple mounting clip options ordered separately

Product Dimensions



RO extrusion with Frosted Lens



RO extrusion with Clear Lens

Lens Options	
Actual Length	-39"
	-78"
	-118"
Available Lenses	- Clear
	- Frosted

Ordering Code

MODEL	LENGTH	LENS	FINISH ²
RO - RO Channel	39 - 39" 78 - 78" 118 - 118" ¹	F - Frosted C - Clear	SA - Silver anodized WH - White BK - Black BZ - Bronze

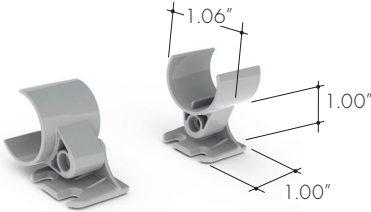
1 - For Channels and Lenses over 90", incremental shipping charges will apply.

2 - Non SA finishes may have extended lead times. Custom RALs are available, please consult Inside Sales with specific request.

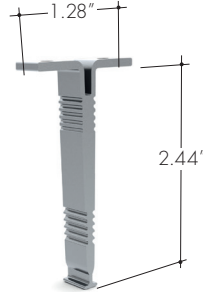
All accessories sold separately.

Mounting Brackets

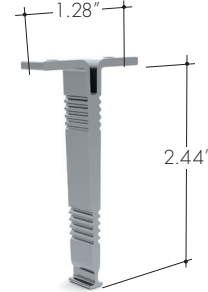
MC-R1
Gray Finish



MC-R3
Silver Anodized Mounting Clip

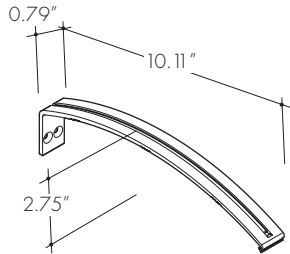


MC-R3-XX
Mounting Clip

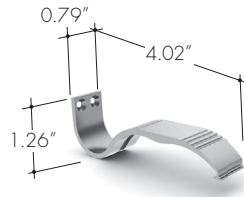


XX	Color
WH	White
BK	Black
BZ	Bronze

MC-RO-AA
Metal Finish



MC-RO-WA
Metal Finish

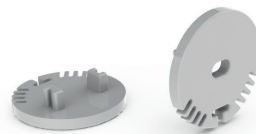


Endcaps

EC-R3-XX
Endcap

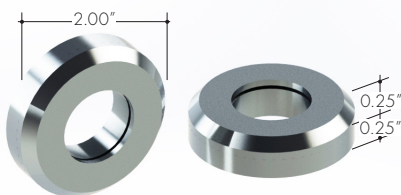


EC-R4-XX
Endcap with hole for powerfeed



XX	Color
SA	Silver Anodized
WH	White
BK	Black
BZ	Bronze

MC-RO-MF-XX
Mounting Cover



MC-R2
Mounting Endcap

