

HONGPU GONIOPHOTOMETERS SYSTEM TEST REPORT

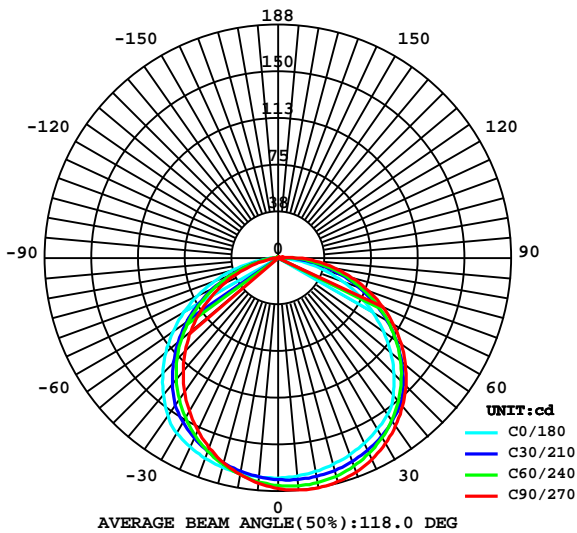
LUMINAIRE PHOTOMETRIC TEST REPORT

Report number:

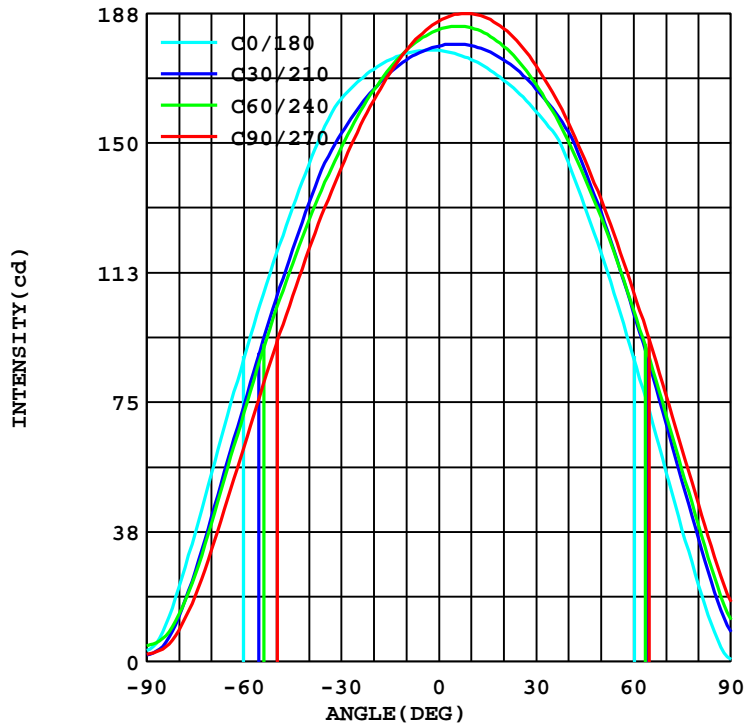
MANUFACTURER:		Address:	
NAME: KBM-F-H-30K-24V		TYPE:	WEIGHT:N/A
SPECIFICATION:		DIMENSION: 46"×0.5"×0.82"	SERIAL No.:N/A

DATA OF LAMP		I <sub>max</sub> (cd)	187.5	S/MH(C0/180)	1.36
MODEL		EFFICIENCY(%)	100.0	S/MH(C90/270)	1.16
NOMINAL POWER(W)	12	TOTAL FLUX(lm)	565.57	Voltage(V)	24.00
RATED VOLTAGE(V)	24	EFFICIENCY(lm/W)	44.4	Current(A)	0.530
NOMINAL FLUX(lm)	565.6	η up(%)	1.7	Power(W)	12.73
LAMPS QUANTITY	1	η down(%)	98.3	Power Factor(PF)	1.000
TEST VOLTAGE(V)	24.0	Effective Flux(lm)	547.8	EI	0.268

LUMINOUS INTENSITY DISTRIBUTION



LUMINOUS INTENSITY DISTRIBUTION



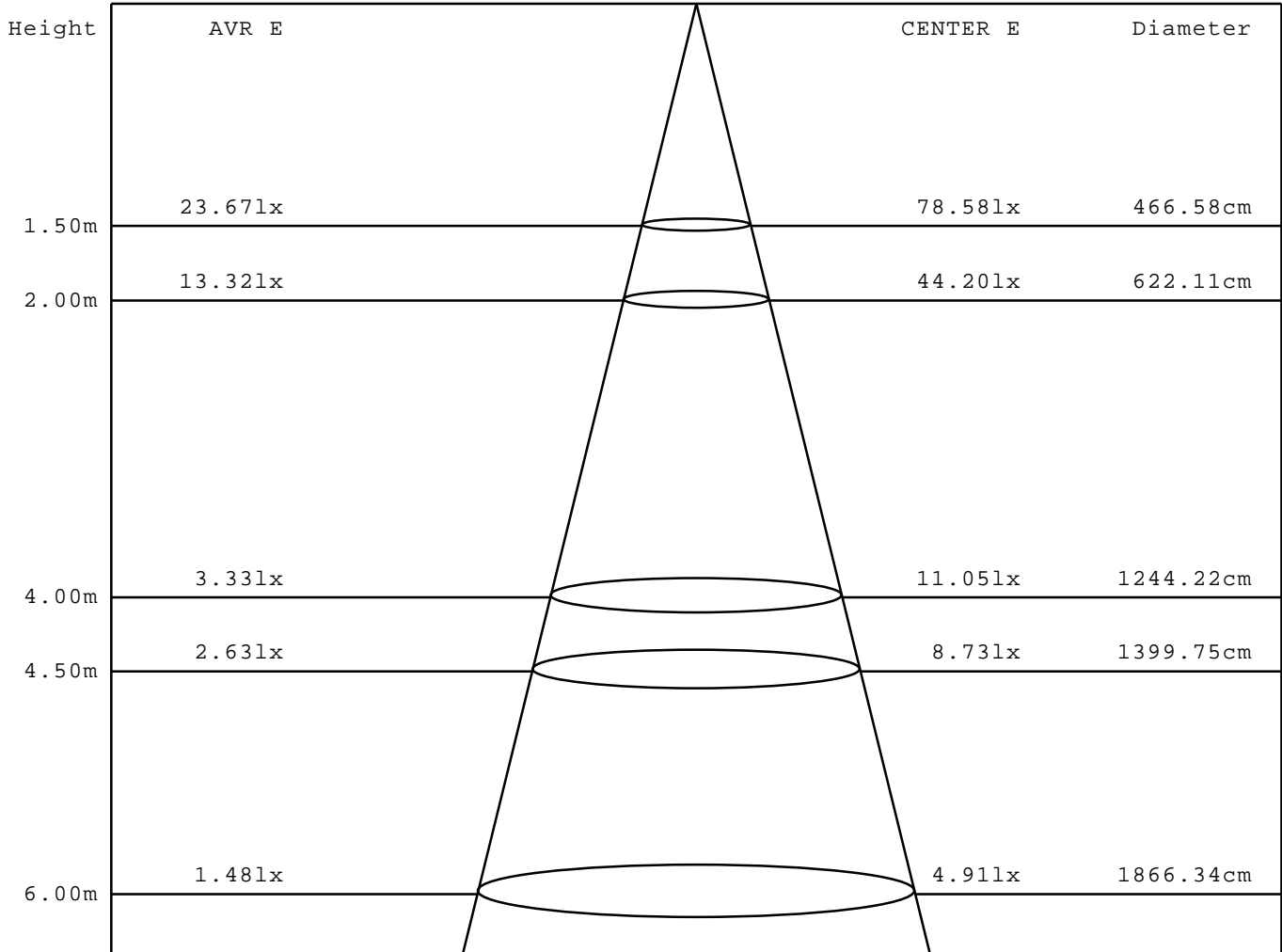
Test System:HOPOO  
 Temperature:25.3DEG  
 Operators:  
 Test Date:07-21-2022

Test Set: 5.0deg/s C-Gamma (TYPE C)  
 Humidity:65.0%  
 Test Distance:8.368 m  
 Remarks: 24 Volts 14 Sections

AVERAGE AND CENTER E Figure

Report number:

MANUFACTURER:	Address:	
NAME: KBL-F-H-30K-24V	TYPE:	WEIGHT:N/A
SPECIFICATION:	DIMENSION:	SERIAL No.:N/A



Angle:114.5deg

Test System:HOPOO  
 Temperature:25.3DEG  
 Operators:  
 Test Date:07-21-2022

Test Set: 5.0deg/s C-Gamma (TYPE C)  
 Humidity:65.0%  
 Test Distance:8.368 m  
 Remarks: 24 Volts 14 Sections

HONGPU GONIOPHOTOMETERS SYSTEM TEST REPORT

ZONAL FLUX DIAGRAM

Report number:

<b>MANUFACTURER:</b>	<b>Address:</b>	
<b>NAME: KBL-F-H-30K-24V</b>	<b>TYPE:</b>	<b>WEIGHT:N/A</b>
<b>SPECIFICATION:</b>	<b>DIMENSION:</b>	<b>SERIAL No.:N/A</b>

$\gamma$	C0	C45	C90	C135	C180	C225	C270	C315	$\gamma$	$\Phi$ zone	$\Phi$ total
5.0	176.7	178.5	181.7	177.7	175.8	181.1	187.1	180.5	0- 5	4.306	4.306
10.0	175.8	175.3	176.7	174.6	174.1	180.7	187.4	180.2	5- 10	12.80	17.10
15.0	174.1	171.0	170.2	170.4	171.6	179.0	186.1	178.7	10- 15	20.94	38.05
20.0	171.3	165.4	162.3	165.1	168.2	176.0	183.1	176.0	15- 20	28.51	66.56
25.0	167.6	158.6	153.0	158.5	164.1	171.8	178.6	172.1	20- 25	35.28	101.8
30.0	162.8	150.7	142.7	150.8	159.1	166.3	172.3	167.0	25- 30	41.05	142.9
35.0	154.8	141.5	131.3	141.7	153.5	159.7	164.6	160.7	30- 35	45.65	188.5
40.0	143.5	129.8	119.0	130.0	144.3	151.8	155.7	153.1	35- 40	48.73	237.2
45.0	131.2	117.1	105.8	117.0	131.6	141.2	145.3	142.9	40- 45	50.06	287.3
50.0	117.8	103.3	91.59	102.7	118.1	129.2	133.8	131.0	45- 50	49.59	336.9
55.0	103.3	88.61	77.02	87.77	103.7	115.9	121.1	117.7	50- 55	47.47	384.4
60.0	87.80	73.13	62.11	72.12	88.29	101.6	107.2	102.8	55- 60	43.72	428.1
65.0	71.14	56.89	46.91	55.87	72.19	86.51	92.64	87.21	60- 65	38.50	466.6
70.0	54.26	40.89	32.28	39.80	55.10	70.37	77.37	70.72	65- 70	32.01	498.6
75.0	37.32	25.73	19.11	24.64	38.30	53.95	61.62	53.95	70- 75	24.68	523.3
80.0	21.42	13.16	8.962	11.93	22.19	37.60	45.65	37.39	75- 80	17.09	540.4
85.0	8.682	5.566	3.641	4.306	8.542	22.26	30.18	21.95	80- 85	10.18	550.6
90.0	3.291	3.221	2.170	2.275	0.560	10.36	17.36	10.08	85- 90	5.137	555.7
95.0	2.450	2.310	1.750	1.855	0.210	4.586	9.313	4.341	90- 95	2.498	558.2
100.0	1.680	1.715	1.470	1.575	0.280	2.765	5.741	2.520	95-100	1.456	559.7
105.0	1.540	1.435	1.050	1.260	0.420	1.645	3.921	1.540	100-105	0.978	560.7
110.0	1.400	1.295	0.910	1.120	0.490	1.120	3.011	1.015	105-110	0.742	561.4
115.0	1.400	1.225	0.840	1.050	0.560	0.910	1.540	0.805	110-115	0.566	562.0
120.0	1.330	1.190	0.700	0.980	0.700	0.910	1.400	0.840	115-120	0.487	562.5
125.0	1.330	0.980	0.770	0.980	0.770	0.910	1.400	0.840	120-125	0.455	562.9
130.0	1.330	0.945	0.700	0.980	0.770	0.945	1.330	0.875	125-130	0.420	563.3
135.0	1.260	0.980	0.770	1.015	0.840	0.910	1.260	0.910	130-135	0.390	563.7
140.0	1.260	0.910	0.770	0.945	0.910	0.910	1.260	0.875	135-140	0.357	564.1
145.0	1.260	0.945	0.770	0.910	0.910	0.945	1.260	0.945	140-145	0.323	564.4
150.0	1.260	0.945	0.700	0.910	0.980	0.945	1.190	0.910	145-150	0.286	564.7
155.0	1.260	0.945	0.770	0.875	1.050	0.980	1.260	0.980	150-155	0.247	564.9
160.0	1.260	0.910	0.770	0.910	1.050	0.910	1.260	0.945	155-160	0.207	565.1
165.0	1.260	0.945	0.770	0.910	1.190	1.015	1.190	0.910	160-165	0.164	565.3
170.0	1.260	0.945	0.770	0.945	1.190	0.980	1.260	0.945	165-170	0.119	565.4
175.0	1.260	0.945	0.840	0.945	1.190	0.945	1.190	0.980	170-175	0.072	565.5
180.0	1.190	0.980	0.910	0.875	1.330	1.015	1.190	0.945	175-180	0.024	565.5
DEG	LUMINOUS INTENSITY:cd								UNIT:lm		

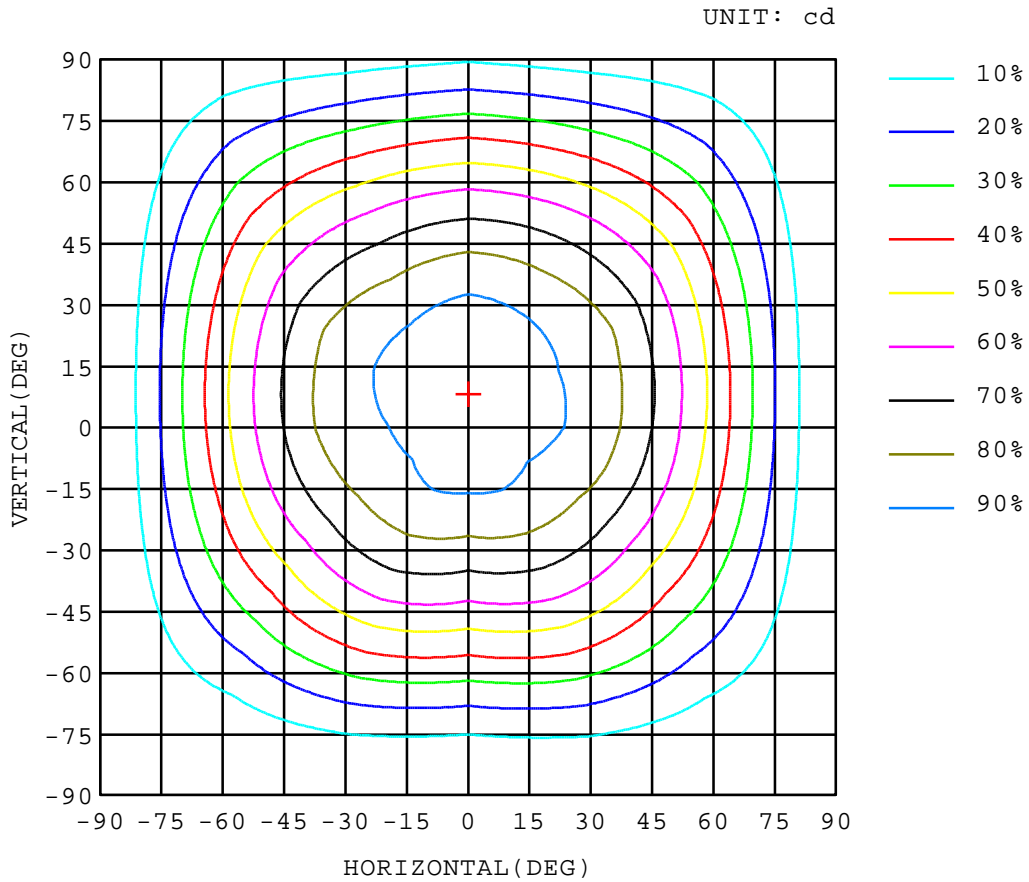
Test System:HOPOO  
 Temperature:25.3DEG  
 Operators:  
 Test Date:07-21-2022

Test Set: 5.0deg/s C-Gamma (TYPE C)  
 Humidity:65.0%  
 Test Distance:8.368 m  
 Remarks: 24 Volts 14 Sections

ISOCANDELA DIAGRAM

Report number:

MANUFACTURER:	Address:	
NAME: KBL-F-H-30K-24V	TYPE:	WEIGHT:N/A
SPECIFICATION:	DIMENSION:	SERIAL No.:N/A



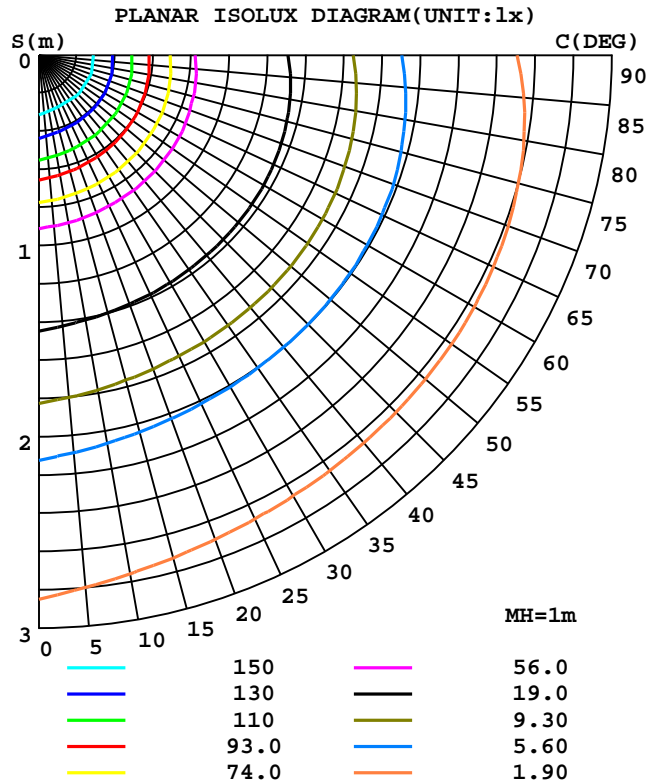
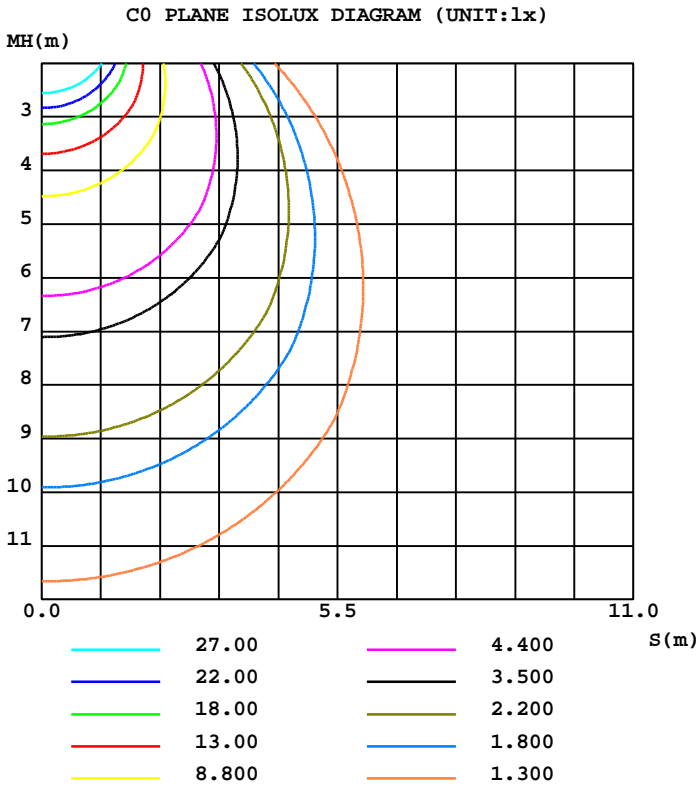
Test System:HOPOO  
 Temperature:25.3DEG  
 Operators:  
 Test Date:07-21-2022

Test Set: 5.0deg/s C-Gamma (TYPE C)  
 Humidity:65.0%  
 Test Distance:8.368 m  
 Remarks: 24 Volts 14 Sections

ISOLUX DIAGRAM

Report number:

MANUFACTURER:	Address:	
NAME: KBL-F-H-30K-24V	TYPE:	WEIGHT:N/A
SPECIFICATION:	DIMENSION:	SERIAL No.:N/A



Test System:HOPOO  
 Temperature:25.3DEG  
 Operators:  
 Test Date:07-21-2022

Test Set: 5.0deg/s C-Gamma (TYPE C)  
 Humidity:65.0%  
 Test Distance:8.368 m  
 Remarks: 24 Volts 14 Sections

HONGPU GONIOPHOTOMETERS SYSTEM TEST REPORT

LUMINOUS DISTRIBUTION INTENSITY DATA

Report number:

<b>MANUFACTURER:</b>	<b>Address:</b>	
<b>NAME: KBL-F-H-30K-24V</b>	<b>TYPE:</b>	<b>WEIGHT:N/A</b>
<b>SPECIFICATION:</b>	<b>DIMENSION:</b>	<b>SERIAL No.:N/A</b>

UNIT: cd

C(DEG)\ γ (DEG)	0	30	60	90	120	150	180	210	240	270	300	330
0.0	177	178	183	185	183	177	177	178	183	185	183	177
5.0	177	177	181	182	180	175	176	179	184	187	184	177
10.0	176	174	177	177	177	173	174	178	183	187	184	177
15.0	174	170	172	170	172	169	172	177	181	186	182	175
20.0	171	166	165	162	166	165	168	174	178	183	179	173
25.0	168	160	158	153	158	159	164	171	173	179	175	170
30.0	163	153	149	143	150	152	159	166	167	172	169	165
35.0	155	144	139	131	140	144	154	160	159	165	162	160
40.0	144	132	127	119	129	132	144	153	150	156	153	153
45.0	131	119	115	106	116	118	132	142	140	145	143	143
50.0	118	105	102	91.5	102	104	118	130	129	134	132	130
55.0	103	89.8	87.3	77.0	86.6	88.8	104	116	116	121	119	117
60.0	87.8	74.2	72.0	62.1	71.0	73.1	88.2	101	102	107	104	101
65.0	71.1	58.0	55.7	46.9	54.6	57.0	72.1	85.5	87.4	92.6	88.7	85.7
70.0	54.2	41.8	39.9	32.2	38.8	40.7	55.1	69.1	71.5	77.3	72.4	68.9
75.0	37.3	26.2	25.2	19.1	24.1	25.1	38.3	52.3	55.5	61.6	56.0	51.8
80.0	21.4	12.8	13.5	8.96	12.4	11.4	22.1	35.7	39.4	45.6	39.8	34.9
85.0	8.68	4.41	6.72	3.64	5.74	2.87	8.54	20.0	24.4	30.1	24.5	19.3
90.0	3.29	1.89	4.55	2.17	3.78	0.77	0.56	8.54	12.1	17.3	12.2	7.91
95.0	2.45	0.98	3.64	1.75	3.15	0.56	0.21	3.85	5.32	9.31	5.18	3.50
100.0	1.68	0.35	3.08	1.47	2.73	0.42	0.28	2.73	2.80	5.74	2.66	2.38
105.0	1.54	0.28	2.59	1.05	2.17	0.35	0.42	1.61	1.68	3.92	1.54	1.54
110.0	1.40	0.35	2.24	0.91	1.89	0.35	0.49	1.54	0.70	3.01	0.56	1.47
115.0	1.40	0.35	2.10	0.84	1.68	0.42	0.56	1.54	0.28	1.54	0.14	1.47
120.0	1.33	0.42	1.96	0.70	1.54	0.42	0.70	1.47	0.35	1.40	0.28	1.40
125.0	1.33	0.42	1.54	0.77	1.47	0.49	0.77	1.40	0.42	1.40	0.35	1.33
130.0	1.33	0.49	1.40	0.70	1.40	0.56	0.77	1.40	0.49	1.33	0.42	1.33
135.0	1.26	0.56	1.40	0.77	1.40	0.63	0.84	1.33	0.49	1.26	0.49	1.33
140.0	1.26	0.56	1.26	0.77	1.33	0.56	0.91	1.26	0.56	1.26	0.49	1.26
145.0	1.26	0.63	1.26	0.77	1.26	0.56	0.91	1.26	0.63	1.26	0.63	1.26
150.0	1.26	0.70	1.19	0.70	1.19	0.63	0.98	1.26	0.63	1.19	0.63	1.19
155.0	1.26	0.70	1.19	0.77	1.12	0.63	1.05	1.26	0.70	1.26	0.77	1.19
160.0	1.26	0.70	1.12	0.77	1.12	0.70	1.05	1.19	0.63	1.26	0.77	1.12
165.0	1.26	0.77	1.12	0.77	1.05	0.77	1.19	1.26	0.77	1.19	0.70	1.12
170.0	1.26	0.77	1.12	0.77	1.12	0.77	1.19	1.19	0.77	1.26	0.77	1.12
175.0	1.26	0.77	1.12	0.84	1.12	0.77	1.19	1.12	0.77	1.19	0.77	1.19
180.0	1.19	0.91	1.05	0.91	0.98	0.77	1.33	1.12	0.91	1.19	0.84	1.05

Test System:HOPOO  
 Temperature:25.3DEG  
 Operators:  
 Test Date:07-21-2022

Test Set: 5.0deg/s C-Gamma (TYPE C)  
 Humidity:65.0%  
 Test Distance:8.368 m  
 Remarks: 24 Volts 14 Sections