

Features

- Cylindrical shape with 360° of diffuse, even illumination.
- 24VDC Class 2 fixtures made to order up to 48".
- Suitable for wall mount applications
- Class 2 listed for damp locations
- Dot free even illumination
- Integral power supply included, fits inside a single gang box behind the backplate. 120 VAC only, dimmable with MLV, ELV, and Incandescent dimmers (see dimmer compatibility chart)
- LL72 options offer premium quality and vibrant colors with R9 values up to 97
- HE options offer best in class output and efficacy with over 2000 lm/ft and over 90 lm/W
- Proprietary strong bond solder method handles up to 50 lbs of pull force on wire leads and connectors
- 5 Year warranty

Finish Options

- Silver anodized
- Bronze powder coated
- Black powder coated
- White powder coated



Technical Information

MODEL	LL72 High Color Quality			HE48 High Efficacy			HE64 High Efficacy	
	SO	HO	VHO	LO	SO	MO	HO	SO
Lumens Output (3000K)	548 lm/ft	891 lm/ft	1083 lm/ft	534 lm/ft	740 lm/ft	988 lm/ft	1584 lm/ft	2005 lm/ft
Average Power Consumption (for a 4' section)	8.4 W/ft	14.4 W/ft	18 W/ft	5.7 W/ft	8.4 W/ft	10.5 W/ft	19.5 W/ft	22.5 W/ft
Efficacy	65 lm/W	62 lm/W	60 lm/W	94 lm/W	88 lm/W	94 lm/W	81 lm/W	89 lm/W

LL72

CCT	Multiplier (reference - 3000K)	CRI	TM-30		
			R _f	R _g	R ₉
1900K	0.55	96	94	97	90
2200K	0.70	96	95	101	89
2400K	0.72	98	97	101	91
2700K	0.74	97	96	101	91
3000K	1.00	97	95	104	97
3500K	1.02	97	94	105	97
4100K	1.07	97	90	99	97

HE48/HE64

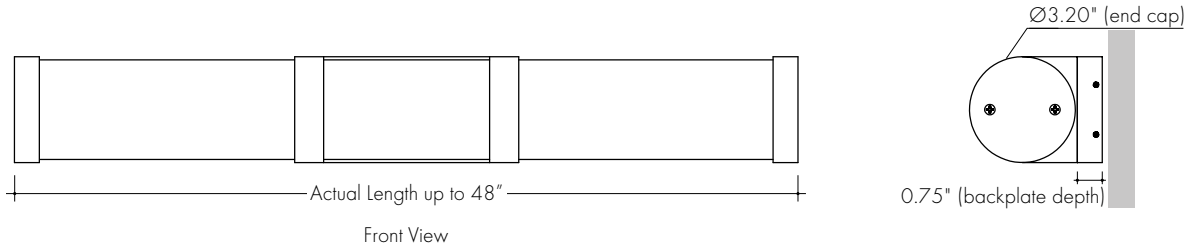
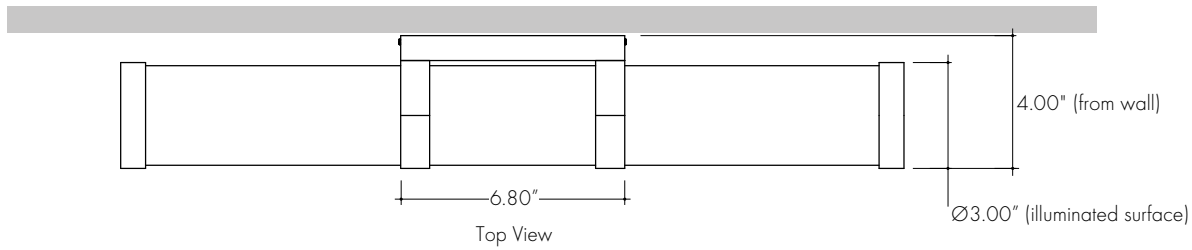
CCT	Multiplier (reference - 3000K)	CRI	TM-30		
			R _f	R _g	R ₉
2700K	0.94	92	90	99	58
3000K	1.00	92	89	99	57
3500K	1.02	92	89	99	60
4000K	1.02	92	86	94	71

Ordering Code

MODEL	LENGTH ¹	OUTPUT	CCT	LENS ²	FINISH ³
EXPV - Explorer Vanity	12"-48" 1" increments	LL72SO - Standard LL72HO - High LL72VHO - Very High	19K - 1900K 22K - 2200K 24K - 2400K 27K - 2700K 30K - 3000K 35K - 3500K 41K - 4100K	F - Frosted	SA - Silver BK - Black BZ - Bronze WH - White
	12"-48" 2" increments	HE48LO - Low HE48SO - Standard HE48MO - Medium HE48HO - High HE64SO - Standard	27K - 2700K 30K - 3000K 35K - 3500K 40K - 4000K		

1 - See end of document for Power Consumption tables and Actual Lengths. Custom lengths and increments are available, please consult factory with specific request.
 2 - All HE48 and HE64 options can be used to comply with Title 24 JAS8. LL72 options can be used to comply with Title 24 JAS8 depending on output and CCT selections. See multiplier charts to calculate specific efficacy.
 3 - BK, BZ, and WH finishes may have extended lead times. Custom RALs are available, please consult Inside Sales for specific needs.

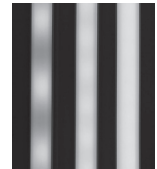
Product Dimensions



Lens Option / Light Transmission

LED Dotting Per Output/Lens

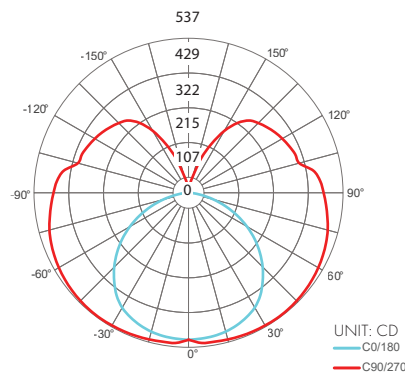
Output Type	Lens Type
	Frosted
LL72SO	ND
LL72HO	ND
LL72VHO	ND
HE48LO	ND
HE48SO	ND
HE48MO	ND
HE48HO	ND
HE64SO	ND



CD SD ND
 CD - Clear Dotting
 SD - Slight Dotting
 ND - No Dotting

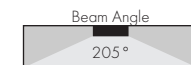
Photometry

EXPV-48-30K-LL72VHO-F
 Explorer Vanity, 4ft, 3000K, VHO, Frosted Lens



Zonal Lumen Summary 3000K

Zone	Lumen	% Fixture
0-30	477	11.0%
0-40	818	18.9%
0-60	1636	37.8%
0-90	2823	65.2%
Total	4332	100.0%



Power Consumption

Tested at full power with PSD Series power supplies.

Standard Nominal Lengths offered provide minimal shadowing. For alternate lengths, please contact factory with specific request.

LL72

Nominal Length (in)	Actual Length	Watts			Nominal Length (in)	Actual Length	Watts			Nominal Length (in)	Actual Length	Watts		
		SO	HO	VHO			SO	HO	VHO			SO	HO	VHO
12	11 4/16	8.0	13.1	18.6	47	46	30.0	50.2	66.4	82	-	-	-	
13	12 7/16	8.0	13.1	18.6	48	47 3/16	30.7	51.2	67.8	83	-	-	-	
14	13 9/16	8.0	13.1	18.6	49	-	-	-	-	84	-	-	-	
15	14 12/16	8.7	14.3	20.2	50	-	-	-	-	85	-	-	-	
16	15 14/16	9.4	15.6	21.8	51	-	-	-	-	86	-	-	-	
17	-	-	-	-	52	-	-	-	-	87	-	-	-	
18	17 1/16	10.1	16.8	23.4	53	-	-	-	-	88	-	-	-	
19	18 3/16	10.9	18.1	25.0	54	-	-	-	-	89	-	-	-	
20	19 6/16	11.6	19.4	26.6	55	-	-	-	-	90	-	-	-	
21	20 8/16	13.1	21.9	29.8	56	-	-	-	-	91	-	-	-	
22	21 11/16	13.8	23.1	31.4	57	-	-	-	-	92	-	-	-	
23	22 13/16	14.5	24.4	33.0	58	-	-	-	-	93	-	-	-	
24	-	-	-	-	59	-	-	-	-	94	-	-	-	
25	24	15.2	25.7	34.6	60	-	-	-	-	95	-	-	-	
26	25 3/16	16.0	26.9	36.2	61	-	-	-	-	96	-	-	-	
27	26 5/16	16.7	28.2	37.8	62	-	-	-	-					
28	27 8/16	17.4	29.3	39.3	63	-	-	-	-					
29	28 10/16	18.7	31.5	42.2	64	-	-	-	-					
30	29 13/16	19.4	32.6	43.6	65	-	-	-	-					
31	30 15/16	20.0	33.7	45.1	66	-	-	-	-					
32	-	-	-	-	67	-	-	-	-					
33	32 2/16	20.7	34.8	46.5	68	-	-	-	-					
34	33 4/16	21.3	35.9	48.0	69	-	-	-	-					
35	34 7/16	22.0	37.0	49.4	70	-	-	-	-					
36	35 9/16	23.3	39.2	52.3	71	-	-	-	-					
37	36 12/16	24.0	40.3	53.8	72	-	-	-	-					
38	37 14/16	24.7	41.5	55.2	73	-	-	-	-					
39	-	-	-	-	74	-	-	-	-					
40	39 1/16	25.3	42.5	56.6	75	-	-	-	-					
41	40 3/16	26.0	43.6	58.0	76	-	-	-	-					
42	41 6/16	26.7	44.7	59.4	77	-	-	-	-					
43	42 8/16	28.0	46.9	62.2	78	-	-	-	-					
44	43 11/16	28.7	48.0	63.6	79	-	-	-	-					
45	44 14/16	29.3	49.1	65.0	80	-	-	-	-					
46	-	-	-	-	81	-	-	-	-					

Power Consumption

Tested at full power with PSD Series power supplies.

Standard Nominal Lengths offered provide minimal shadowing. For alternate lengths, please contact factory with specific request.

HE48

Nominal Length (in)	Actual Length	Watts				Nominal Length (in)	Actual Length	Watts				Nominal Length (in)	Actual Length	Watts			
		LO	SO	MO	HO			LO	SO	MO	HO			LO	SO	MO	HO
12	11 13/16	5.1	7.4	10.4	17.2	47	—	—	—	—	82	—	—	—	—		
13	—	—	—	—	—	48	47 4/16	20.6	32.0	39.8	74.0	83	—	—	—	—	
14	13 13/16	5.1	7.4	10.4	17.2	49	—	—	—	—	84	—	—	—	—		
15	—	—	—	—	—	50	—	—	—	—	85	—	—	—	—		
16	15 12/16	6.1	8.9	12.1	21.6	51	—	—	—	—	86	—	—	—	—		
17	—	—	—	—	—	52	—	—	—	—	87	—	—	—	—		
18	17 12/16	7.1	10.4	13.9	26.1	53	—	—	—	—	88	—	—	—	—		
19	—	—	—	—	—	54	—	—	—	—	89	—	—	—	—		
20	19 11/16	8.1	11.8	15.6	30.6	55	—	—	—	—	90	—	—	—	—		
21	—	—	—	—	—	56	—	—	—	—	91	—	—	—	—		
22	21 11/16	9.1	13.3	17.4	35.1	57	—	—	—	—	92	—	—	—	—		
23	—	—	—	—	—	58	—	—	—	—	93	—	—	—	—		
24	23 10/16	10.1	14.7	19.1	39.6	59	—	—	—	—	94	—	—	—	—		
25	—	—	—	—	—	60	—	—	—	—	95	—	—	—	—		
26	25 10/16	11.1	16.2	20.9	44.1	61	—	—	—	—	96	—	—	—	—		
27	—	—	—	—	—	62	—	—	—	—	—	—	—	—	—		
28	27 9/16	12.2	17.7	22.6	47.3	63	—	—	—	—	—	—	—	—	—		
29	—	—	—	—	—	64	—	—	—	—	—	—	—	—	—		
30	29 9/16	13.3	19.2	24.4	50.5	65	—	—	—	—	—	—	—	—	—		
31	—	—	—	—	—	66	—	—	—	—	—	—	—	—	—		
32	31 8/16	14.4	20.8	26.1	53.7	67	—	—	—	—	—	—	—	—	—		
33	—	—	—	—	—	68	—	—	—	—	—	—	—	—	—		
34	33 8/16	15.0	21.5	27.0	55.4	69	—	—	—	—	—	—	—	—	—		
35	—	—	—	—	—	70	—	—	—	—	—	—	—	—	—		
36	35 7/16	16.1	23.0	28.7	58.6	71	—	—	—	—	—	—	—	—	—		
37	—	—	—	—	—	72	—	—	—	—	—	—	—	—	—		
38	37 7/16	17.2	24.5	30.5	61.8	73	—	—	—	—	—	—	—	—	—		
39	—	—	—	—	—	74	—	—	—	—	—	—	—	—	—		
40	39 6/16	18.0	26.0	32.3	64.6	75	—	—	—	—	—	—	—	—	—		
41	—	—	—	—	—	76	—	—	—	—	—	—	—	—	—		
42	41 6/16	18.7	27.5	34.2	66.9	77	—	—	—	—	—	—	—	—	—		
43	—	—	—	—	—	78	—	—	—	—	—	—	—	—	—		
44	43 5/16	19.3	29.0	36.0	69.3	79	—	—	—	—	—	—	—	—	—		
45	—	—	—	—	—	80	—	—	—	—	—	—	—	—	—		
46	45 5/16	20.0	30.5	37.9	71.6	81	—	—	—	—	—	—	—	—	—		

Power Consumption

Tested at full power with PSD Series power supplies.

Standard Nominal Lengths offered provide minimal shadowing. For alternate lengths, please contact factory with specific request.

HE64

Nominal Length (in)	Actual Length	Watts	Nominal Length (in)	Actual Length	Watts	Nominal Length (in)	Actual Length	Watts
		SO			SO			SO
12	11 1/16	22.8	47	–	–	82	–	–
13	12 10/16	22.8	48	47 7/16	84.7	83	–	–
14	–	–	49	–	–	84	–	–
15	14 2/16	22.8	50	–	–	85	–	–
16	15 10/16	26.6	51	–	–	86	–	–
17	–	–	52	–	–	87	–	–
18	17 2/16	28.4	53	–	–	88	–	–
19	18 11/16	32.2	54	–	–	89	–	–
20	–	–	55	–	–	90	–	–
21	20 3/16	34.1	56	–	–	91	–	–
22	21 11/16	37.8	57	–	–	92	–	–
23	–	–	58	–	–	93	–	–
24	23 3/16	39.7	59	–	–	94	–	–
25	24 11/16	43.4	60	–	–	95	–	–
26	–	–	61	–	–	96	–	–
27	26 4/16	45.3	62	–	–			
28	27 12/16	49.1	63	–	–			
29	–	–	64	–	–			
30	29 4/16	50.9	65	–	–			
31	30 12/16	54.7	66	–	–			
32	–	–	67	–	–			
33	32 5/16	56.6	68	–	–			
34	33 13/16	60.3	69	–	–			
35	–	–	70	–	–			
36	35 5/16	62.2	71	–	–			
37	36 13/16	65.9	72	–	–			
38	–	–	73	–	–			
39	38 5/16	67.8	74	–	–			
40	39 14/16	71.6	75	–	–			
41	–	–	76	–	–			
42	41 6/16	73.4	77	–	–			
43	42 14/16	77.2	78	–	–			
44	–	–	79	–	–			
45	44 6/16	79.1	80	–	–			
46	45 15/16	82.8	81	–	–			