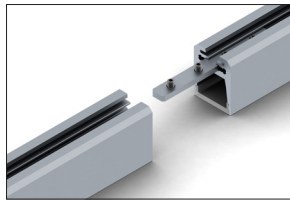
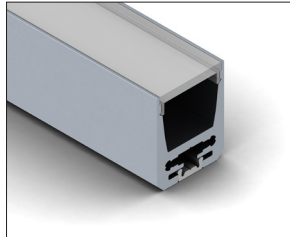
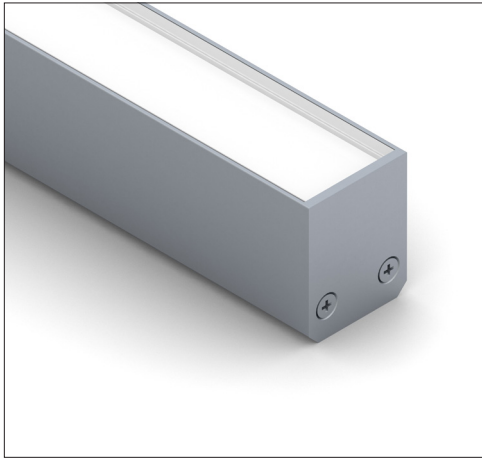
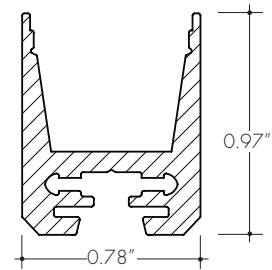


The ALS20 Channel is a linear aluminum extrusion that has been designed to fit many LED lighting needs. Multiple lens options allow for great flexibility and adaptability for any application. Extrusion and diffuser lenses are also field cuttable. Substantial aluminum mass in profile provides excellent heat sink for high power LEDs. Linear connector available for extending extrusion runs.



two ALS20 & a linear connector



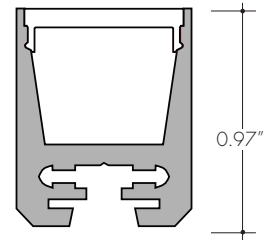
Technical information

Finish: Silver anodized

Diffuser lens: polycarbonate, snap-in-place, UV resistant

Mounting: mounting channel

| | 78 | 118 |
|-------------------|------------------|------------------|
| Actual length | 78.75" | 118.19" |
| Mounting brackets | minimum 3 | minimum 4 |
| Available lenses | clear frosted | clear frosted |



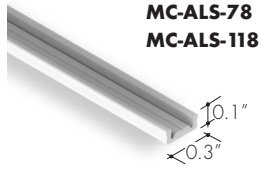
ALS20 with frosted/
clear lens

Ordering code

| MODEL | LENGTH | DIFFUSER | FINISH |
|----------------------------------|------------------------------|--------------------------|----------------------|
| ALS20 | 78 | C | SA |
| ALS20 - ALS20 aluminum extrusion | 78 - 78.75" 118 - 118.19" | C - Clear F - Frosted | SA - Silver anodized |

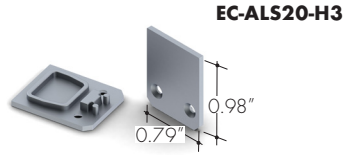
All accessories sold separately.

Mounting channel



linear plastic mounting channel

End-cap

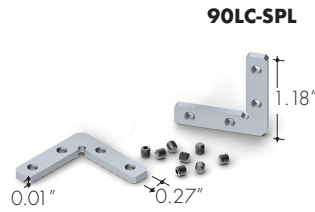


metal finish, end-cap

Connectors



Straight joiner



90 degree joiner

