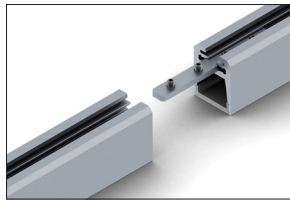
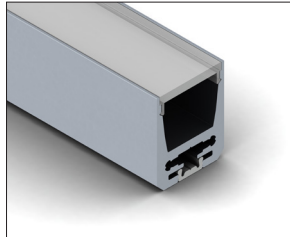
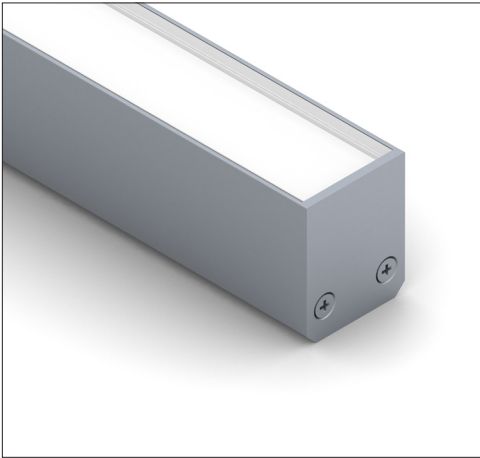
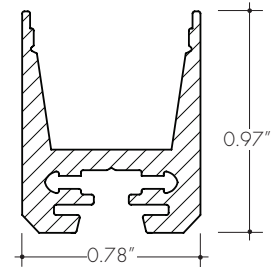


The ALS20 Channel is a linear aluminum extrusion that has been designed to fit many LED lighting needs. Multiple lens options allow for great flexibility and adaptability for any application. Extrusion and diffuser lenses are also field cuttable. Substantial aluminum mass in profile provides excellent heat sink for high power LEDs. Linear connector available for extending extrusion runs.



two ALS20 & a linear connector



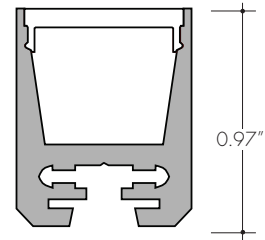
Technical information

Finish: Silver anodized

Diffuser lens: polycarbonate, snap-in-place, UV resistant

Mounting: mounting channel

	78	118
Actual length	78.75"	118.19"
Mounting brackets	minimum 3	minimum 4
Available lenses	clear frosted	clear frosted



ALS20 with frosted/
clear lens

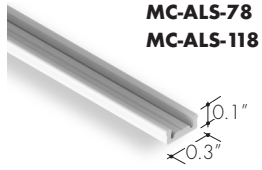
Ordering code

MODEL	LENGTH	DIFFUSER	FINISH
ALS20	78	C	SA
ALS20 - ALS20 aluminum extrusion	78 - 78.75" 118 - 118.19"	C - Clear F - Frosted	SA - Silver anodized

NOTE: For Channels and Lenses over 90", incremental shipping charges will apply

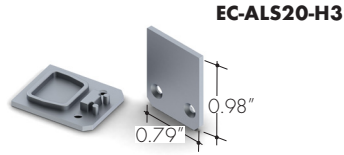
All accessories sold separately.

Mounting channel



linear plastic mounting channel

End-cap

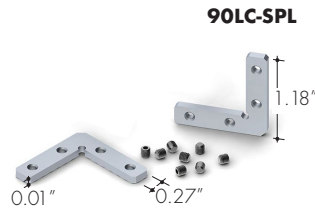


metal finish, end-cap

Connectors



Straight joiner



90 degree joiner

