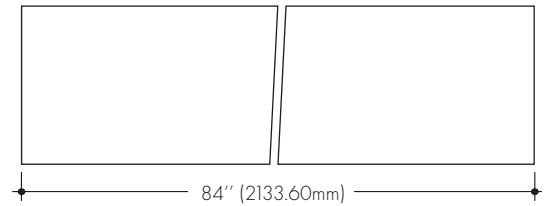
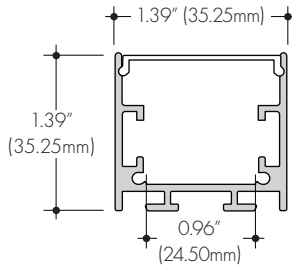
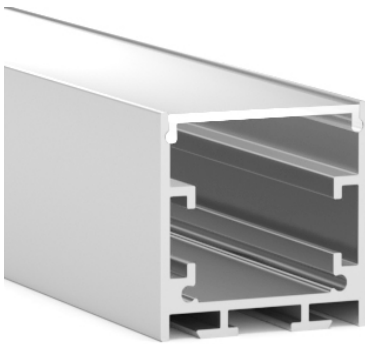


Wide and deep surface mounted or hanging channel. Eliminates visible LED nodes for most OAX products when used with a half frosted lens.



Technical information

Finish: Silver anodized  
 Diffuser lens: polycarbonate, snap-in-place, UV resistant  
 Mounting: Direct Surface, Mounting Clip (see page 2)

		Lens Options	
Actual length	84" (2133.60mm)		
	HF	Half Frosted	LN-14XXC-84-HF

Ordering code

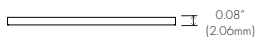
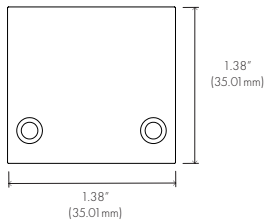
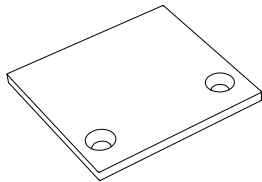


All accessories sold separately.

Accessories

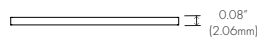
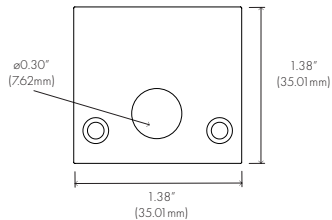
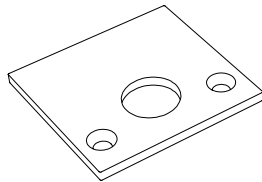
**EC-1414C-H0**

Anodized Aluminum  
End Cap



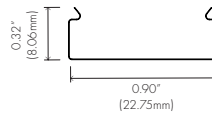
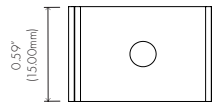
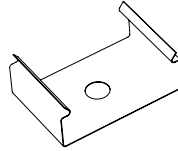
**EC-1414C-H1**

Anodized Aluminum  
End Cap w/Hole



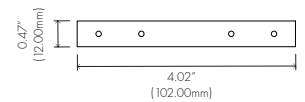
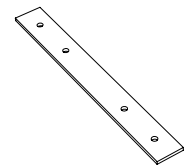
**MC-1414C**

Mounting Clip



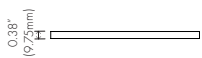
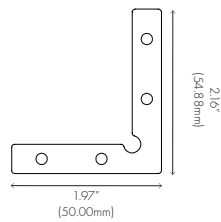
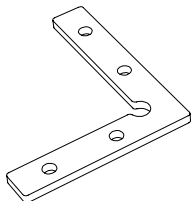
**ABSTR-14XX**

Bracket Straight



**AB90F-14XX**

Bracket 90° Flat



**AB90R-14XX**

Bracket 90° Raised

