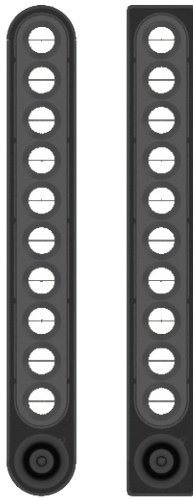


# Hero

# LightShift™ adjustable luminaire

Ceiling recessed



Hero adjustable luminaire with LightShift technology provides for beam adjustment with a joystick-actuated internal mechanism that does not move or reorient the luminaire body. Harmonious integration into the architecture and flexible installation into the tightest spaces. Fixed light emitting face orientation, precision optics, adaptive glare baffle, and advanced anti-reflective materials provide for exceedingly low glare. Available with a wide range of beam characteristics, shapes, colors, and mounting configurations.

## PERFORMANCE

Light Output	1260 (10 LED) and 750 (6 LED) lumens (3000K)				
Efficacy	58 lumens/watt (3000 K)				
Color Temperature	2700, 3000, 3500, 4000 K				
Color Rendering	92 CRI				
Name	VN	NS	SP	WS	VW
Beam: Width	11°	15°	23°	35°	45°
Field angle	20°	25°	38°	59°	69°

## ADJUSTMENT

Tilt	rated to ±40°
Pan	infinite (360° with no stops)

## ELECTRICAL

Operating Power	23 W (10 LED)
	120-277 V, 50-60 Hz, power factor > 0.9
Dimming	1% phase, 0-10 V, or DALI, 0.1% optional

## MECHANICAL

Mounting	Non-IC new construction, Non-IC panless flex install
Trim	trimless (mud-in), low-profile trim (rounded only)
Shape	rectangular or rounded
Height (in plenum)	3.4" nominal
Hanger Length	14" to 24" standard, 12" to 48" optional adjustable butterfly mounts available

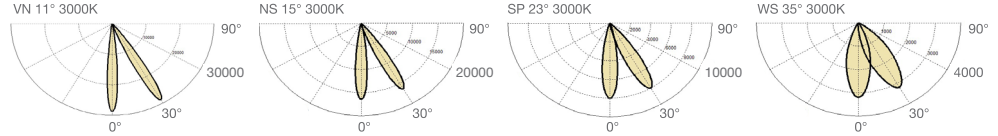


## PHOTOMETRICS

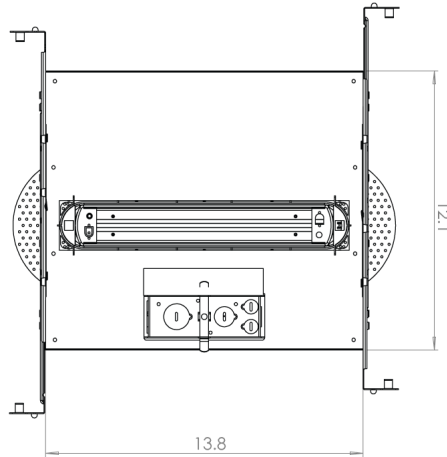
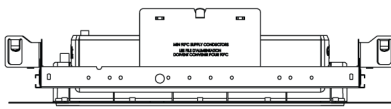
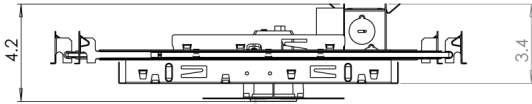
Illuminance measured for 3000K with beam direction at 0° and 30°. Cone size is marked at 50% of peak illuminance. Photometric files available for download at <https://www.glintlighting.com/resources>.

	2700K	3000K	3500K	4000K
Lumens	1200	1260	1307	1360
CRI Ra	92	96	95	94
CRI R9	65	79	81	74
TM30 Rf	89	94	94	92
TM30 Rg	103	101	102	99
11° CBCP	27319	28685	29755	30962
15° CBCP	15614	16395	17007	17696
21° CBCP	7640	8022	8321	8659
34° CBCP	3047	3200	3319	3454

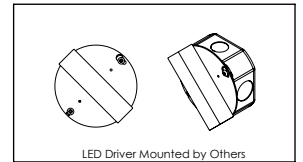
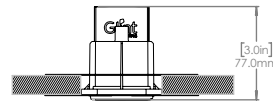
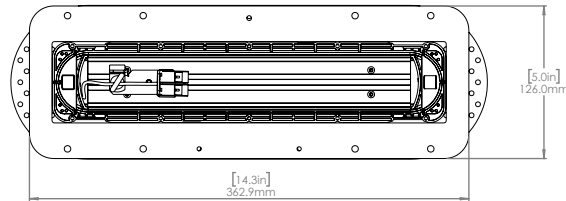
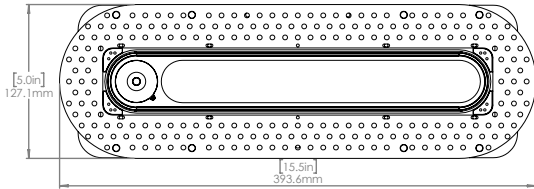
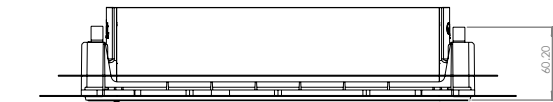
Scale 1.0x for 10 LED and 0.6x for 6 LED.



## DIMENSIONS - New Construction (NSR)



## DIMENSIONS - Flexible Installation (FLX)



## ORDERING INFORMATION

Please create order codes for your specification from the selections below. For custom requirements, please indicate X in the appropriate field and separately write out your request or contact us for a custom build or setup code.

MODEL	SIZE	SHAPE	TRIM COLOR	INSTALLATION	TRIM	VOLTAGE
A1015 Hero non-IC	10-1 10 LED	R rectangular P rounded	BLK black WHT white	NSR new construction FLX flexible installation	TLM trimless mud-in TRL low-profile trim (rounded only)	U12 120V U27 277V

DIMMING	CCT / CRI Ra	BEAM SIZE	LIGHT OUTPUT	CUSTOM BUILD	CUSTOM SETUP
E10 phase 1%	2790 2700K 92 CRI	VN 11°	SO standard	STK stock build	STD standard setup
T10 0-10V, 1%	3090 3000K 92 CRI	NS 15°	XO custom	BFB butterfly brackets	LIN linear dim curve
TX1 0-10V, 0.1%	3590 3500K 92 CRI	SP 23°		CBH 48" bar hangers	--- custom
D10 DALI-2, 1%	4090 4000K 92 CRI	WS 35°		XBL custom	
DX1 DALI-2, 0.1%	XCT custom	VW 45°			