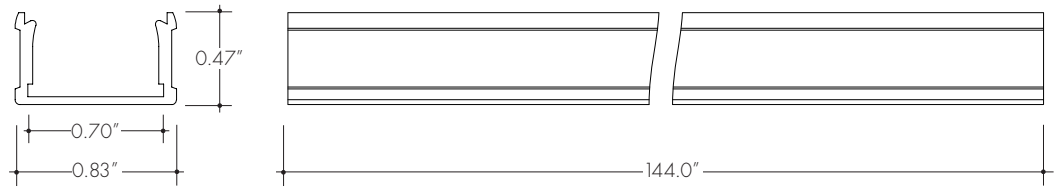
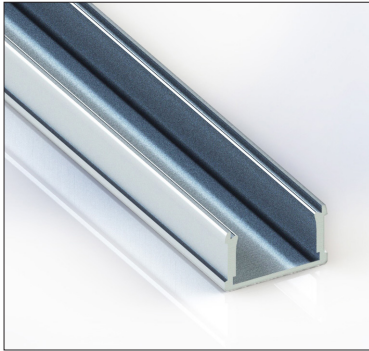


The KXL Channel linear aluminum extrusion has been designed to fit many LED lighting needs. Multiple mounting and lens options allow for great flexibility and adaptability for any application. Extrusion and diffuser lenses are also field cuttable. Substantial aluminum mass in profile provides excellent heat sink for high power LEDs. Mounting brackets and endcaps are available in multiple finishes and sold separately.

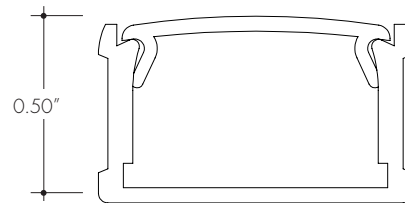


Technical information

Finish: Silver anodized, White

Diffuser lens: polycarbonate, snap-in-place, UV resistant

Mounting: multiple mounting brackets (page 2)



extrusion with lens

| Lens Options | |
|------------------|--|
| Actual length | 48", 72", 96", & 144" |
| Available lenses | - clear - frosted - half frosted |

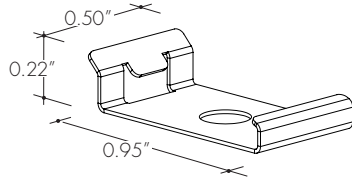
Ordering code

| MODEL | LENGTH | DIFFUSER | FINISH |
|--------------------|--|---|------------------------------------|
| KXLC | 48 | C | SA |
| KXLC - KXL Channel | 48 - 48" 72 - 72" 96 - 96" 144 - 144" | C - Clear F - Frosted HF - Half Frosted | SA - Silver anodized WH - White |

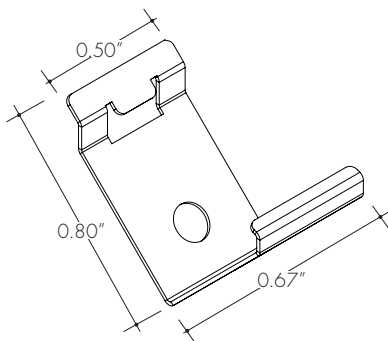
All accessories sold separately.

Mounting brackets

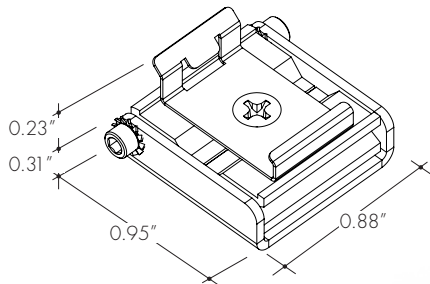
MB-KXLC-SS Stainless steel screw-in mounting bracket



MB-KXLC-45-SS Stainless steel screw-in 45° mounting bracket

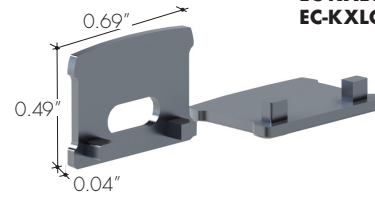


MB-KXLC-A-SA Silver anodized adjustable mounting bracket



End-caps

EC-KXLC-F-H4-SA Silver anodized w/powerfeed opening
EC-KXLC-F-H4-WH White w/powerfeed opening



EC-KXLC-F-H3-SA Silver anodized
EC-KXLC-F-H3-WH White

