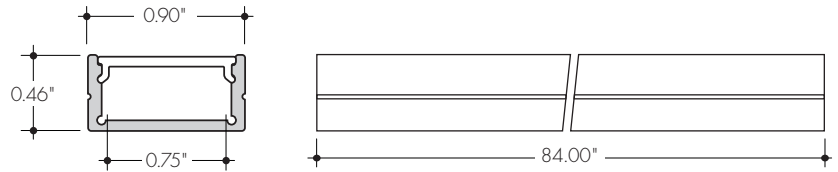


The FOTSC linear aluminum extrusion has been designed to fit FOT Flex and LineLED. Multiple mounting and lens options allow for great flexibility and adaptability for any application. Extrusion and diffuser lenses are also field cuttable. Substantial aluminum mass in profile provides excellent heat sink for high power LEDs. Mounting brackets and endcaps are sold separately.



Technical information

Finish: Silver anodized

Diffuser lens: Acrylic, snap-in-place, UV resistant

Mounting: Direct Surface, Mounting Clip, Rotating Clip, Flex Connect Housing (see page 2)

		Lens Options	
Actual length	84"		
Available lenses	C	Clear	
	HF	Half Frosted	
	F	Frosted	

Ordering code

MODEL	LENGTH	LENS	FINISH
FOTSC	84	C	SA
FOTSC - Short Channel	84 - 84"	C - Clear HF - Half Frosted F - Frosted NL - No Lens*	SA - Silver anodized

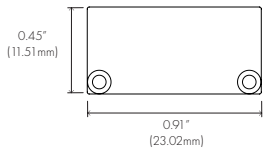
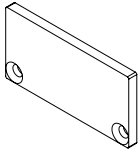
*Recommended when used with FOT Flex

Accessories

All accessories sold separately.

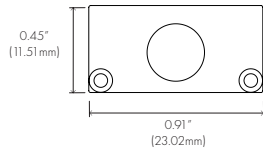
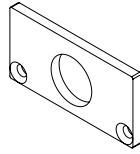
EC-FOTSC-H3-SA

Anodized Aluminum
End Cap



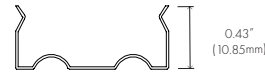
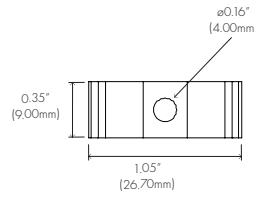
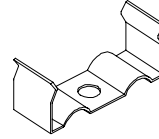
EC-FOTSC-H4-SA

Anodized Aluminum
End Cap w/Hole



MB-FOTSC-SS

Mounting Clip



MB-FOTSC-A-SS

Rotating Mounting Clip

