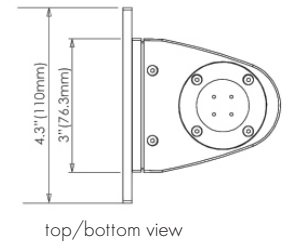
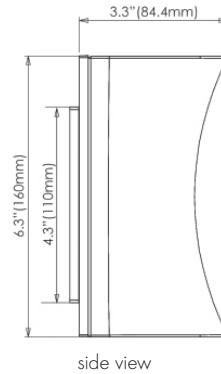
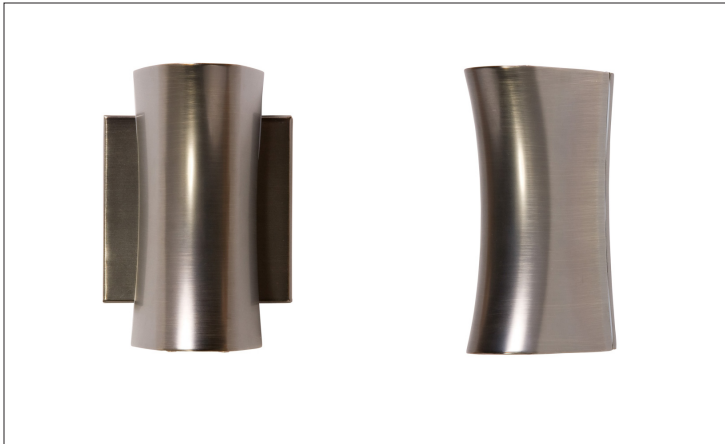


# Tulip | LED wall sconce



The Tulip sconce is an LED wall-mounted fixture suitable for indoor and outdoor applications. The Tulip is available in an up-and-downlight version (11 W) or just downlight version (5.5 W). The die-cast aluminum and tamper proof construction make for a durable and weather-proof fixture (IP65 rated). Bronze and Satin nickel plated finishes are not suitable for marine-grade/salt-water installation environments. Mounts to a horizontal single gang box or to a standard 4" inch box when installed with included canopy. ADA compliant.



## Finish options



Bronze plated



Satin nickel plated



Silver powder coated



White powder coated

## Technical information

**Light engine:** 5.5 W (downlight only) and 11 W (up and down light) LEDs with integral driver

**Light output:** 252.5 lum (5.5 W version) and 505 lum (11 W version)

**Efficiency:** 45 lum/W

**Color temperature:** 3000 K / 4000 K

**CRI:** 82

**Dimming:** With low voltage electronic dimmer (not available for 277 V input)

**Rating:** cETLus wet listed, IP65

## Ordering code

MODEL	WATTAGE	COLOR TEMPERATURE	BEAM SPREAD	FINISH	DIMMING	INPUT
TU	5	30K	NF	BZ	ND	
TU - Tulip	5 - 5.5 W 11 - 11.0 W	30K - 3000 K 40K - 4000 K	NF - 25° FL - 40°	BZ - Bronze SN - Satin nickel SL - Silver WH - White	ND - Non dimming D1 - Dimming	Blank - 110 V 277 - 277 V