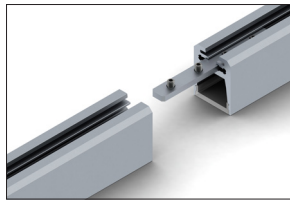
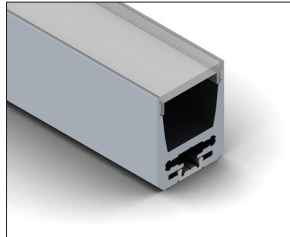
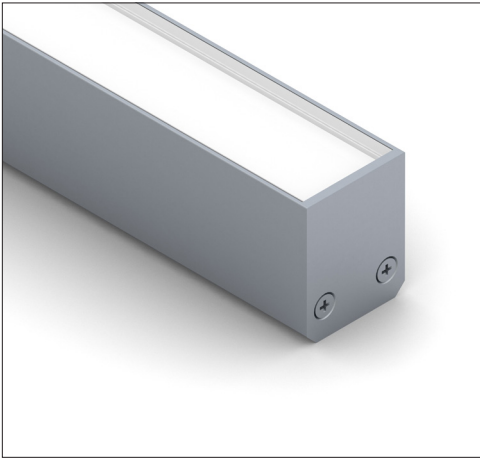
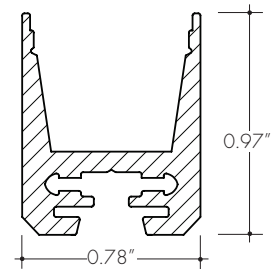


The ALS20 Channel is a linear aluminum extrusion that has been designed to fit many LED lighting needs. Multiple lens options allow for great flexibility and adaptability for any application. Extrusion and diffuser lenses are also field cuttable. Substantial aluminum mass in profile provides excellent heat sink for high power LEDs. Linear connector available for extending extrusion runs.



two ALS20 & a linear connector



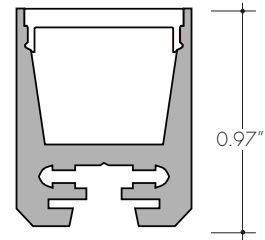
### Technical information

Finish: Silver anodized

Diffuser lens: polycarbonate, snap-in-place, UV resistant

Mounting: mounting channel

	<b>78</b>	<b>118</b>
Actual length	78.75"	118.19"
Mounting brackets	minimum 3	minimum 4
Available lenses	clear frosted	clear frosted



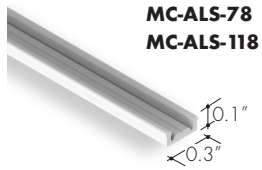
ALS20 with frosted/  
clear lens

### Ordering code

MODEL	LENGTH	DIFFUSER	FINISH
ALS20	78	C	SA
ALS20 - ALS20 aluminum extrusion	78 - 78.75" 118 - 118.19"	C - Clear F - Frosted	SA - Silver anodized

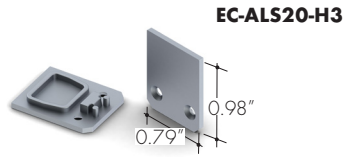
All accessories sold separately.

### Mounting channel



linear plastic mounting channel

### End-cap



metal finish, end-cap

### Connectors



Straight joiner



90 degree joiner

