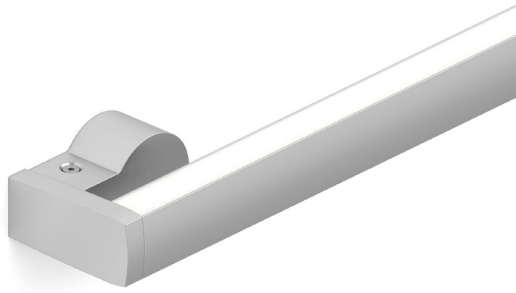
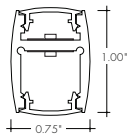


Features



- Extruded aluminum linear wall mount system providing both direct and indirect light.
- 24VDC Class 2 fixtures made to order up to 96".
- Suitable for wall mount applications
- Class 2 listed for damp locations
- Dot free even illumination with Frosted Lens
- Proprietary strong bond solder method handles up to 50 lbs of pull force on wire leads and connectors
- WD68 Warm Dim follows the incandescent dimming curve and is compatible with MLV, ELV, and Incandescent dimmers.
- 5 Year warranty



Finish Options (see page 2 for additional information)

- | | | |
|-----------------|-------------|---------------|
| Silver Anodized | White | Aged Brass |
| Black | Matte Black | Polished Gold |
| Bronze | Warm Nickel | Chrome |



Technical Information

| | |
|---|-------------------------|
| TYPE | Warm Dim |
| OUTPUT OPTIONS | WD68SO (19K-27K) |
| Lumens Output (all channels full on) <small>(with a Frosted Lens)</small> | 230 lm/ft |
| Average Power Consumption <small>(for a 4" section)</small> | 10.8 W/ft |
| Efficacy | 43 lm/W |
| Max Run Length <small>(in series)</small> | 20 ft |
| Max Ambient Temperature* | 50°C [122°F] |
| Control/Dimming Protocol | MLV, ELV, Inc. |

| Warm Dim (WD68) | | | | | |
|-----------------|-------|----------------|----------------|----------------|--|
| CCT | TM-30 | | | | |
| | CRI | R _f | R _g | R ₉ | |
| 1900K | 96 | 92 | 96 | 94 | |
| 2700K | 96 | 93 | 106 | 95 | |

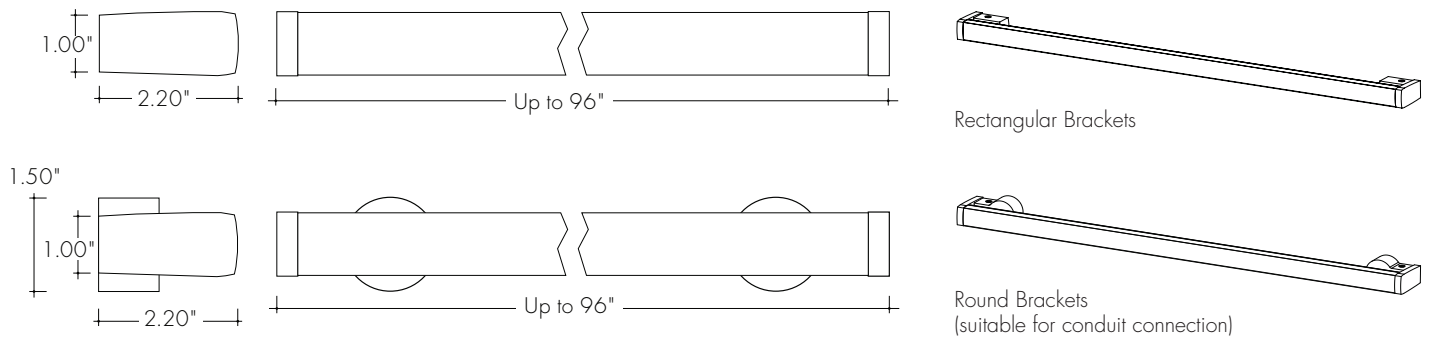
*Max Ambient Temperature to maintain L70 of 50k+ hours. Exceeding Max Ambient Temperature may result in decreased life/output. Consult Technical Support for specific inquiries.

Ordering Code

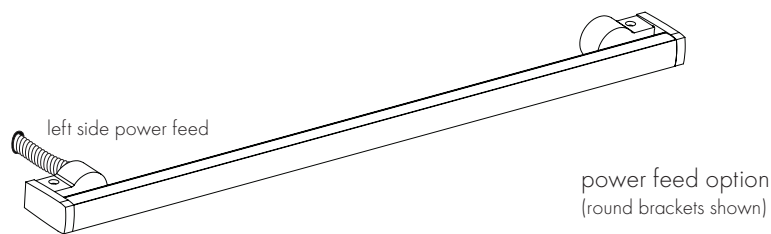
| MODEL | LENGTH ¹ | OUTPUT | CCT | LENS ² | MOUNTING | FINISH ² | POSITION TYPE |
|-------------------|----------------------------|-------------------|------------------------|-------------------|--|---|-----------------------------------|
| LUCW - Luceo Wall | 24" - 96" 3" increments | WD68SO - Standard | 19K27K - 1900K - 2700K | F - Frosted | RND - Round Brackets REC - Rectangle Brackets | SA - Silver Anodized BK - Black BZ - Bronze WH - White MB - Matte Black WN - Warm Nickel AB - Aged Brass PG - Polished Gold ³ CH - Chrome ³ | RR - Right Back LB - Left Back |

1 - Custom lengths and increments are available, please consult Inside Sales with specific request.
 2 - Non SA finishes may have extended lead times. Custom RALs are available, please consult Inside Sales with specific request.
 3 - Polished Gold finishes have a maximum fixture length of 48", and Chrome finishes have a maximum fixture length of 72".

Product Dimensions



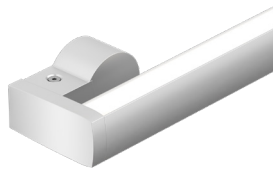
Power Feed Options



Finish Options

- Finish options are available in a wide variety, allowing for complete customization of style and aesthetic.
- Non Silver Anodized finishes may have extended lead times.
- Polished Gold finishes have a maximum fixture length of 48", and Chrome finishes have a maximum fixture length of 72".
- Custom RALs are available, please consult Inside Sales with specific request.

Silver Anodized



Silver Anodized is a soft silver with a clear finish.

Black



Black is a true deep black with a glossy finish.

Bronze



Bronze is a rich, dark brown with a satin finish.

White



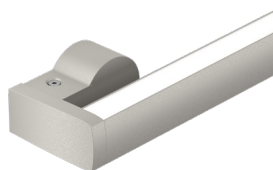
White is a polar bright white and field paintable.

Matte Black



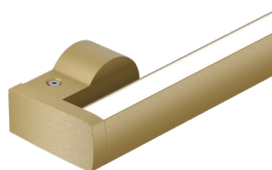
Matte Black is a dark, pitch-black with a soft flat finish.

Warm Nickel



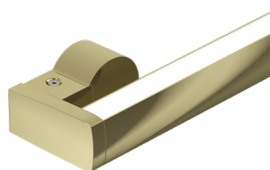
Warm Nickel is a soft, silvery smoke with warm tones and a satin finish.

Aged Brass



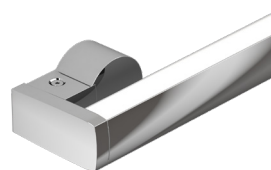
Aged Brass is a deep brown shade with slightly golden undertones.

Polished Gold




Polished Gold is bright and radiant for a brilliant finish.

Chrome



Chrome is a highly reflective silver polish.

Lens Option / Light Transmission

| Output Options | Lens/Accessory | |
|--------------------------------|----------------|--|
| | Frosted | |
| WD68SO - 27K | ND |  |
| WD68SO - 19K | ND | |
| Transmission Percentage | 100% | |

Power Consumption

Tested at Full Power with PDC Series power supplies.

Standard Nominal Lengths offered provide minimal shadowing. For alternate lengths, please Consult Inside Sales with specific request.

Warm Dim (WD68)

| Nominal Length (in) | Actual Length | Watts | Nominal Length (in) | Actual Length | Watts | Nominal Length (in) | Actual Length | Watts |
|---------------------|---------------|-------|---------------------|---------------|-------|---------------------|---------------|-------|
| | | SO | | | SO | | | SO |
| 12 | – | – | 47 | – | – | 82 | – | – |
| 13 | – | – | 48 | – | – | 83 | 82 12/16 | 69.5 |
| 14 | – | – | 49 | 48 5/16 | 42.1 | 84 | – | – |
| 15 | – | – | 50 | – | – | 85 | – | – |
| 16 | – | – | 51 | 50 12/16 | 44.0 | 86 | 85 3/16 | 71.4 |
| 17 | – | – | 52 | – | – | 87 | – | – |
| 18 | – | – | 53 | – | – | 88 | 87 11/16 | 73.4 |
| 19 | – | – | 54 | 53 4/16 | 45.9 | 89 | – | – |
| 20 | – | – | 55 | – | – | 90 | – | – |
| 21 | – | – | 56 | 55 11/16 | 48.1 | 91 | 90 2/16 | 75.3 |
| 22 | – | – | 57 | – | – | 92 | – | – |
| 23 | – | – | 58 | – | – | 93 | 92 9/16 | 77.2 |
| 24 | 23 11/16 | 20.3 | 59 | 58 2/16 | 50.3 | 94 | – | – |
| 25 | – | – | 60 | – | – | 95 | – | – |
| 26 | – | – | 61 | 60 10/16 | 52.2 | 96 | 95 1/16 | 79.1 |
| 27 | 26 2/16 | 22.5 | 62 | – | – | | | |
| 28 | – | – | 63 | – | – | | | |
| 29 | 28 10/16 | 24.7 | 64 | 63 1/16 | 54.1 | | | |
| 30 | – | – | 65 | – | – | | | |
| 31 | – | – | 66 | 65 8/16 | 56.1 | | | |
| 32 | 31 1/16 | 26.9 | 67 | – | – | | | |
| 33 | – | – | 68 | 68 | 58.0 | | | |
| 34 | 33 9/16 | 29.0 | 69 | – | – | | | |
| 35 | – | – | 70 | – | – | | | |
| 36 | 36 | 31.2 | 71 | 70 7/16 | 59.9 | | | |
| 37 | – | – | 72 | – | – | | | |
| 38 | – | – | 73 | 72 15/16 | 61.8 | | | |
| 39 | 38 7/16 | 33.4 | 74 | – | – | | | |
| 40 | – | – | 75 | – | – | | | |
| 41 | 40 15/16 | 35.6 | 76 | 75 6/16 | 64.0 | | | |
| 42 | – | – | 77 | – | – | | | |
| 43 | – | – | 78 | 77 13/16 | 66.1 | | | |
| 44 | 43 6/16 | 37.7 | 79 | – | – | | | |
| 45 | – | – | 80 | – | – | | | |
| 46 | 45 13/16 | 39.9 | 81 | 80 5/16 | 67.8 | | | |

Voltage Drop Calculator

The below chart assumes nominal voltage of 24 Volts and a Voltage Drop Allowance of 3% through the wire

| Wattage [W] | Wire Length From Power Supply to Start of Run [ft] | | | | | | |
|-------------|--|--------|--------|--------|--------|--------|--------|
| | 12 AWG | 14 AWG | 16 AWG | 18 AWG | 20 AWG | 22 AWG | 24 AWG |
| 5 | 1088.2 | 684.4 | 430.3 | 270.6 | 170.2 | 107.1 | 67.3 |
| 10 | 544.1 | 342.2 | 215.1 | 135.3 | 85.1 | 53.5 | 33.7 |
| 15 | 362.7 | 228.1 | 143.4 | 90.2 | 56.7 | 35.7 | 22.4 |
| 20 | 272.0 | 171.1 | 107.6 | 67.7 | 42.6 | 26.8 | 16.8 |
| 25 | 217.6 | 136.9 | 86.1 | 54.1 | 34.0 | 21.4 | 13.5 |
| 30 | 181.4 | 114.1 | 71.7 | 45.1 | 28.4 | 17.8 | 11.2 |
| 35 | 155.5 | 97.8 | 61.5 | 38.7 | 24.3 | 15.3 | 9.6 |
| 40 | 136.0 | 85.5 | 53.8 | 33.8 | 21.3 | 13.4 | 8.4 |
| 45 | 120.9 | 76.0 | 47.8 | 30.1 | 18.9 | 11.9 | 7.5 |
| 50 | 108.8 | 68.4 | 43.0 | 27.1 | 17.0 | 10.7 | 6.7 |
| 55 | 98.9 | 62.2 | 39.1 | 24.6 | 15.5 | 9.7 | 6.1 |
| 60 | 90.7 | 57.0 | 35.9 | 22.6 | 14.2 | 8.9 | 5.6 |
| 65 | 83.7 | 52.6 | 33.1 | 20.8 | 13.1 | 8.2 | 5.2 |
| 70 | 77.7 | 48.9 | 30.7 | 19.3 | 12.2 | 7.6 | 4.8 |
| 75 | 72.5 | 45.6 | 28.7 | 18.0 | 11.3 | 7.1 | 4.5 |
| 80 | 68.0 | 42.8 | 26.9 | 16.9 | 10.6 | 6.7 | 4.2 |
| 85 | 64.0 | 40.3 | 25.3 | 15.9 | 10.0 | 6.3 | 4.0 |
| 90 | 60.5 | 38.0 | 23.9 | 15.0 | 9.5 | 5.9 | 3.7 |
| 96 | 56.7 | 35.6 | 22.4 | 14.1 | 8.9 | 5.6 | 3.5 |

Power Supplies

See fixture and power supply instructions & spec sheet for wiring information. Dimming possible in select models - view Luminii website for list of compatible dimmers.

For use with Warm Dim, WD68

Triac, MLV, & ELV Compatible Dimmers

| MODEL | POWER | OUTPUT |
|---------------------------|---------------|-------------|
| PDC - (IP20) Power Supply | 96 - 96 Watts | 24 - 24 VDC |

| MODELS | 96W |
|--------|-------|
| Length | 8.25" |
| Width | 4.10" |
| Depth | 1.56" |

