

Features

Kurba Large Vertical is a UL676 Pool Rated light strip with a sleek, direct view profile. Suitable for submersion max 6 ft deep and capable of vertical/top bends up to 6" radius. Built with robust factory made power feeds or end caps using UL676 Pool Rated SJTW cabling, Kurba Large Vertical Pool Rated mounts to a specifically designed thick plastic channel.

Applications

Pools, Fountains, and Ponds

Environment

Submersible to max 6ft deep. Water must be <4% salt concentration, <2PPM chlorine, <0.3PPM ozone. Natural hot springs not permissible.

Operating Voltage

24VDC

Operating Temperature

-4°F to 113°F (-20°C to 45°C)

Average Life

50,000 hours

Dimming

Low voltage dimmer and class 2 dimming power supply required

Approvals

Class 2, UL676, Pool Rated

Warranty

3 years



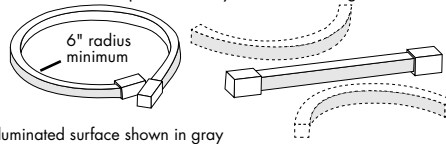
Technical Information

Model	KBL-SF-V-PL	CCT INFO / LUMEN MULTIPLIER	
		Color Temperature	Multiplier (ref. -3000K)
LEDs/ft	33	2200K	0.98
Light Output at 3000K	178 lm/ft	2400K	1.00
Average Power Consumption at 4'	3.7 W/ft	2700K	1.01
Ordering Increment	2.19"	3000K	1.00
Maximum Run Length (In Series)	25 ft	3500K	1.08
		4000K	1.04

Constraints

Bend Direction

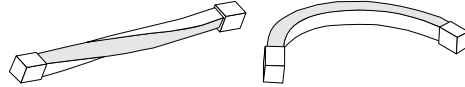
Bend LED in these positions only to avoid damage



Illuminated surface shown in gray

Prohibited Bends

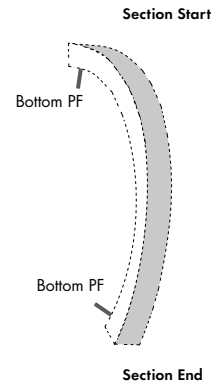
Twisting or bending LED in these positions will cause damage



Illuminated surface shown in gray

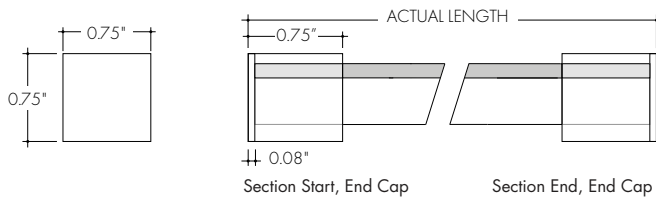
Do not make sharp bends near the endcap

Power Feed Locations

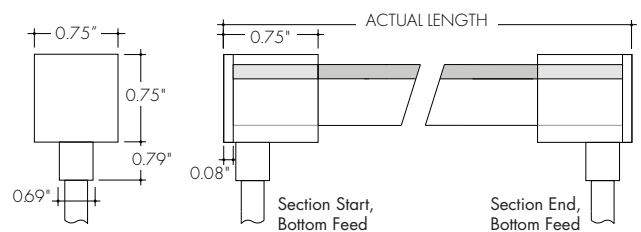


Section Start/End Power Feed Options

SJTW Cable Injection Molded End Cap (SEC)



SJTW Cable Injection Molded Bottom Feed (SBPF)



Ordering Code

MODEL	CCT	SECTION START	SECTION END	ACTUAL LENGTH
KBL-SF-V-PL - Kurba Large, Flat, Vertical/Top Bend, Pool Rated	22K-2200K 24K-2400K 27K-2700K 30K-3000K 35K-3500K 40K-4000K	SBPF - Pool Rated Black SJTW Cable Injection Molded Bottom Feed (30' wire lead) ¹ SEC - Pool Rated Black SJTW Cable Injection Molded End Cap ¹	SBPF - Pool Rated Black SJTW Cable Injection Molded Bottom Feed (30' wire lead) ¹ SEC - Pool Rated Black SJTW Cable Injection Molded End Cap ¹	See Power Consumption table on page 3 for available lengths

1 - 6-8 weeks lead time. Kurba injected-molded orders are non-cancellable.

Mounting Accessories

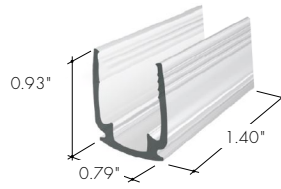
MC-NFP-KBL-78

Thickened Plastic Mounting Channel for underwater application, 78"



MB-NFP-KBL-ST

Thickened Plastic Mounting Channel for underwater application, 1.4"

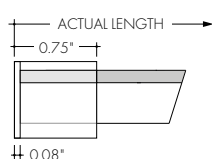


Power Consumption Per Fixture Length

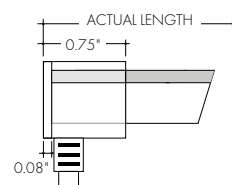
Based on operation with PDCU series of power supplies. Use Actual Length for Order Code Entry
 Tolerance for Actual Lengths less than 6 ft is +/- 0.2", Actual Lengths between 6 ft and 16 ft is +/- 0.3", and Actual Lengths greater than 16 ft is +/- 0.6"

Nominal Length (in)	Actual Length (in)				Actual Length (in)				Actual Length (in)				Actual Length (in)			
	W	SBPF	SEC	Nominal Length (in)	W	SBPF	SEC	Nominal Length (in)	W	SBPF	SEC	Nominal Length (in)	W	SBPF	SEC	Nominal Length (in)
2	-	-	-	79	24.1	78.9	78.9	(13 ft) 155	47.4	155.5	155.5	232	70.7	232	232	
5	-	-	-	81	24.7	81.1	81.1	158	48.1	157.7	157.7	234	71.4	234.2	234.2	
7	2	6.7	6.7	(7 ft) 83	25.4	83.3	83.3	160	48.7	159.8	159.8	236	72.1	236.4	236.4	
9	2.7	8.9	8.9	85	26.1	85.5	85.5	162	49.4	162	162	239	72.7	238.6	238.6	
(1 ft) 11	3.4	11.1	11.1	88	26.7	87.7	87.7	164	50.1	164.2	164.2	(20 ft) 241	73.4	240.8	240.8	
13	4.1	13.3	13.3	90	27.4	89.8	89.8	166	50.7	166.4	166.4	243	74.1	243	243	
15	4.7	15.5	15.5	92	28.1	92	92	(14 ft) 169	51.4	168.6	168.6	245	74.7	245.1	245.1	
18	5.4	17.7	17.7	94	28.7	94.2	94.2	171	52.1	170.8	170.8	247	75.4	247.3	247.3	
20	6.1	19.8	19.8	(8 ft) 96	29.4	96.4	96.4	173	52.7	173	173	250	76.1	249.5	249.5	
22	6.7	22	22	99	30.1	98.6	98.6	175	53.4	175.2	175.2	(21 ft) 252	76.7	251.7	251.7	
(2 ft) 24	7.4	24.2	24.2	101	30.7	100.8	100.8	177	54.1	177.3	177.3	254	77.4	253.9	253.9	
26	8.1	26.4	26.4	103	31.4	103	103	(15 ft) 180	54.7	179.5	179.5	256	78.1	256.1	256.1	
29	8.7	28.6	28.6	105	32.1	105.2	105.2	182	55.4	181.7	181.7	258	78.7	258.3	258.3	
31	9.4	30.8	30.8	(9 ft) 107	32.7	107.3	107.3	184	56.1	183.9	183.9	260	79.4	260.5	260.5	
33	10.1	33	33	110	33.4	109.5	109.5	186	56.7	186.1	186.1	263	80.1	262.6	262.6	
(3 ft) 35	10.7	35.2	35.2	112	34.1	111.7	111.7	188	57.4	188.3	188.3	(22 ft) 265	80.7	264.8	264.8	
37	11.4	37.3	37.3	114	34.7	113.9	113.9	190	58.1	190.5	190.5	267	81.4	267	267	
40	12.1	39.5	39.5	116	35.4	116.1	116.1	(16 ft) 193	58.7	192.7	192.7	269	82.1	269.2	269.2	
42	12.7	41.7	41.7	118	36.1	118.3	118.3	195	59.4	194.8	194.8	271	82.7	271.4	271.4	
44	13.4	43.9	43.9	(10 ft) 120	36.7	120.5	120.5	197	60.1	197	197	274	83.4	273.6	273.6	
46	14.1	46.1	46.1	123	37.4	122.7	122.7	199	60.7	199.2	199.2	(23 ft) 276	84.1	275.8	275.8	
(4 ft) 48	14.7	48.3	48.3	125	38.1	124.8	124.8	201	61.4	201.4	201.4	278	84.7	278	278	
50	15.4	50.5	50.5	127	38.7	127	127	(17 ft) 204	62.1	203.6	203.6	280	85.4	280.1	280.1	
53	16.1	52.7	52.7	129	39.4	129.2	129.2	206	62.7	205.8	205.8	282	86.1	282.3	282.3	
55	16.7	54.8	54.8	(11 ft) 131	40.1	131.4	131.4	208	63.4	208	208	285	86.7	284.5	284.5	
57	17.4	57	57	134	40.7	133.6	133.6	210	64.1	210.2	210.2	287	87.4	286.7	286.7	
(5 ft) 59	18.1	59.2	59.2	136	41.4	135.8	135.8	212	64.7	212.3	212.3	(24 ft) 289	88.1	288.9	288.9	
61	18.7	61.4	61.4	138	42.1	138	138	215	65.4	214.5	214.5	291	88.7	291.1	291.1	
64	19.4	63.6	63.6	140	42.7	140.2	140.2	(18 ft) 217	66.1	216.7	216.7	293	89.4	293.3	293.3	
66	20.1	65.8	65.8	142	43.4	142.3	142.3	219	66.7	218.9	218.9	295	90.1	295.5	295.5	
68	20.7	68	68	(12 ft) 145	44.1	144.5	144.5	221	67.4	221.1	221.1	298	90.7	297.6	297.6	
70	21.4	70.2	70.2	147	44.7	146.7	146.7	223	68.1	223.3	223.3	(25 ft) 300	91.4	299.8	299.8	
(6 ft) 72	22.1	72.3	72.3	149	45.4	148.9	148.9	225	68.7	225.5	225.5					
75	22.7	74.5	74.5	151	46.1	151.1	151.1	(19 ft) 228	69.4	227.6	227.6					
77	23.4	76.7	76.7	153	46.7	153.3	153.3	230	70.1	229.8	229.8					

SJTW Cable Injection Molded End Cap (SEC)



SJTW Cable Injection Molded Bottom Feed (SBPF)



Power Supplies

See Power Supply instructions and spec sheet for wiring information. For a complete list of compatible dimmers, see Compatible Dimming Chart on the Resources page.

Universal Power Supply 1% 120VAC - 277VAC

MODEL	INPUT CONTROL	ENVIRONMENT	POWER	OUTPUT
PS - Pool & Spa Rated Power Supply	UNI - 0-10V, Phase Dimming	PR - Pool Rated	96 - 96 W	24 - 24 VDC

0-10V dims down to 1%, MLV/ELV/TRIAC dims down to 1%.
 For a complete list of compatible dimmers, see [Compatible Dimming Chart](#) on the Resources page.

MODELS	PS-UNI-PR-96-24
Length	8.71"
Width	4.56"
Depth	1.86"

