

Features

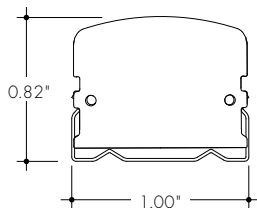
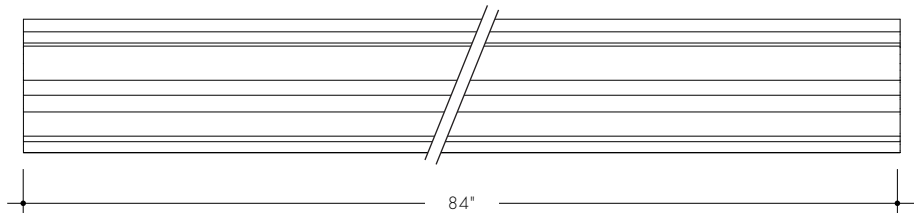
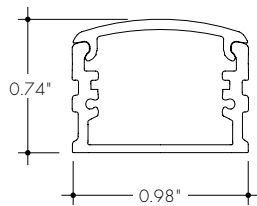
Basics Contractor-Grade x-large extrusions compatible with Basics LED strips.

Finish
Silver anodized

Mounting
Fixed clip mounting option for quick installation

Diffuser Lens
Acrylic, snap-in-place, UV resistant

Product Dimensions



BXC with Fixed Clip

INCLUDED MOUNTING ACCESSORIES

| EXTRUSION LENGTH | MOUNTING HARDWARE | END CAP (PAIR) |
|------------------|-------------------|----------------|
| 84" | 6 | 1 |

Each pair of endcaps includes 1x H0 (no wire feed hole) and 1x H1 (with hole) where applicable. Additional endcaps and mounting clips are available for purchase.

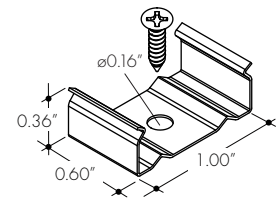
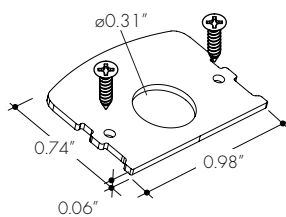
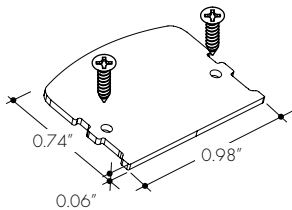
Accessories

All Channels come with a specified set of Mounting Clips and End Caps, see Ordering Code for details. Order additional Mounting Clips and End Caps as necessary.

EC-BXC-H0-SA
Silver Anodized End Cap

EC-BXC-H1-SA
Silver Anodized End Cap with powerfeed opening

MB-BXC-SS
Fixed Clip
-FC



Ordering code

| MODEL | LENGTH | LENS | MOUNTING ² | FINISH |
|---|----------|-------------|-----------------------|----------------------|
| BXC - Basics X-Large Channel ¹ | 84 - 84" | F - Frosted | FC - Fixed Clip | SA - Silver Anodized |

¹ - End Caps are included with channel, one of H0 (no hole) and one of H1 (with hole). Order additional End Caps as necessary.

² - Mounting Clips are included with channel. Refer to chart above for provided mounting clip quantities. Order additional Mounting Clips as necessary.