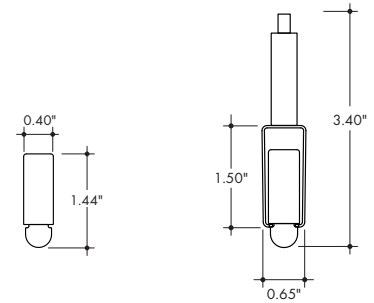


# Plexineon Rings Suspended Mount

RGB, RGBW and RGBW Pixel



- Easy to install, for interior accent lighting
- Neon look providing a crisp, clear line of light visible for miles
- Mounting Clips and aircraft cable are included in the appropriate quantities
- Operating Temperature: -40° F to 140° F (-40° C to 60° C)
- 24VDC Class 2
- IK10 and 3G rated
- IP67 rated. IP68 rating available upon specific request
- 5 year warranty indoor, 3 year warranty outdoor



Without Mounting Clip

With Mounting Clip and A/C hardware



## Technical Information

| RING OUTER DIAMETER* (inch) |                   | Plexineon RGB | Plexineon RGBW | Plexineon Pixel RGBW |
|-----------------------------|-------------------|---------------|----------------|----------------------|
| <b>EFFICACY</b>             |                   | 17.5 lm/W     | 17.1 lm/W      | 14.7 lm/W            |
| Ø36 (Ø3ft)                  | Lumen Output      | 679 lm        | 792 lm         | 792 lm               |
|                             | Power Consumption | 38.6 W        | 46.2 W         | 53.7 W               |
| Ø72 (Ø6ft)                  | Lumen Output      | 1357 lm       | 1583 lm        | 1583 lm              |
|                             | Power Consumption | 77.2 W        | 92.3 W         | 107.4 W              |
| Ø144 (Ø12ft)                | Lumen Output      | 2714 lm       | 3166 lm        | 3166 lm              |
|                             | Power Consumption | 154.6 W       | 184.7 W        | 214.9 W              |
| Ø288 (Ø24)                  | Lumen Output      | 5429 lm       | 6333 lm        | 6333 lm              |
|                             | Power Consumption | 309.1 W       | 369.5 W        | 429.8 W              |

| RGBW (3000K) |     |                |                |                |
|--------------|-----|----------------|----------------|----------------|
| Model        | CRI | TM-30          |                |                |
|              |     | R <sub>f</sub> | R <sub>g</sub> | R <sub>g</sub> |
| RGBW         | 85  | 84             | 98             | 22             |
| RGBW-PXSPI   | 85  | 84             | 98             | 22             |

| Dominant Wavelength |       |
|---------------------|-------|
| Color               | RGB   |
| Red                 | 622nm |
| Green               | 525nm |
| Blue                | 468nm |

All channels full on.

\*Rings will be made of equal sections no longer than 96" arc length. Rings exceeding 96W will have allowances for additional power feeds.

## Ordering Code

| MODEL          | RING DIAMETER <sup>1</sup>                     | RING TYPE            | CCT   | OUTPUT        | LENS        | MOUNTING <sup>2</sup>  | FINISH   | POWERFEED POSITION/TYPE  |
|----------------|--|----------------------|---|---------------|-------------|--|--|--|
| PX - Plexineon | ____ - Ring diameter in inches, 6"-288" (24ft) | HR - Horizontal Ring | RGB - RGB<br>RGBW - RGBW (3000K)<br>RGBW-PXSPI - RGBW Pixel Control (3000K) | SO - Standard | F - Frosted | SP - Suspension Mount, Standard Clips<br>SPD - Suspension Mount, Decorative Clips <sup>3</sup> | GG - Gloss Grey<br>BK - Matte Black<br>GY - Matte Grey<br>WH - Matte White | B-4 - Male Quick Connect One End, Female Quick Connect Other End |

1. Rings will be made of equal sections no longer than 96" arc length. Tolerance on size of diameter is +/- 1".  
 2. 2 mounting clips included for every 12" of diameter, with a minimum of 3 clips.  
 3. Decorative Clips match the fixture finish.

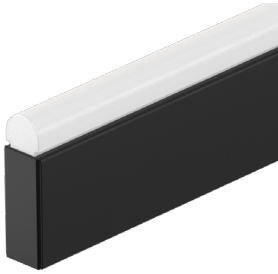
# Plexineon Rings Suspended Mount

RGB, RGBW and RGBW Pixel



## Finish Options

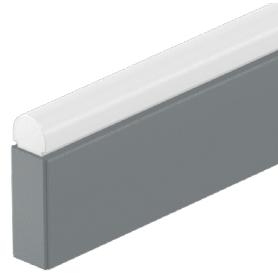
**BK**  
Matte Black Finish



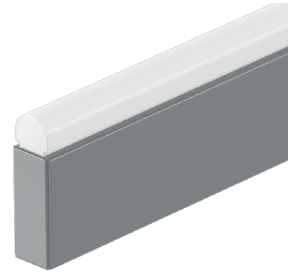
**WH**  
Matte White Finish



**GY**  
Matte Grey Finish



**GG**  
Gloss Grey Finish

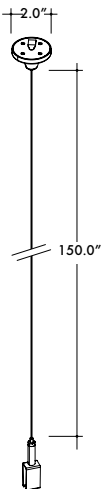


## Suspension Hardware

- Suspension Hardware is included with Plexineon runs in the appropriate quantity, every 30" of linear/arc length
- Standard Clips have a stainless steel finish, Decorative Clip finishes match the fixture finishes
- Canopy Finishes come in White.

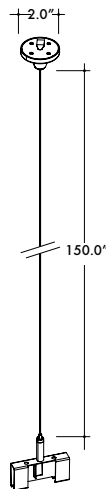
### SP/SPD

**SC-1MP2-SCL**  
Suspension Kit with Single Clip,  
Ø2.0" canopy, 150" A/C Cable



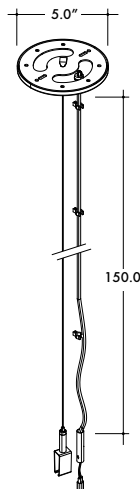
Used approximately every 30" of linear/arc length for Standard Clips and every 18" of linear/arc length for Decorative Clips

**SC-1MP2-DCL**  
Suspension Kit with Joiner Clip,  
Ø2.0" canopy, 150" A/C Cable



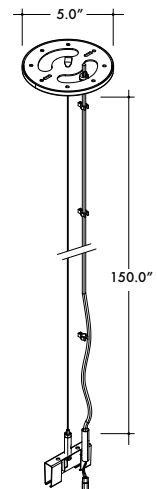
Use to join two fixtures together in the middle of a Suspended Run

**SC-1FC5-SCL**  
Powerfeed Canopy Suspension Kit with  
Single Clip, Ø5.0" canopy, 150" A/C Cable



Used at the start of every Suspended Run

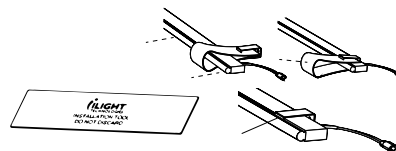
**SC-1FC5-DCL**  
Powerfeed Canopy Suspension Kit with Joiner  
Clip, Ø5.0" canopy, 150" A/C Cable



Used to join two fixtures together and to drop power in the middle of a Suspended Run

| OX | Clip Finish                          | Canopy Finish                  |
|----|--------------------------------------|--------------------------------|
| 00 | Stainless Steel                      | <input type="checkbox"/> White |
| 01 | Matte Black                          | <input type="checkbox"/> White |
| 02 | Matte Grey                           | <input type="checkbox"/> White |
| 03 | <input type="checkbox"/> Matte White | <input type="checkbox"/> White |

**70-TOL02-001-01**  
Mounting Clip Installation Tool



Use for installation of Plexineon into Mounting Clips

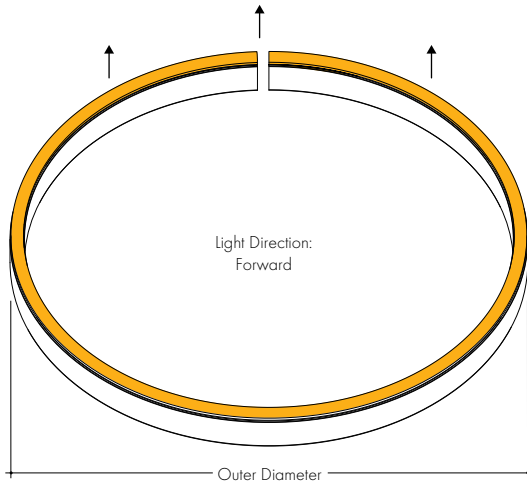
# Plexineon Rings Suspended Mount

RGB, RGBW and RGBW Pixel



## Ring Types

**HR**  
Horizontal Ring

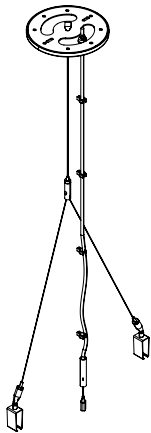


## Additional Material

- Ordered separately.

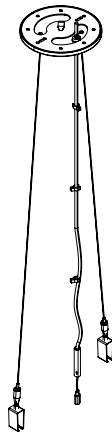
**CC-2MF-190-SCL**

Powerfeed Canopy Suspension Kit with Cross Cable and 2 Single Clips Ø5.0" canopy 150" A/C Cable



**CC-2MF-150-SCL**

Powerfeed Canopy Suspension Kit with 2 Cables and Single Clips Ø5.0" canopy 150" A/C Cable



**SC-2FC5-DCL**

Dual Powerfeed Canopy Standard or Decorative Joiner Clips 150" A/C Cable



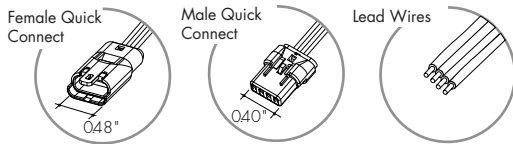
# Plexineon Rings Suspended Mount

RGB, RGBW and RGBW Pixel



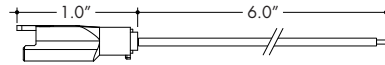
## Powerfeed and Connectors

### For use with RGB



#### 60-H-C4-0001-01

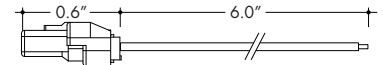
Female RGB Quick Connect with 6" flying leads



Female Quick Connect with flying leads can be connected to the Power Supply at the start of a run. Can also be used with the Male Quick Connect to make wire jumpers.

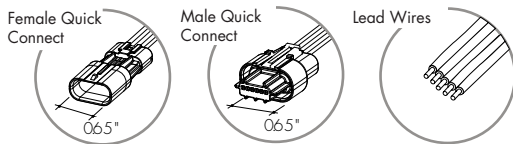
#### 60-H-C4-0002-01

Male RGB Quick Connect with 6" flying leads



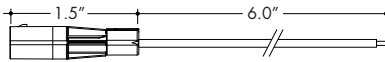
Male Quick Connect with flying leads can be used to make wire jumpers.

### For use with RGBW



#### 60-H-C5-0001-01

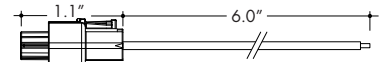
Female RGBW Quick Connect with 6" flying leads



Female Quick Connect with flying leads can be connected to the Power Supply at the start of a run. Can also be used with the Male Quick Connect to make wire jumpers.

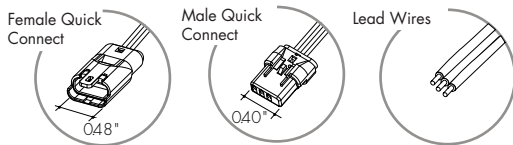
#### 60-H-C5-0002-01

Male RGBW Quick Connect with 6" flying leads



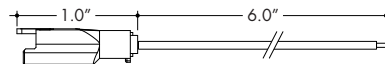
Male Quick Connect with flying leads can be used to make wire jumpers.

### For use with Pixel



#### 60-H-C3-0001-01

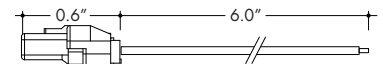
Female Pixel Quick Connect with 6" flying leads



Female Quick Connect with flying leads can be connected to the Power Supply at the start of a run. Can also be used with the Male Quick Connect to make wire jumpers.

#### 60-H-C3-0002-01

Male Pixel Quick Connect with 6" flying leads



Male Quick Connect with flying leads can be used to make wire jumpers.

Also available with longer Flying Leads

#### 60-H-C3-0005-01

Female Pixel Quick Connect with 384" flying leads

Also available with longer Flying Leads

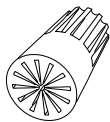
#### 60-H-C3-0006-01

Male Pixel Quick Connect with 384" flying leads

## Additional Material

### 60-12-22AWGSBWN

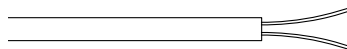
Weatherproof Wire Nut  
Silicone Filled



Order 2 per Power Supply.

### 55-STW02-050-00

50 ft of 14 gauge wire Black jacket,  
2 conductors



Sunlight, moisture resistant, and flame retardant PVC jacket per UL 1277

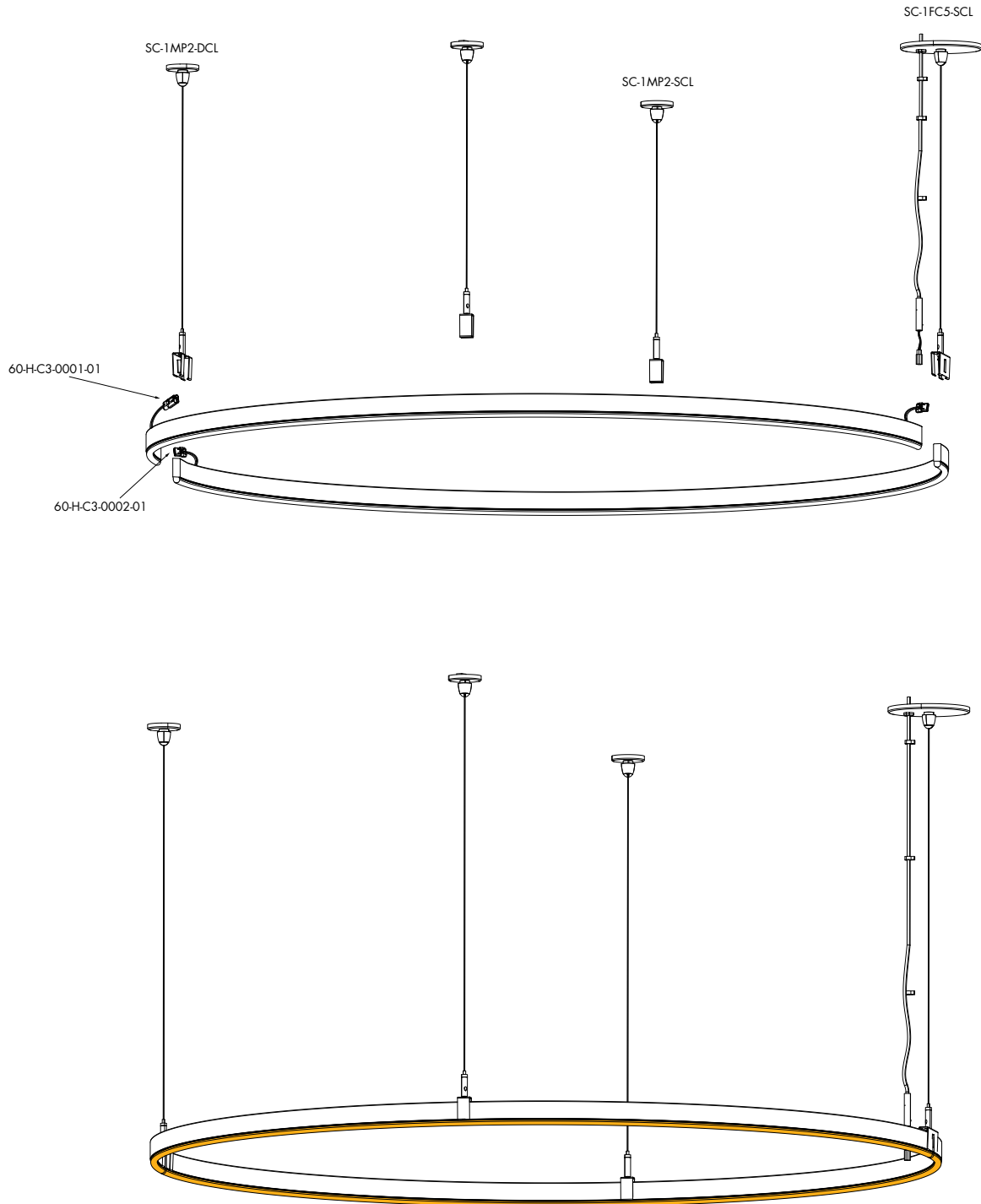
# Plexineon Rings Suspended Mount

RGB, RGBW and RGBW Pixel



## Sample Layout

**PX-48-HR-RGBW-PXSPI-SO-F-SP-GG-B-PFC**  
Plexineon Horizontal Ring, Suspended Mounting Clips



# Plexineon Rings Suspended Mount

RGB, RGBW and RGBW Pixel

## Power Supplies

See fixture and power supply instructions & spec sheet for wiring information. Dimming possible in select models - view luminii website for list of compatible dimmers.

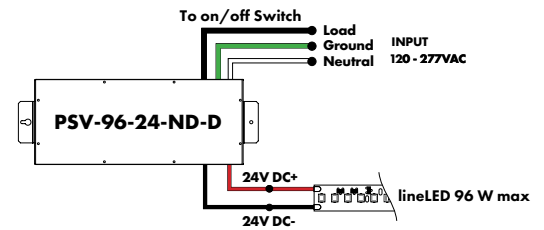
### For use with RGB/RGBW/Pixel

#### Non-Dimming Power Supply 120VAC - 277VAC

| MODEL          | POWER      | OUTPUT    | DIMMING        | LOCATION       |
|----------------|------------|-----------|----------------|----------------|
| PSV-PSV Series | 96-96 Watt | 24-24 VDC | ND-Non Dimming | D-Dry location |

Requires a controller and a decoder to work properly

| MODELS | 96W   |
|--------|-------|
| Length | 8.25" |
| Width  | 4.10" |
| Depth  | 1.56" |



### For use with RGB/RGBW

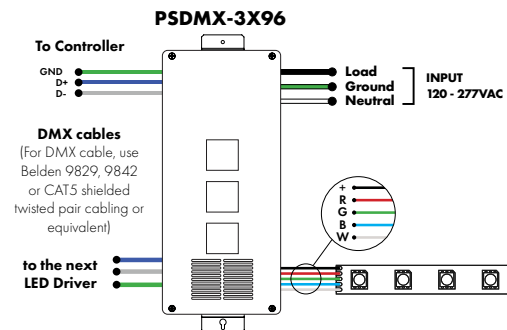
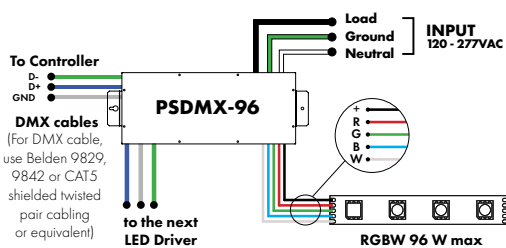
#### DMX 0% Dimming Power Supplies 120VAC - 277VAC

| MODEL                                  | POWER                              | OUTPUT    |
|--|------------------------------------|-----------|
| PSDMX-DMX Power Supply dims down to 0% | 96 - 96 Watt<br>3X96 - 3 X 96 Watt | 24-24 VDC |

Features eldoLED's LINEARdrive configurable dimmable drivers.

DDMX-RGBW DMX Decoder not required when purchasing this power supply.

| MODELS | 96W    | 3X96   |
|--------|--------|--------|
| Length | 14.40" | 15.75" |
| Width  | 5.20"  | 6.62"  |
| Depth  | 2.60"  | 4.95"  |



# Plexineon Rings Suspended Mount

RGB, RGBW and RGBW Pixel



## DMX-1Z-RGBW, DMX-3Z-RGBW

RGBW LED 1 or 3 Zone Controller



ORDERING CODE

| MODEL                | ZONES                            | COLOR                            |
|----------------------|----------------------------------|----------------------------------|
| DMX - DMX Controller | 3Z - Three Zone<br>1Z - One Zone | RGBW - Red, Green, Blue, & White |

DMX /Wireless RGB-W wall-mount controller controls DMX lighting fixtures, wireless control of RGB-W lighting fixture or use both simultaneously. Fits in any standard US switch box. Includes all the outputs in the back of the controller.

Control brightness levels with a single touch, personalize and memorize 3 different scenes, and even create 3 variations of white.

### Features

- 2 in 1 in-Wall Controller: DMX Control or Wireless RGB-W
- 65,000 Color Options, Dimming and Speed Control
- Memory Function
- 50 Foot Wireless Range
- Easily Fits Standard US Switch Boxes
- Touch Sensitive Glass Surface
- Includes 10 Built in Programs, or Create and Play Your Own

### Operating Voltage

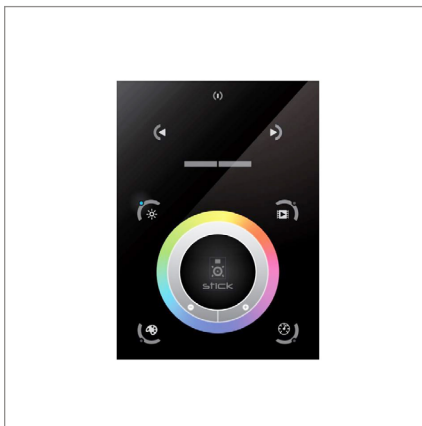
12 - 24V DC

### Color Parameters

- Brightness
- Saturation
- Primary colors
- Fading
- Color changing speed

## Touch DMX Controller

Touchscreen digital LED controller



ORDERING CODE

| MODEL   |
|---------|
| TSDMX-E |

TSDMX-E - Touchscreen DMX controller

Programmable advanced DMX512 lighting controller featuring a touch-screen interface. Operates as stand alone controller or integrated with most architectural lighting control systems. Can controller endless DMX512 enabled devices.

Mounts to standard single or dual gang wall box with the included power supply inside the junction box. Terminal block design for power and data connections.

### Features

- Sleek glass design which sits 0.43" from the wall
- Graphical color display to show selected environment
- Color/dimmer/speed palette
- Color temperature mixing
- Touch sensitive buttons. No mechanical parts
- Touch sensitive wheel allows for accurate color selection
- Multi-zone microSD memory
- Multi-room control with 500 scenes, 10 zones
- 1024 DMX channels. Control 340 RGB fixtures
- USB & Ethernet connectivity for programming and control

### Power Supply

7 VDC (included)

### Programmability

PC, Mac, Tablet, Smartphone

### Output Signal

DMX512 (1024 channels)

### Color Parameters

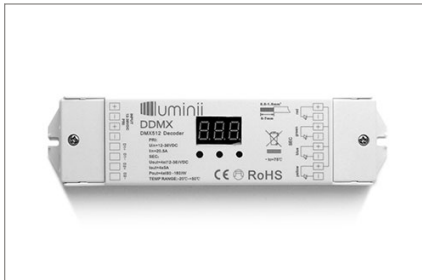
- Brightness
- Saturation
- Speed of color changing sequence
- Fading / dimming / brightness

# Plexineon Rings Suspended Mount

RGB, RGBW and RGBW Pixel

## DMX Decoder

DMX signal to RGBW decoder (required to operate DMX controller)



ORDERING CODE

MODEL

**DDMX-RGBW**

DDMX-RGBW - DMX decoder

Translates controller DMX512 programs for RGB and white LED strips.

Unique DMX address for the decoder can be set easily and displayed by the numeric display on the case. Changing and resetting the DMX address requires manual input.

Use power repeater to expand output.

### Operating Voltage

12-36 VDC

### Power Capacity

up to 96W at 24V

### Operating Temperature Range

from -4°F to +122°F in case

## Smart Pixel Decoder

SPI signal to DMX signal decoder



ORDERING CODE

MODEL

**SR-DMX-SPI**

SR-DMX-SPI - Smart Pixel Decoder

The SR-DMX-SPI is a smart LED pixel decoder that controls RGB/RGBW pixel LED strips with SPI signal. Designed with an OLED backlit panel, the pixel controller allows for easy configuration of most settings. Four push buttons are available for control of the LED functions.

\* For pixel only.

### Features

- 2 in 1 in-Wall Controller: DMX Control or Wireless RGB-W
- SPI signal output for RGB/RGBW pixel light control
- DMX512 controllable and RF/WIFI remote controllable
- Capable of addressing up to 1020 RGB pixels & 765 RGBW pixels
- OLED panel allows for easy configuration

### Operating Voltage

12 - 36V DC

### Power capacity

up to 96W at 24V

### Operating temperature range

from -4°F to +122°F in case