

Features

The MK45V Channel is a linear aluminum extrusion that has been designed to fit many LED lighting needs and specifically corner applications. Multiple configuration options allow for great flexibility in any installation. This small extrusion profile allows for more discreet integration into architectural elements, enabling a subtler, more refined aesthetic in both commercial and residential settings. MK45V Channel comes with multiple choices of diffuser lenses. Extrusion and lenses are field cuttable. Channels come with specified Mounting Clips and End Caps.

Finish

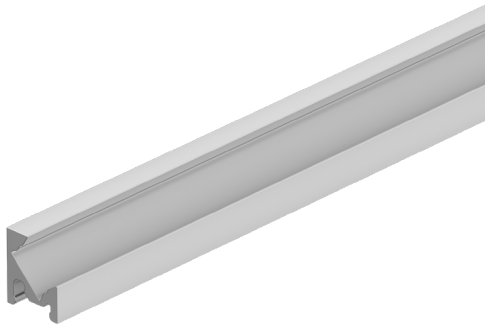
Silver anodized, White, Black, Bronze

Mounting

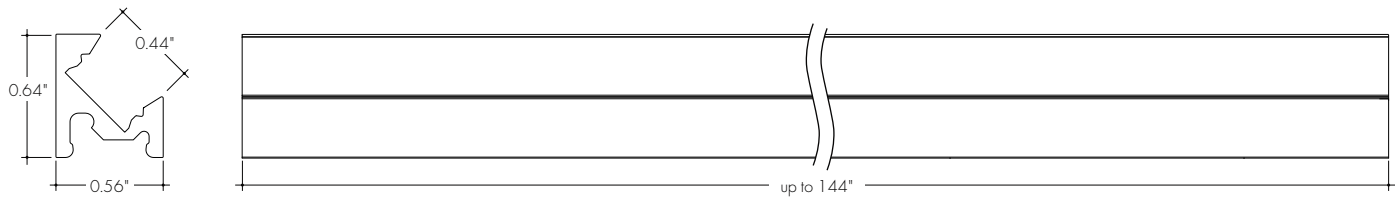
Concealed Bracket

Diffuser Lens

Polycarbonate, snap-in-place, UV resistant



Product Dimensions



INCLUDED MOUNTING ACCESSORIES

EXTRUSION LENGTH	END CAP PAIR	CONCEALED BRACKET
48"	1	3
72"	1	4
96"	1	5
120"	1	6
144"	1	7

Each pair of endcaps includes 1x H3 (no wire feed hole) and 1x H4 (with hole) where applicable. Additional endcaps and mounting clips are available for purchase.

Ordering Code

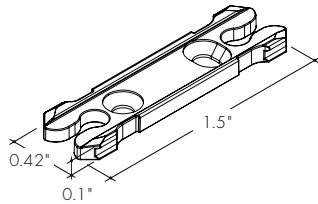
MODEL	LENGTH	LENS	MOUNTING ²	FINISH ⁴
MK45VC-Myka 45 Channel ¹ 48-48" 72-72" 96-96" ³ 120-120" ³ 144-144" ³	C-Clear F-Frosted HF-Half Frosted MF-Matte Frosted BLV-Black Blade Louver WLW-White Blade Louver	CB-Concealed Bracket	Base SA-Silver Anodized Standard BK-Black BZ-Bronze WH-White	

1 - End Caps are included with channel, one of H3 (no hole) and one of H4 (with hole). Order additional End Caps as necessary.
 2 - Mounting Clips are included with channel. Refer to chart above for provided mounting clip quantities. Order additional Mounting Clips as necessary.
 3 - For Channels and lenses over 90", incremental shipping charges will apply.
 4 - Non SA finishes may have extended lead times and price adder. Custom RALs are available, please consult Inside Sales with specific request.

All Channels come with a specified set of Mounting Clips and End Caps, see Ordering Code for details. Order additional Mounting Clips and End Caps as necessary.

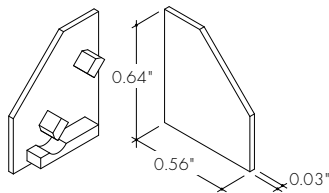
Mounting Clips

MB-MKC-CB
Myka Concealed Bracket
-CB

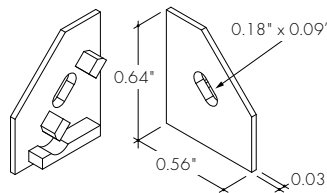


Endcaps

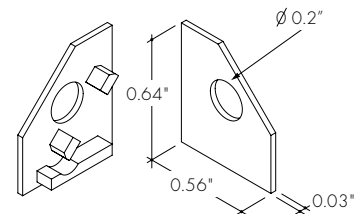
EC-MK45VC-F-L-H3-XX
Endcap with powerfeed opening



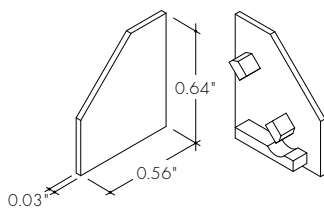
EC-MK45VC-F-L-H4-XX
Endcap with H4 powerfeed opening



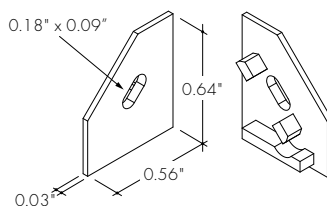
EC-MK45VC-F-L-H5-XX
Endcap with H5 powerfeed opening



EC-MK45VC-F-R-H3-XX
Endcap with powerfeed opening



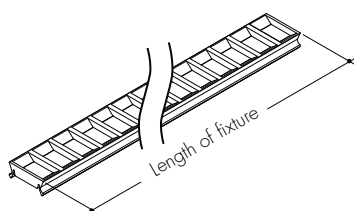
EC-MK45VC-F-R-H4-XX
Endcap with H4 powerfeed opening



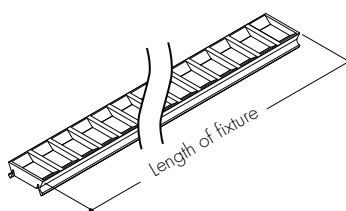
XX	Color
SA	Silver Anodized
WH	White
BK	Black
BZ	Bronze

Regressed Blade Louver

LV-BL-MKC-12-BK
Blade Louver reduces glare at high angle in two directions
Also available with complete fixture, use ordering code
-BLV



LV-BL-MKC-12-WH
Blade Louver reduces glare at high angle in two directions
Also available with complete fixture, use ordering code
-WLV



This Black louver/lens combo comes in 12" increments and sits in place of a Myka lens, not in addition to.

This White louver/lens combo comes in 12" increments and sits in place of a Myka lens, not in addition to.