

mCove - Installation Instructions

Models: M-



7777 N. Merrimac Ave
Niles, IL 60714
T 224.333.6033
F 224.757.7557
info@luminii.com
www.luminii.com



Please read all instructions prior to installation and keep for future reference!

- | | |
|--|--|
| 1. PRODUCT TO BE INSTALLED BY A QUALIFIED ELECTRICIAN. | 5. SURFACE MOUNT ONLY |
| 2. USE ONLY WITH CLASS 2 POWER UNIT | 6. SUITABLE FOR INSTALLATION WITHIN THE CLOSET STORAGE SPACE |
| 3. 24 VOLTS DC | 7. INHERENTLY PROTECTED |
| 4. SUITABLE FOR DAMP LOCATIONS | |

Page 1 of 3

1

reflector

fixture

1.2

screw

center of fixture

1.1

1.2

1.1 From the inside of the fixture, remove screws from the center.

1.2 Carefully, rotate and pull the reflector completely out.

2

wall

conduit

2.1

fixture

mark

DRILL HOLE LOCATION

2.1 Prior to installing the fixture, power wires must be present near fixture. Lay the fixture on the desired location, & mark the mounting holes to the wall. If fixture center hole doesn't match up with the conduit. Make an additional 1/2" hole to the back of extrusion. Use diagram above to make hole in the correct location.

3

corner fixture

straight fixture

3.1

3.1

joining bracket

3.1

3.1 IF CONNECTING MULTIPLE FIXTURES TOGETHER: Insert the joining brackets into one of the fixture end(s) & tighten the screws on the bracket. Then slide the connecting fixture into the brackets and secure by tightening the screws on bracket.

4

wall

4.1

anchor

mark

4.1

anchor

Phillips screwdriver

4.1 Align the anchors onto the marks and tap until the threaded section. Then screw in the threaded portion of the anchors with a Phillips screw driver.

5

wall

conduit

5.1

anchor

Phillips Screw

power wires

5.1 Bring in the power wires into the fixture. Align the fixture to the anchors and secure in place using the provided screws. Use the provided conduit connector if necessary, in accordance with local electrical codes.

6

reflector

6.1

fixture

6.2

reflector

cover

6.1 While holding the LED reflector connect the red & black wires to the power supply red (24VDC+) & black (24VDC-) wires. For additional wiring information refer to the power supply instruction.

6.2 Insert the LED panel into the fixture and secure using the provided screws. Snap-in the cover into the fixture.

mCove - Installation Instructions

Models: M-



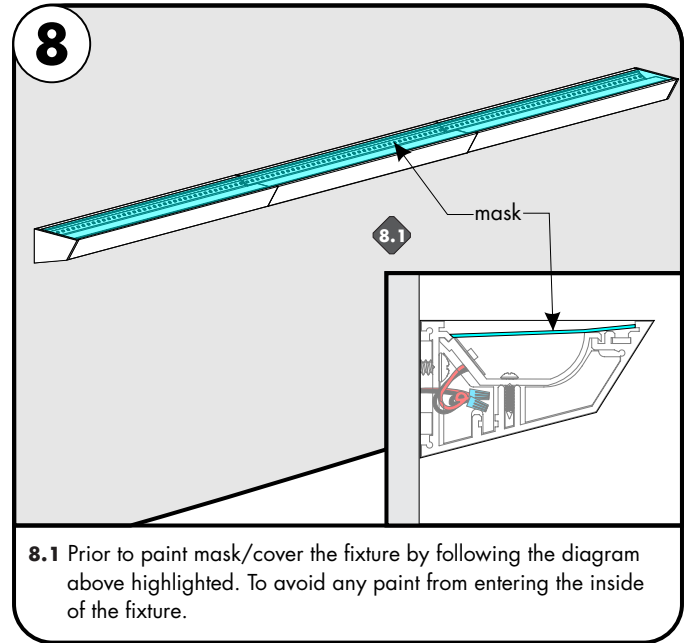
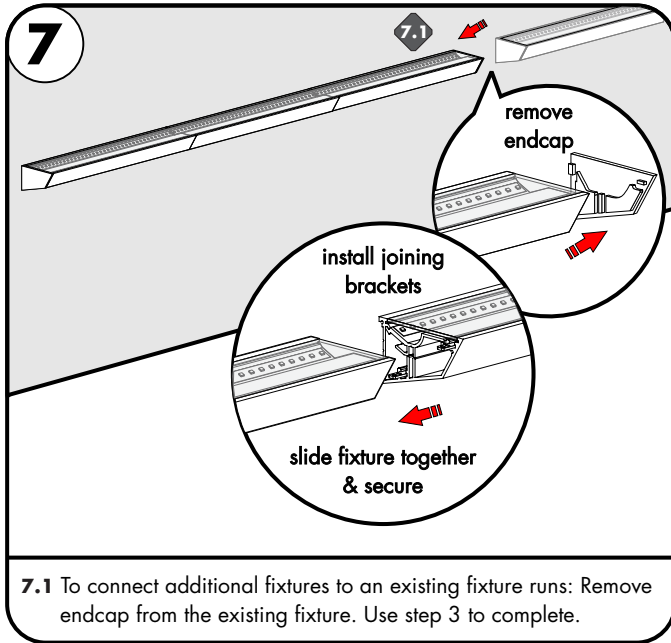
7777 N. Merrimac Ave
Niles, IL 60714
T 224.333.6033
F 224.757.7557
info@luminii.com
www.luminii.com



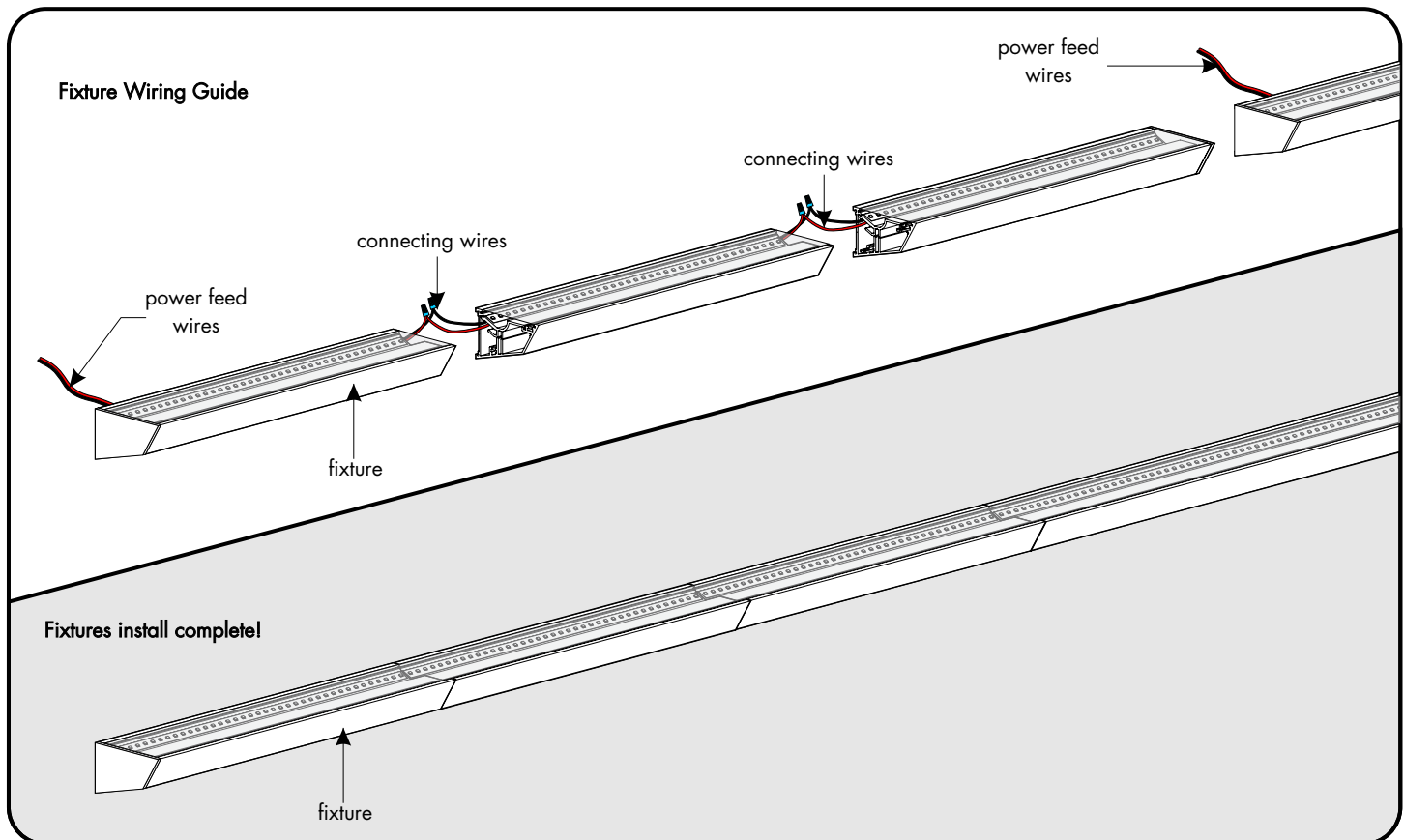
Please read all instructions prior to installation and keep for future reference!

1. PRODUCT TO BE INSTALLED BY A QUALIFIED ELECTRICIAN.
2. USE ONLY WITH CLASS 2 POWER UNIT
3. 24 VOLTS DC
4. SUITABLE FOR DAMP LOCATIONS
5. UNDER-CABINET / SURFACE MOUNT ONLY
6. SUITABLE FOR INSTALLATION WITHIN THE CLOSET STORAGE SPACE
7. INHERENTLY PROTECTED

Page 2 of 3



mCove sample layout



mCove - Installation Instructions

Models: M-



7777 N. Merrimac Ave
Niles, IL 60714
T 224.333.6033
F 224.757.7557
info@luminii.com
www.luminii.com



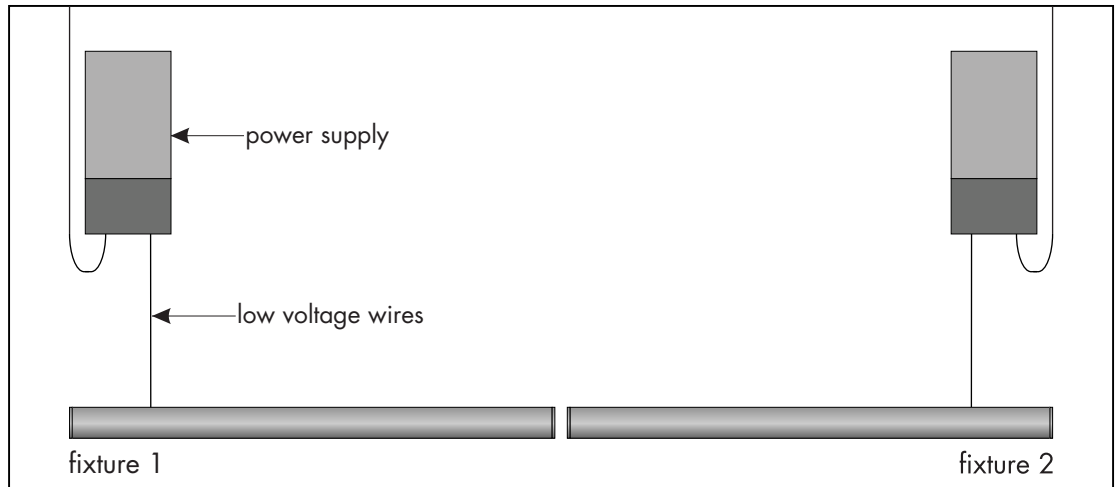
Please read all instructions prior to installation and keep for future reference!

1. PRODUCT TO BE INSTALLED BY A QUALIFIED ELECTRICIAN.
2. USE ONLY WITH CLASS 2 POWER UNIT
3. 24 VOLTS DC
4. SUITABLE FOR DAMP LOCATIONS
5. UNDER-CABINET / SURFACE MOUNT ONLY
6. SUITABLE FOR INSTALLATION WITHIN THE CLOSET STORAGE SPACE
7. INHERENTLY PROTECTED

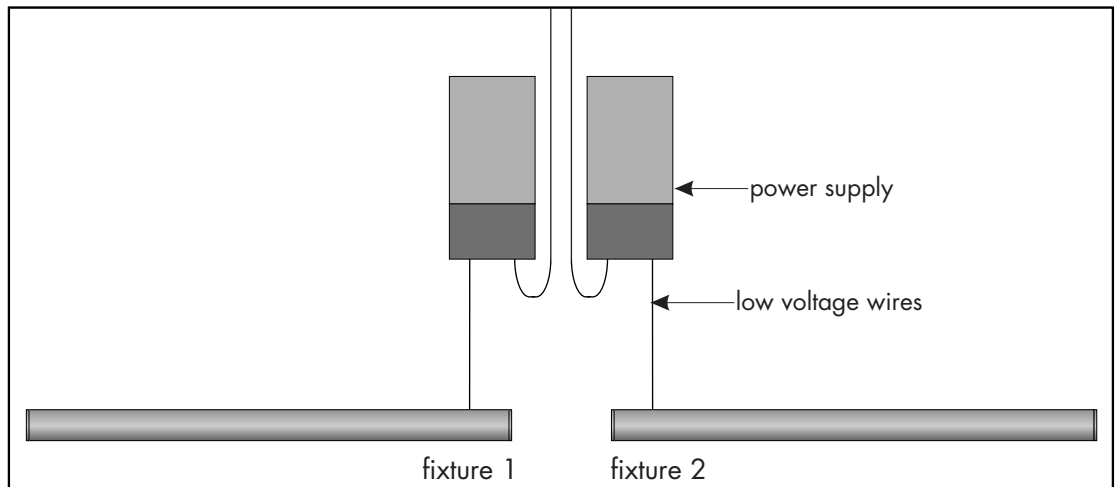
Page 3 of 3

multiple powerfeed layouts

power supplies at the end of the run



power supplies in the middle of the run



consecutive layout, NOT RECOMMENDED

