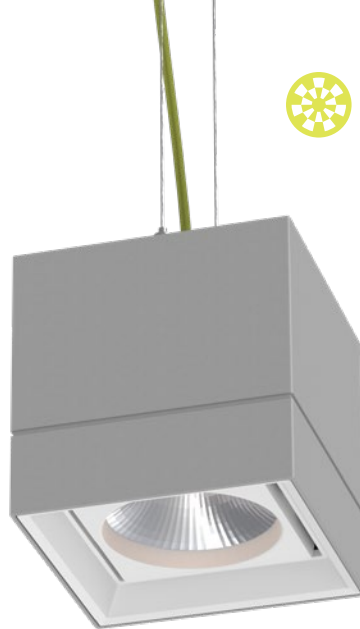


# LETO 44 PLUS P SML

PENDANT LED DOWNLIGHT



**Leto 44 Plus SML - Pendant LED Light.** Leto 44 Plus SML is a compact version of the larger Leto 44 Plus MID. Packing the same power as the taller Body, Leto 44 Plus SML can offer more discretion when planning your lighting, and allow for easier recessing into a ceiling structure.

## Ordering Code

Fixture	<b>709</b>							
	1	2	3	4	5	6	7	8
Driver							--	--
	1	2	3	4	5	6	7	8

## Product Specifications

SAMPLE: Fixture **709 - A90 - 610 - 27 - 07 - AR - 08 - 02** | Driver **952 - 08 - 00 - 01 - LCS - 120 - A90 - 07**

1 - Model	2 - LED	3 - Optic	4 - CCT	5 - Lumen	6 - Accessory
<b>709</b> · Leto 44 Plus Small Pendant	<b>A90</b> · 93+ CRI Accuracy	<i>Faceted</i> <i>Smooth</i> <b>610</b> · 10° <b>630S</b> · 30° <b>618</b> · 18° <b>645S</b> · 45° <b>630</b> · 30° <b>645</b> · 45° <b>660</b> · 60°	<b>25</b> · 2500K <b>27</b> · 2700K <b>30</b> · 3000K <b>35</b> · 3500K <b>40</b> · 4000K <b>65</b> · 6500K	<b>07</b> · 700 (6.1W) <b>10</b> · 1000 (9.1W) <b>15</b> · 1500 (14W) <b>20</b> · 2000 (19.8W)	<b>00</b> · No Accessory <b>DL</b> · Diffusing Lens <b>HO</b> · Honeycomb <b>SL</b> · Solite Lens

7 - Body Color	8 - Baffle Color	1 - Canopy Style	2 - Canopy Color	3 - Suspension (6' incl.)
<i>Standard</i> <i>Premium</i> <b>01</b> · White <b>52</b> · Mocha <b>02</b> · Black <b>53</b> · Charcoal <b>08</b> · Silver <b>54</b> · Cerulean <b>55</b> · Firebrick <b>XX</b> · RAL	<i>Standard</i> <i>Premium</i> <b>01</b> · White <b>52</b> · Mocha <b>02</b> · Black <b>53</b> · Charcoal <b>08</b> · Silver <b>54</b> · Cerulean <b>55</b> · Firebrick <b>XX</b> · RAL	<b>952</b> · Square	<i>Standard</i> <i>Premium</i> <b>01</b> · White <b>52</b> · Mocha <b>02</b> · Black <b>53</b> · Charcoal <b>08</b> · Silver <b>54</b> · Cerulean <b>55</b> · Firebrick <b>XX</b> · RAL	<b>02</b> · 2 Aircraft + Feed Cable <b>03</b> · Solid Stem (6' MAX) <b>04</b> · Hang Straight Solid Stem <b>05</b> · 2 Powered Aircraft* Contact Senso for custom length

4 - Suspension Color	5 - Driver	Dim Level	Dim Level	6 - Voltage	7 - LED	8 - Lumen
<b>00</b> · None* <b>01</b> · White <b>02</b> · Black <b>03</b> · Clear <b>XX</b> · Custom	<b>STD</b> · Non Dimming <b>LCS</b> · 0 - 10 Volt Protocol <b>DIM</b> · Phase* <b>ELDOLC</b> · EldoLED 0 - 10 Volt <b>DALI</b> · Dali Protocol	N/A 1% 1% 0.1% 0.1%	<b>LUTES</b> · Hilume Ecodigital <b>LUT2W</b> · 2 Wire for phase* <b>DMX</b> · Senso <b>EMG</b> · Emergency Driver* <b>CSMB</b> · Casambi Wireless Control*	<b>120</b> · 120V <b>277</b> · 277V <b>347</b> · 347V*	Same as Fixture Same as Fixture	Same as Fixture Same as Fixture

\*1 no suspension cable color option for **05** - 2 Powered Aircraft  
 \*2 120V only  
 \*3 remote mount  
 \*4 second driver required  
 \*5 not available with ELDO, Lutron or DMX

# LETO 44 PLUS P SML

PENDANT LED DOWNLIGHT

## Canopy

### Square Canopy

2 Aircraft Cable  
w/ Feed Cable

2 Powered  
Aircraft Cable

Solid Stem

Hang Straight  
Solid Stem



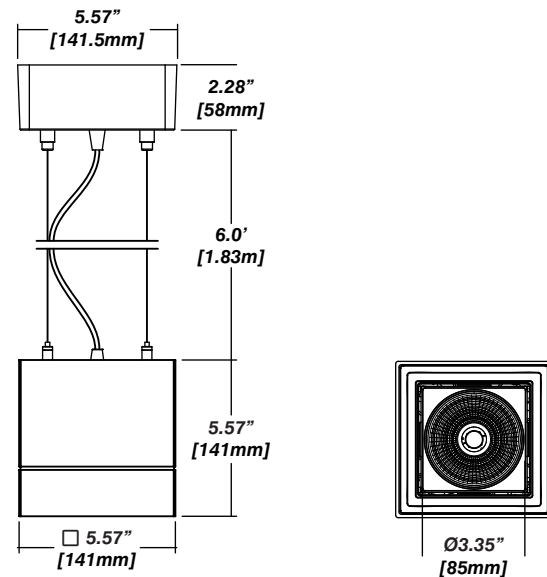
## Installation

- The included canopy fits on a standard junction box
- Height adjustable aircraft cable, feed cable or solid stem suspension (specify height) included
- Electrical feed cable included

## Construction / Finish

- High quality, scratch resistant powder coated finish in standard, premium or custom colors
- Aluminum extruded Body
- Made in Canada

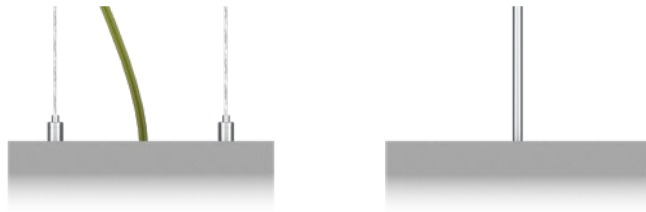
## Dimensions



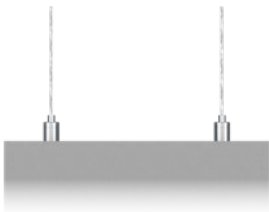
## Suspension

Double Aircraft Cable

Suspended by Solid Stem

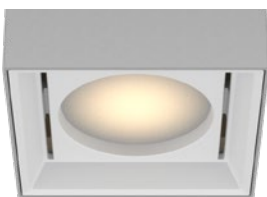


Powered Aircraft

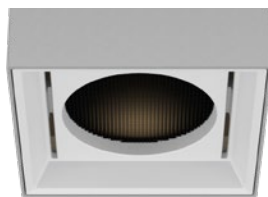


## Body Accessories

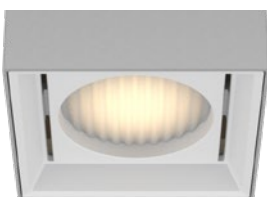
Diffusing Lens



Honeycomb Mesh

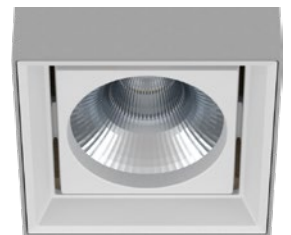


Solite Lens



## Reflector

Senso metal spun faceted reflectors are specifically designed to retain as much light as possible. This results in a more power efficient fixture with a higher delivered lumen.



# LETO 44 PLUS P SML

## PENDANT LED DOWNLIGHT

Senso's in-house photometric testing ensures that our lighting design can match your needs precisely. Our Goniophotometer and testing lab produces on-demand photometry files based on any specified fixture, including LM-79 Test reports, IES Files, and CRI/CCT measurements. See [Sensolighting.com](http://Sensolighting.com) for more information.

*\*Full photometric Reports and IES files available for every configuration*

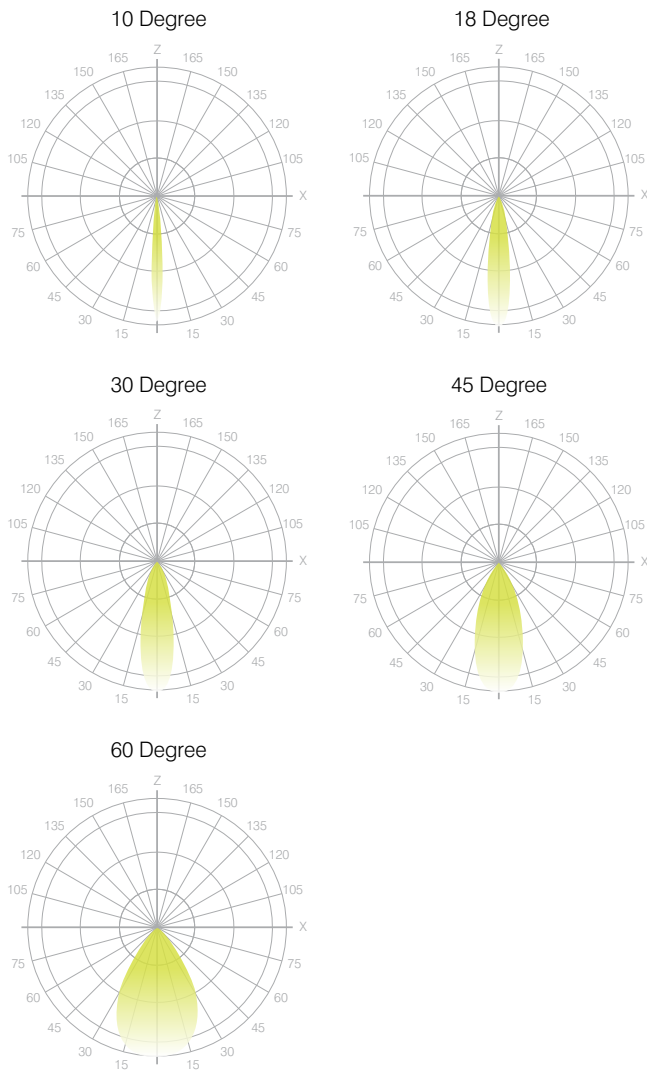
## Color Metrics

### TM 30-15

Our clients deserve the best information possible about their lighting choices. That's why Senso has invested in the Illuminating Engineering Society (IES) TM 30-15, a new system that measures an LED light source's color rendering properties. Using Senso's state-of-the-art goniophotometer, this method identifies the optimal light source for your project and helps evaluate the trade-offs between efficacy and color rendering. Senso can provide TM 30-15 data for all of our products.

*\*Full Color Metric Info Available at [Sensolighting.com](http://Sensolighting.com)*

## Leto Light Distribution: Reflector



## LED Module Performance

**Output:** Up to 150 lumen/Watt

**Efficacy:** Color consistency within a 3-MacAdam Ellipse

**CCT:** 2500K - 6500K

**Color Rendering:** 93+ CRI

**Min. R Values:** R<sup>9</sup> - 60 R<sup>1</sup> - 90 R<sup>9</sup> - 100

## Driver and Power Consumption

**Dimming:** 1% dimming standard with 0.1% option

Casambi wireless control available

**Ripple:** Industry leading Low ripple

**Efficiency:** Power Factor >0.9

Efficiency over 85%

Class 2 output for safety

**Installation:** Remote mounted

Lumen Option	700lm	1000lm	1500lm	2000lm
Fixture Wattage	6.1W	9.1W	14W	19.8W
Delivered Lumen	674lm	962lm	1459lm	1946lm