



**Features**

Kurba Large Horizontal is a UL676 Pool Rated light strip with a sleek, direct view profile. Suitable for submersion max 6 ft deep and capable of horizontal/side bends up to 6" radius. Built with robust factory made power feeds or end caps using UL676 Pool Rated SJTW cabling, Kurba Large Horizontal Pool Rated mounts to a specifically designed thick plastic channel.

**Applications**

Pools, Fountains, and Ponds

**Environment**

Submersible to max 6ft deep. Water must be <4% salt concentration, <2PPM chlorine, <0.3PPM ozone. Natural hot springs not permissible.

**Operating Voltage**

24VDC

**Operating Temperature**

-4°F to 113°F (-20°C to 45°C)

**Average Life**

50,000 hours

**Dimming**

Low voltage dimmer and class 2 dimming power supply required

**Approvals**

Class 2, UL676, Pool Rated

**Warranty**

3 years



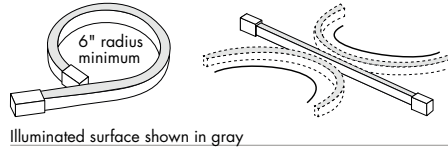
**Technical Information**

| Model                           | KBL-SF-H-PL | CCT INFO / LUMEN MULTIPLIER |                          |
|---------------------------------|-------------|-----------------------------|--------------------------|
|                                 |             | Color Temperature           | Multiplier (ref. -3000K) |
| LEDs/ft                         | 33          | 2200K                       | 0.98                     |
| Light Output at 3000K           | 178 lm/ft   | 2400K                       | 1.00                     |
| Average Power Consumption at 4' | 3.7 W/ft    | 2700K                       | 1.03                     |
| Ordering Increment              | 2.19"       | 3000K                       | 1.00                     |
| Maximum Run Length (In Series)  | 25 ft       | 3500K                       | 1.09                     |
|                                 |             | 4000K                       | 1.10                     |

**Constraints**

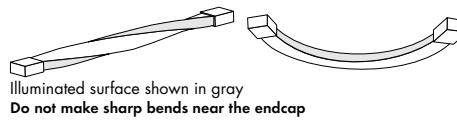
**Bend Direction**

Bend LED in these positions only to avoid damage

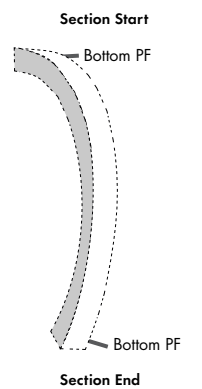


**Prohibited Bends**

Twisting or bending LED in these positions will cause damage

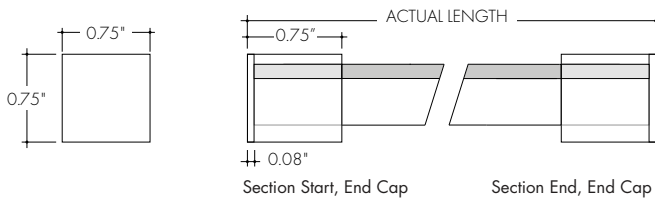


**Power Feed Locations**

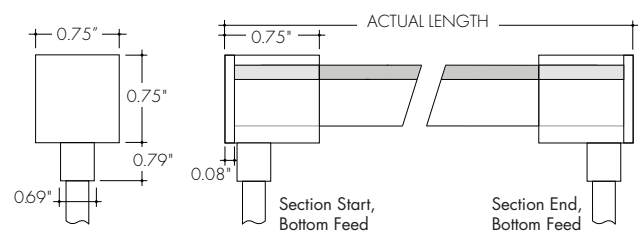


**Section Start/End Power Feed Options**

SJTW Cable Injection Molded End Cap (SEC)



SJTW Cable Injection Molded Bottom Feed (SBPF)



**Ordering Code**

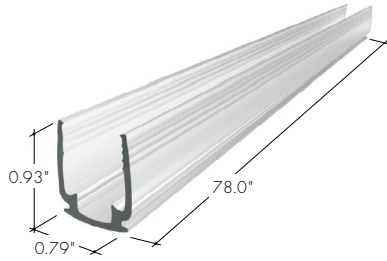
| MODEL   | CCT  | SECTION START   | SECTION END   | ACTUAL LENGTH   |
|---|--|---|---|---|
| KBL-SF-H-PL - Kurba Large, Flat, Horizontal/Side Bend, Pool Rated | 22K-2200K<br>24K-2400K<br>27K-2700K<br>30K-3000K<br>35K-3500K<br>40K-4000K | SBPF - Pool Rated Black SJTW Cable Injection Molded Bottom Feed (30' wire lead) <sup>1</sup><br>SEC - Pool Rated Black SJTW Cable Injection Molded End Cap <sup>1</sup> | SBPF - Pool Rated Black SJTW Cable Injection Molded Bottom Feed (30' wire lead) <sup>1</sup><br>SEC - Pool Rated Black SJTW Cable Injection Molded End Cap <sup>1</sup> | See Power Consumption table on page 3 for available lengths |

1 - 6-8 weeks lead time. Kurba injected-molded orders are non-cancellable.

## Mounting Accessories

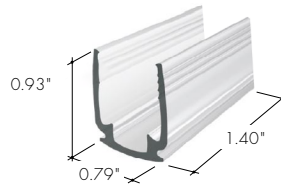
### MC-NFP-KBL-78

Thickened Plastic Mounting Channel for underwater application, 78"



### MB-NFP-KBL-ST

Thickened Plastic Mounting Bracket for underwater application, 1.4"

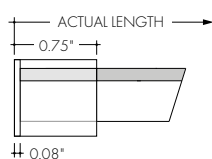


**Power Consumption Per Fixture Length**

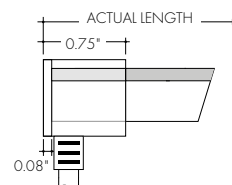
Based on operation with PDCU series of power supplies. Use Acutal Length for Order Code Entry  
 Tolerance for Actual Lengths less than 6 ft is +/- 0.2", Actual Lengths between 6 ft and 16 ft is +/- 0.3", and Actual Lengths greater than 16 ft is +/- 0.6"

| Nominal Length (in) | Actual Length (in) |             |             |                     | Actual Length (in) |              |              |                     | Actual Length (in) |              |              |                     | Actual Length (in) |              |              |  |
|---------------------|--------------------|-------------|-------------|---------------------|--------------------|--------------|--------------|---------------------|--------------------|--------------|--------------|---------------------|--------------------|--------------|--------------|--|
|                     | W                  | SBPF SBPF   | SEC SBPF    | Nominal Length (in) | W                  | SBPF SBPF    | SEC SBPF     | Nominal Length (in) | W                  | SBPF SBPF    | SEC SBPF     | Nominal Length (in) | W                  | SBPF SBPF    | SEC SBPF     |  |
| 2                   | -                  | -           | -           | 79                  | 24.1               | <b>78.9</b>  | <b>78.9</b>  | (13 ft) 155         | 47.4               | <b>155.5</b> | <b>155.5</b> | 232                 | 70.7               | <b>232</b>   | <b>232</b>   |  |
| 5                   | -                  | -           | -           | 81                  | 24.7               | <b>81.1</b>  | <b>81.1</b>  | 158                 | 48.1               | <b>157.7</b> | <b>157.7</b> | 234                 | 71.4               | <b>234.2</b> | <b>234.2</b> |  |
| 7                   | 2                  | <b>6.7</b>  | <b>6.7</b>  | (7 ft) 83           | 25.4               | <b>83.3</b>  | <b>83.3</b>  | 160                 | 48.7               | <b>159.8</b> | <b>159.8</b> | 236                 | 72.1               | <b>236.4</b> | <b>236.4</b> |  |
| 9                   | 2.7                | <b>8.9</b>  | <b>8.9</b>  | 85                  | 26.1               | <b>85.5</b>  | <b>85.5</b>  | 162                 | 49.4               | <b>162</b>   | <b>162</b>   | 239                 | 72.7               | <b>238.6</b> | <b>238.6</b> |  |
| (1 ft) 11           | 3.4                | <b>11.1</b> | <b>11.1</b> | 88                  | 26.7               | <b>87.7</b>  | <b>87.7</b>  | 164                 | 50.1               | <b>164.2</b> | <b>164.2</b> | (20 ft) 241         | 73.4               | <b>240.8</b> | <b>240.8</b> |  |
| 13                  | 4.1                | <b>13.3</b> | <b>13.3</b> | 90                  | 27.4               | <b>89.8</b>  | <b>89.8</b>  | 166                 | 50.7               | <b>166.4</b> | <b>166.4</b> | 243                 | 74.1               | <b>243</b>   | <b>243</b>   |  |
| 15                  | 4.7                | <b>15.5</b> | <b>15.5</b> | 92                  | 28.1               | <b>92</b>    | <b>92</b>    | (14 ft) 169         | 51.4               | <b>168.6</b> | <b>168.6</b> | 245                 | 74.7               | <b>245.1</b> | <b>245.1</b> |  |
| 18                  | 5.4                | <b>17.7</b> | <b>17.7</b> | 94                  | 28.7               | <b>94.2</b>  | <b>94.2</b>  | 171                 | 52.1               | <b>170.8</b> | <b>170.8</b> | 247                 | 75.4               | <b>247.3</b> | <b>247.3</b> |  |
| 20                  | 6.1                | <b>19.8</b> | <b>19.8</b> | (8 ft) 96           | 29.4               | <b>96.4</b>  | <b>96.4</b>  | 173                 | 52.7               | <b>173</b>   | <b>173</b>   | 250                 | 76.1               | <b>249.5</b> | <b>249.5</b> |  |
| 22                  | 6.7                | <b>22</b>   | <b>22</b>   | 99                  | 30.1               | <b>98.6</b>  | <b>98.6</b>  | 175                 | 53.4               | <b>175.2</b> | <b>175.2</b> | (21 ft) 252         | 76.7               | <b>251.7</b> | <b>251.7</b> |  |
| (2 ft) 24           | 7.4                | <b>24.2</b> | <b>24.2</b> | 101                 | 30.7               | <b>100.8</b> | <b>100.8</b> | 177                 | 54.1               | <b>177.3</b> | <b>177.3</b> | 254                 | 77.4               | <b>253.9</b> | <b>253.9</b> |  |
| 26                  | 8.1                | <b>26.4</b> | <b>26.4</b> | 103                 | 31.4               | <b>103</b>   | <b>103</b>   | (15 ft) 180         | 54.7               | <b>179.5</b> | <b>179.5</b> | 256                 | 78.1               | <b>256.1</b> | <b>256.1</b> |  |
| 29                  | 8.7                | <b>28.6</b> | <b>28.6</b> | 105                 | 32.1               | <b>105.2</b> | <b>105.2</b> | 182                 | 55.4               | <b>181.7</b> | <b>181.7</b> | 258                 | 78.7               | <b>258.3</b> | <b>258.3</b> |  |
| 31                  | 9.4                | <b>30.8</b> | <b>30.8</b> | (9 ft) 107          | 32.7               | <b>107.3</b> | <b>107.3</b> | 184                 | 56.1               | <b>183.9</b> | <b>183.9</b> | 260                 | 79.4               | <b>260.5</b> | <b>260.5</b> |  |
| 33                  | 10.1               | <b>33</b>   | <b>33</b>   | 110                 | 33.4               | <b>109.5</b> | <b>109.5</b> | 186                 | 56.7               | <b>186.1</b> | <b>186.1</b> | 263                 | 80.1               | <b>262.6</b> | <b>262.6</b> |  |
| (3 ft) 35           | 10.7               | <b>35.2</b> | <b>35.2</b> | 112                 | 34.1               | <b>111.7</b> | <b>111.7</b> | 188                 | 57.4               | <b>188.3</b> | <b>188.3</b> | (22 ft) 265         | 80.7               | <b>264.8</b> | <b>264.8</b> |  |
| 37                  | 11.4               | <b>37.3</b> | <b>37.3</b> | 114                 | 34.7               | <b>113.9</b> | <b>113.9</b> | 190                 | 58.1               | <b>190.5</b> | <b>190.5</b> | 267                 | 81.4               | <b>267</b>   | <b>267</b>   |  |
| 40                  | 12.1               | <b>39.5</b> | <b>39.5</b> | 116                 | 35.4               | <b>116.1</b> | <b>116.1</b> | (16 ft) 193         | 58.7               | <b>192.7</b> | <b>192.7</b> | 269                 | 82.1               | <b>269.2</b> | <b>269.2</b> |  |
| 42                  | 12.7               | <b>41.7</b> | <b>41.7</b> | 118                 | 36.1               | <b>118.3</b> | <b>118.3</b> | 195                 | 59.4               | <b>194.8</b> | <b>194.8</b> | 271                 | 82.7               | <b>271.4</b> | <b>271.4</b> |  |
| 44                  | 13.4               | <b>43.9</b> | <b>43.9</b> | (10 ft) 120         | 36.7               | <b>120.5</b> | <b>120.5</b> | 197                 | 60.1               | <b>197</b>   | <b>197</b>   | 274                 | 83.4               | <b>273.6</b> | <b>273.6</b> |  |
| 46                  | 14.1               | <b>46.1</b> | <b>46.1</b> | 123                 | 37.4               | <b>122.7</b> | <b>122.7</b> | 199                 | 60.7               | <b>199.2</b> | <b>199.2</b> | (23 ft) 276         | 84.1               | <b>275.8</b> | <b>275.8</b> |  |
| (4 ft) 48           | 14.7               | <b>48.3</b> | <b>48.3</b> | 125                 | 38.1               | <b>124.8</b> | <b>124.8</b> | 201                 | 61.4               | <b>201.4</b> | <b>201.4</b> | 278                 | 84.7               | <b>278</b>   | <b>278</b>   |  |
| 50                  | 15.4               | <b>50.5</b> | <b>50.5</b> | 127                 | 38.7               | <b>127</b>   | <b>127</b>   | (17 ft) 204         | 62.1               | <b>203.6</b> | <b>203.6</b> | 280                 | 85.4               | <b>280.1</b> | <b>280.1</b> |  |
| 53                  | 16.1               | <b>52.7</b> | <b>52.7</b> | 129                 | 39.4               | <b>129.2</b> | <b>129.2</b> | 206                 | 62.7               | <b>205.8</b> | <b>205.8</b> | 282                 | 86.1               | <b>282.3</b> | <b>282.3</b> |  |
| 55                  | 16.7               | <b>54.8</b> | <b>54.8</b> | (11 ft) 131         | 40.1               | <b>131.4</b> | <b>131.4</b> | 208                 | 63.4               | <b>208</b>   | <b>208</b>   | 285                 | 86.7               | <b>284.5</b> | <b>284.5</b> |  |
| 57                  | 17.4               | <b>57</b>   | <b>57</b>   | 134                 | 40.7               | <b>133.6</b> | <b>133.6</b> | 210                 | 64.1               | <b>210.2</b> | <b>210.2</b> | 287                 | 87.4               | <b>286.7</b> | <b>286.7</b> |  |
| (5 ft) 59           | 18.1               | <b>59.2</b> | <b>59.2</b> | 136                 | 41.4               | <b>135.8</b> | <b>135.8</b> | 212                 | 64.7               | <b>212.3</b> | <b>212.3</b> | (24 ft) 289         | 88.1               | <b>288.9</b> | <b>288.9</b> |  |
| 61                  | 18.7               | <b>61.4</b> | <b>61.4</b> | 138                 | 42.1               | <b>138</b>   | <b>138</b>   | 215                 | 65.4               | <b>214.5</b> | <b>214.5</b> | 291                 | 88.7               | <b>291.1</b> | <b>291.1</b> |  |
| 64                  | 19.4               | <b>63.6</b> | <b>63.6</b> | 140                 | 42.7               | <b>140.2</b> | <b>140.2</b> | (18 ft) 217         | 66.1               | <b>216.7</b> | <b>216.7</b> | 293                 | 89.4               | <b>293.3</b> | <b>293.3</b> |  |
| 66                  | 20.1               | <b>65.8</b> | <b>65.8</b> | 142                 | 43.4               | <b>142.3</b> | <b>142.3</b> | 219                 | 66.7               | <b>218.9</b> | <b>218.9</b> | 295                 | 90.1               | <b>295.5</b> | <b>295.5</b> |  |
| 68                  | 20.7               | <b>68</b>   | <b>68</b>   | (12 ft) 145         | 44.1               | <b>144.5</b> | <b>144.5</b> | 221                 | 67.4               | <b>221.1</b> | <b>221.1</b> | 298                 | 90.7               | <b>297.6</b> | <b>297.6</b> |  |
| 70                  | 21.4               | <b>70.2</b> | <b>70.2</b> | 147                 | 44.7               | <b>146.7</b> | <b>146.7</b> | 223                 | 68.1               | <b>223.3</b> | <b>223.3</b> | (25 ft) 300         | 91.4               | <b>299.8</b> | <b>299.8</b> |  |
| (6 ft) 72           | 22.1               | <b>72.3</b> | <b>72.3</b> | 149                 | 45.4               | <b>148.9</b> | <b>148.9</b> | 225                 | 68.7               | <b>225.5</b> | <b>225.5</b> |                     |                    |              |              |  |
| 75                  | 22.7               | <b>74.5</b> | <b>74.5</b> | 151                 | 46.1               | <b>151.1</b> | <b>151.1</b> | (19 ft) 228         | 69.4               | <b>227.6</b> | <b>227.6</b> |                     |                    |              |              |  |
| 77                  | 23.4               | <b>76.7</b> | <b>76.7</b> | 153                 | 46.7               | <b>153.3</b> | <b>153.3</b> | 230                 | 70.1               | <b>229.8</b> | <b>229.8</b> |                     |                    |              |              |  |

SJTW Cable Injection Molded End Cap (SEC)



SJTW Cable Injection Molded Bottom Feed (SBPF)



### Power Supplies

See Power Supply Instructions and spec sheet for wiring information. For a complete list of compatible dimmers, see [Compatible Dimming Chart](#) on the Resources page.

#### Universal Power Supply 1% 120VAC - 277VAC

| MODEL                              | INPUT CONTROL              | ENVIRONMENT     | POWER     | OUTPUT      |
|------------------------------------|----------------------------|-----------------|-----------|-------------|
| PS - Pool & Spa Rated Power Supply | UNI - 0-10V, Phase Dimming | PR - Pool Rated | 96 - 96 W | 24 - 24 VDC |

0-10V dims down to 1%, MIW/ELV/TRIAC dims down to 1%.  
For a complete list of compatible dimmers, see [Compatible Dimming Chart](#) on the Resources page.

| MODELS | PS-UNI-PR-96-24 |
|--------|-----------------|
| Length | 8.71"           |
| Width  | 4.56"           |
| Depth  | 1.86"           |

