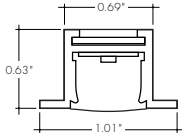


**Features**

- 24VDC Class 2 fixtures made to order up to 144". Fixtures can be linked up to 48' depending on output
- Suitable for millwork, architectural reveals, accent lighting and recessed applications
- Approved for closet/storage space installation per NEC 410.16(A)(3) and 410.16(C)(5)
- Class 2 listed for damp locations
- Dot free even illumination with frosted lens
- Proprietary strong bond solder method handles up to 50 lbs of pull force on wire leads and connectors
- High Color Quality options offer premium quality and vibrant colors with R9 values up to 97
- High Efficacy options offer best in class output and efficacy with over 810 lm/ft and up to 115 lm/W
- 5 Year warranty



**Finish Options** (see page 2 for additional information)

- Silver Anodized
- White
- Aged Brass
- Black
- Matte Black
- Polished Gold
- Bronze
- Warm Nickel
- Chrome



**Technical Information**

| MODEL  | High Color Quality |           |           | High Efficacy |           |           |           | High Efficacy |
|--|--------------------|-----------|-----------|---------------|-----------|-----------|-----------|---------------|
|  | 72SO               | 72HO      | 72VHO     | HE48LO        | HE48SO    | HE48MO    | HE48HO    | HE64VHO       |
| <b>OUTPUT OPTIONS</b>  |                    |           |           |               |           |           |           |               |
| Lumens Output (3000K)<br><small>(with a Clear Lens)</small>    | 222 lm/ft          | 361 lm/ft | 439 lm/ft | 217 lm/ft     | 300 lm/ft | 401 lm/ft | 643 lm/ft | 813 lm/ft     |
| Average Power Consumption<br><small>(for a 4" section)</small> | 2.8 W/ft           | 4.8 W/ft  | 6 W/ft    | 1.9 W/ft      | 2.8 W/ft  | 3.5 W/ft  | 6.5 W/ft  | 7.5 W/ft      |
| Efficacy   | 79 lm/W            | 75 lm/W   | 73 lm/W   | 114 lm/W      | 107 lm/W  | 115 lm/W  | 99 lm/W   | 108 lm/W      |
| Max Run Length<br><small>(in series)</small>                   | 40 ft              | 31 ft     | 22 ft     | 48 ft         | 42 ft     | 33 ft     | 21 ft     | 15 ft         |
| Max Ambient Temperature*                                       | 50°C [122°F]       |           |           | 50°C [122°F]  |           |           |           | 50°C [122°F]  |

\*Max Ambient Temperature to maintain L70 of 50k+ hours. Exceeding Max Ambient Temperature may result in decreased life/output. Consult Technical Support for specific inquiries.

**High Color Quality (72)**

| CCT   | Multiplier<br><small>(reference - 3000K)</small> | CRI | TM-30          |                |                |
|-------|--|-----|----------------|----------------|----------------|
|       |  |     | R <sub>f</sub> | R <sub>g</sub> | R <sub>9</sub> |
| 1900K | 0.55   | 96  | 94             | 97             | 90             |
| 2200K | 0.70   | 96  | 95             | 101            | 89             |
| 2400K | 0.72   | 98  | 97             | 101            | 91             |
| 2700K | 0.74   | 97  | 96             | 101            | 91             |
| 3000K | 1.00   | 97  | 95             | 104            | 97             |
| 3500K | 1.02   | 97  | 94             | 105            | 97             |
| 4100K | 1.07   | 97  | 90             | 99             | 97             |

**High Efficacy (HE48/HE64)**

| CCT   | Multiplier<br><small>(reference - 3000K)</small> | CRI | TM-30          |                |                |
|-------|--|-----|----------------|----------------|----------------|
|       |  |     | R <sub>f</sub> | R <sub>g</sub> | R <sub>9</sub> |
| 2200K | 0.73   | 92  | 91             | 97             | 42             |
| 2500K | 0.81   | 93  | 96             | 96             | 62             |
| 2700K | 0.94   | 92  | 90             | 99             | 58             |
| 3000K | 1.00   | 92  | 89             | 99             | 57             |
| 3500K | 1.02   | 92  | 89             | 99             | 60             |
| 4000K | 1.02   | 92  | 86             | 94             | 71             |

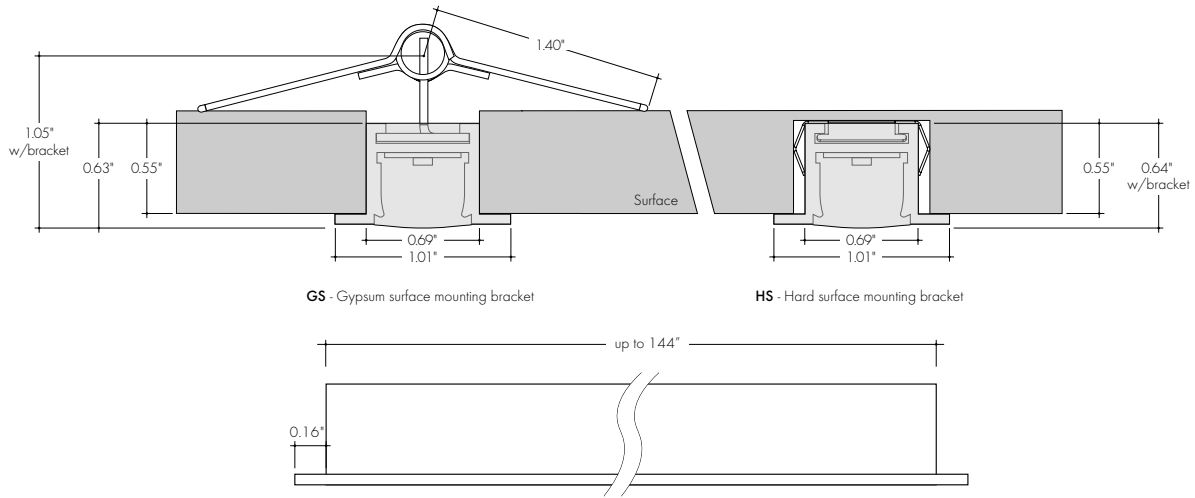
**Ordering Code**

| MODEL                | LENGTH <sup>1</sup>         | OUTPUT   | CCT  | LENS <sup>2</sup>  | MOUNTING  | FINISH <sup>3</sup>  | POSITION | POWER FEED  |
|----------------------|-----------------------------|--|--|--|---|--|----------|---|
| KRM-Kendo M Recessed | 12" - 144"<br>1" increments | 72SO - Standard<br>72HO - High<br>72VHO - Very High  | 27K - 2700K<br>30K - 3000K<br>35K - 3500K<br>41K - 4100K                               | C - Clear Lens<br>HF - Half Frosted<br>FF - Flat Frosted<br>F - Frosted<br>GR - Narrow Beam Grazer | HS - Hard Surface Mounting Bracket<br>GS - Gypsum Surface Mounting Bracket<br>NB - No Bracket | SA - Silver Anodized<br>BK - Black<br>BZ - Bronze<br>WH - White<br>MBK - Matte Black<br>WN - Warm Nickel<br>AB - Aged Brass<br>PG - Polished Gold <sup>4</sup><br>CH - Chrome <sup>4</sup> | B - Back | P1 - 72" plenum wires on one end<br>PIX2 72" plenum wires on both ends<br>2-72" rip cord on one end, quick connect at other<br>3 - Single Quick Connect<br>4 - Dual Quick Connect |
|                      | 12" - 144"<br>2" increments | HE48LO - Low<br>HE48SO - Standard<br>HE48MO - Medium<br>HE48HO - High<br>HE64VHO - Very High | 22K - 2200K<br>25K - 2500K<br>27K - 2700K<br>30K - 3000K<br>35K - 3500K<br>40K - 4000K |  |   |  |          |   |

1 - Custom lengths and increments are available, please consult Inside Sales with specific request.  
2 - All High Efficacy options can be used to comply with Title 24 JA8. High Color Quality options can be used to comply with Title 24 JA8 depending on Output, CCT, and Lens selections. See multiplier charts to calculate specific efficacies.

3 - Non SA finishes may have extended lead times. Custom RALs are available, please consult Inside Sales with specific request.  
4 - Polished Gold finishes have a maximum fixture length of 48", and Chrome finishes have a maximum fixture length of 72".

**Product Dimensions**



**Finish Options**

- Finish options are available in a wide variety, allowing for complete customization of style and aesthetic.
- Non Silver Anodized finishes may have extended lead times.
- Polished Gold finishes have a maximum fixture length of 48", and Chrome finishes have a maximum fixture length of 72".
- Custom RALs are available, please consult Inside Sales with specific request.

**Silver Anodized**



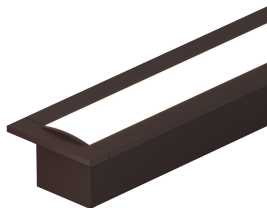
Silver Anodized is a soft silver with a clear finish.

**Black**



Black is a true deep black with a glossy finish.

**Bronze**



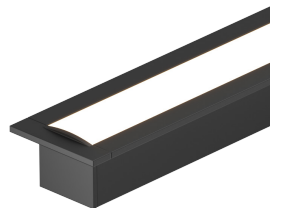
Bronze is a rich, dark brown with a satin finish.

**White**



White is a polar bright white and field paintable.

**Matte Black**



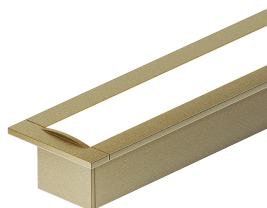
Matte Black is a dark, pitch-black with a soft flat finish.

**Warm Nickel**



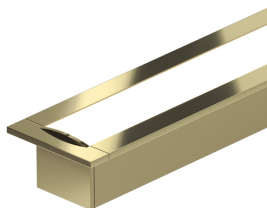
Warm Nickel is a soft, silvery smoke with warm tones and a satin finish.

**Aged Brass**



Aged Brass is a deep brown shade with slightly golden undertones.

**Polished Gold**



Polished Gold is bright and radiant for a brilliant finish.

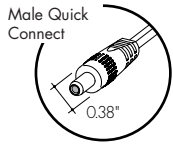
**Chrome**



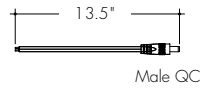
Chrome is a highly reflective silver polish.

**Powerfeeds and Connectors**

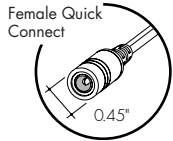
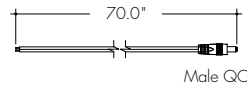
**Linking and Extension Cable Options**



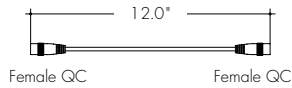
**LMC-12**  
Male quick-connect, 2 pin, 12"



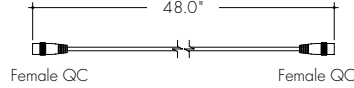
**LMC-70**  
Male quick-connect long, 2 pin, 70"



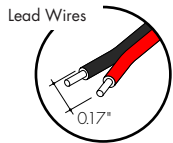
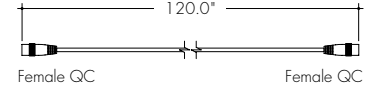
**EC-12**  
Female to Female Extension Cable, 2 pin, 12"



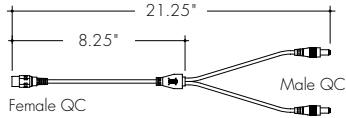
**EC-48**  
Female to Female Extension Cable, 2 pin, 48"



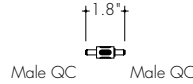
**EC-120**  
Female to Female Extension Cable, 2 pin, 120"



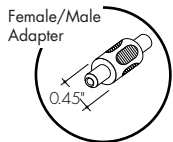
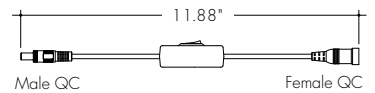
**LYC**  
1 Female to 2 Male Splitter Cable, 2 pin, 12"



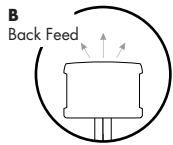
**FMA**  
Female to male adapter



**IS-DC**  
Male to Female Inline DC Switch, 2 pin, 12"



**Powerfeeds Position/Type**



**P1**  
72" plenum wires on one end



**P1X2**  
72" plenum wires on both ends



**2**  
72" rip cord on one end, quick connect at other



**3**  
Single Female Quick Connect

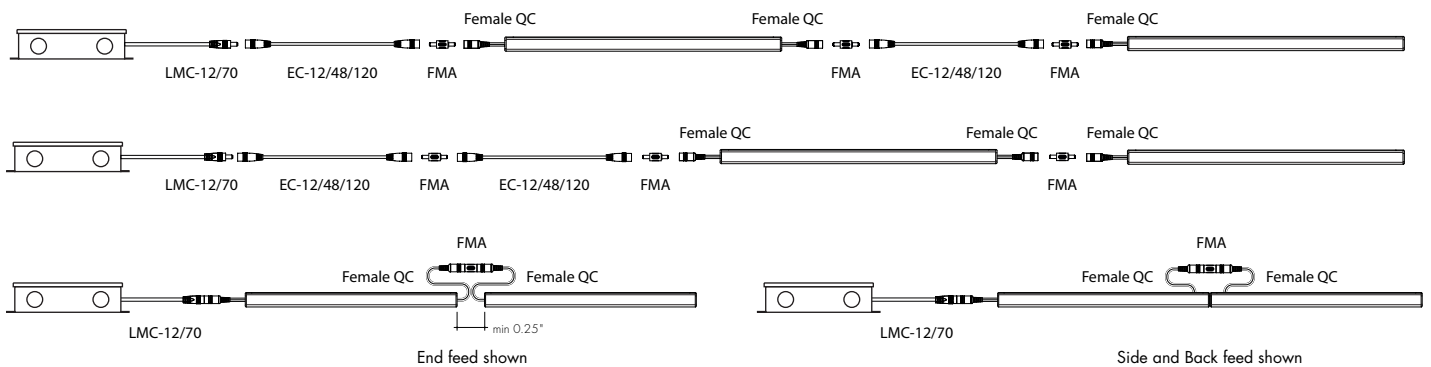


**4**  
Dual Female Quick Connect



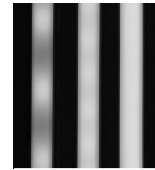
All wires are 18 AWG unless otherwise specified

**Sample Layout**



Light Transmission and Dotting

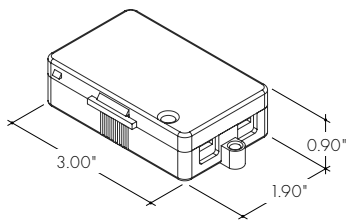
| Output Options                 | Lens/Accessory |              |                    |              |         |
|--------------------------------|----------------|--------------|--------------------|--------------|---------|
|                                | Clear          | Half Frosted | Narrow Beam Grazer | Flat Frosted | Frosted |
| 72SO                           | CD             | CD           | CD                 | ND           | ND      |
| 72HO                           | CD             | CD           | CD                 | ND           | ND      |
| 72VHO                          | CD             | CD           | CD                 | ND           | ND      |
| HE48LO                         | CD             | CD           | CD                 | ND           | ND      |
| HE48SO                         | CD             | CD           | CD                 | ND           | ND      |
| HE48MO                         | CD             | CD           | CD                 | ND           | ND      |
| HE48HO                         | CD             | CD           | CD                 | ND           | ND      |
| HE64VHO                        | CD             | CD           | CD                 | ND           | ND      |
| <b>Transmission Percentage</b> | 100%           | 83%          | 69%                | 63%          | 55%     |



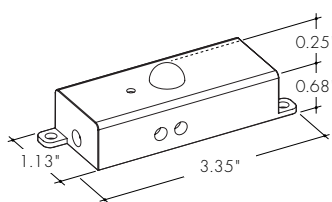
**CD** **SD** **ND**  
**CD** - Clear Dotting  
**SD** - Slight Dotting  
**ND** - No Dotting

Accessory Options

**LVSP-4T-BK**  
Low Voltage, 4 Terminal Splice Box, Black

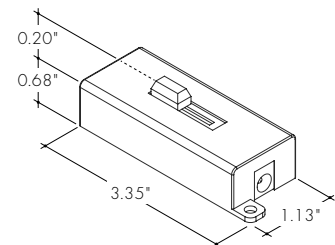


**OS-DC-F4-BK**  
Occupancy Sensor



Male Quick Connect, FMA, LMC, LYC, or IS-DC are required for input and output.

**DIM-DC-F4-BK**  
24VDC Low Voltage In-line Dimmer Module

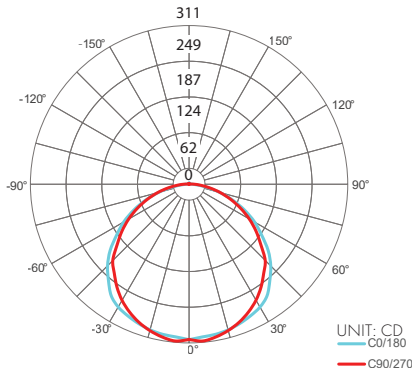


Male Quick Connect, FMA, LMC, LYC, or IS-DC are required for input and output.

Photometry

KRM-48-72VHO-30K-F

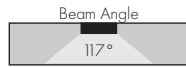
Kendo RM, 4ft, 3000K, VHO, Frosted Lens



Zonal Lumen Summary 3000K

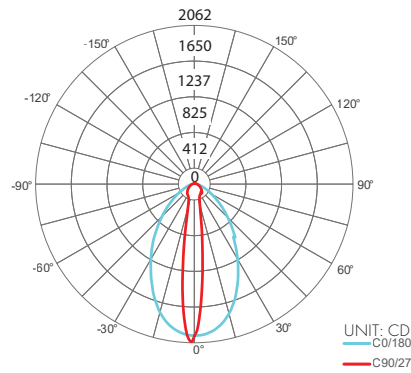
| Zone  | Lumen | % Fixture |
|-------|-------|-----------|
| 0-30  | 245   | 25.1%     |
| 0-40  | 407   | 41.8%     |
| 0-60  | 738   | 75.8%     |
| 0-90  | 960   | 98.6%     |
| 0-180 | 975   | 100%      |

Total



KRM-48-72VHO-30K-GR

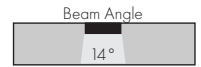
Kendo RM, 4ft, 3000K, VHO, Narrow Beam Grazer Lens



Zonal Lumen Summary 3000K

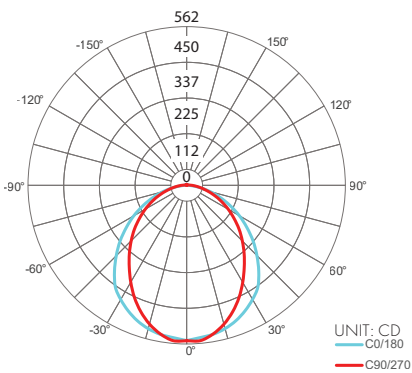
| Zone  | Lumen | % Fixture |
|-------|-------|-----------|
| 0-30  | 563   | 46.4%     |
| 0-40  | 761   | 62.9%     |
| 0-60  | 1061  | 87.6%     |
| 0-90  | 1198  | 98.9%     |
| 0-180 | 1211  | 100%      |

Total



KRM-48-72VHO-30K-HF

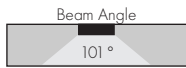
Kendo RM, 4ft, 3000K, VHO, Half Frosted Lens



Zonal Lumen Summary 3000K

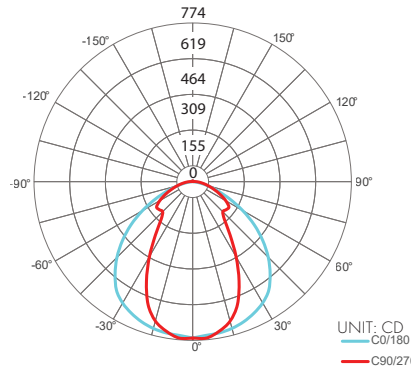
| Zone  | Lumen | % Fixture |
|-------|-------|-----------|
| 0-30  | 419   | 28.8%     |
| 0-40  | 674   | 46.2%     |
| 0-60  | 1147  | 78.7%     |
| 0-90  | 1438  | 98.7%     |
| 0-180 | 1457  | 100%      |

Total



KRM-48-72VHO-30K-C

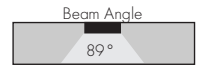
Kendo RM, 4ft, 3000K, VHO, Clear Lens



Zonal Lumen Summary 3000K

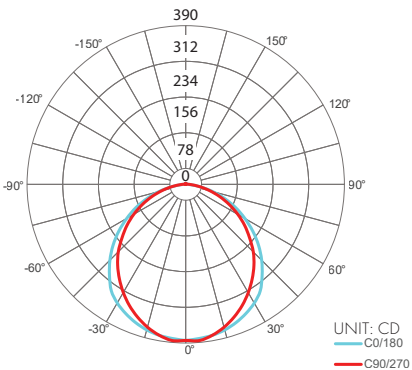
| Zone  | Lumen | % Fixture |
|-------|-------|-----------|
| 0-30  | 586   | 33.3%     |
| 0-40  | 912   | 51.9%     |
| 0-60  | 1433  | 81.5%     |
| 0-90  | 1734  | 98.7%     |
| 0-180 | 1757  | 100%      |

Total



KRM-48-72VHO-30K-FF

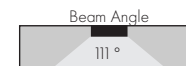
Kendo RM, 4ft, 3000K, VHO, Flat Frosted Lens



Zonal Lumen Summary 3000K

| Zone  | Lumen | % Fixture |
|-------|-------|-----------|
| 0-30  | 298   | 26.8%     |
| 0-40  | 489   | 43.9%     |
| 0-60  | 867   | 77.8%     |
| 0-90  | 1102  | 98.9%     |
| 0-180 | 1114  | 100%      |

Total



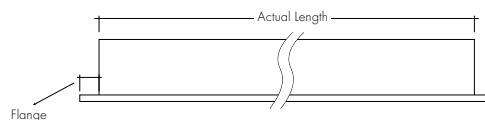
**Power Consumption**

Tested at Full Power with PDC Series power supplies.

Standard Nominal Lengths offered provide minimal shadowing. For alternate lengths, please consult Inside Sales with specific request.

**High Color Quality (72)**

| Nominal Length (in) | Back Feed Actual Length | Watts |      |      | Nominal Length (in) | Back Feed Actual Length | Watts |      |      | Nominal Length (in) | Back Feed Actual Length | Watts |      |      | Nominal Length (in) | Back Feed Actual Length | Watts |      |      |
|---------------------|-------------------------|-------|------|------|---------------------|-------------------------|-------|------|------|---------------------|-------------------------|-------|------|------|---------------------|-------------------------|-------|------|------|
|                     |                         | SO    | HO   | VHO  |                     |                         | SO    | HO   | VHO  |                     |                         | SO    | HO   | VHO  |                     |                         | SO    | HO   | VHO  |
| 12                  | 11 5/16                 | 2.7   | 4.4  | 6.2  | 47                  | 46 1/16                 | 10.2  | 17.1 | 22.6 | 82                  | 81 15/16                | 18.3  | 29.5 | 38.4 | 117                 | 116 7/16                | 25.9  | 40.8 | 52.4 |
| 13                  | 12 7/16                 | 2.7   | 4.4  | 6.2  | 48                  | 47 3/16                 | 10.5  | 17.4 | 23.1 | 83                  | —                       | 18.5  | 29.8 | 38.8 | 118                 | 117 9/16                | 26.1  | 41.1 | 52.8 |
| 14                  | 13 10/16                | 2.9   | 4.8  | 6.7  | 49                  | 48 6/16                 | 10.7  | 17.8 | 23.5 | 84                  | 84                      | 18.7  | 30.1 | 39.2 | 119                 | 118 12/16               | 26.3  | 41.4 | 53.2 |
| 15                  | 14 12/16                | 3.1   | 5.2  | 7.3  | 50                  | 49 8/16                 | 11.1  | 18.6 | 24.4 | 85                  | —                       | —     | —    | —    | 120                 | 119 14/16               | 26.5  | 41.7 | 53.6 |
| 16                  | 15 15/16                | 3.4   | 5.6  | 7.8  | 51                  | 50 11/16                | 11.4  | 18.9 | 24.9 | 86                  | 85 3/16                 | 19.2  | 30.8 | 40.0 | 121                 | —                       | —     | —    | —    |
| 17                  | —                       | —     | —    | —    | 52                  | 51 13/16                | 11.6  | 19.3 | 25.3 | 87                  | 86 5/16                 | 19.4  | 31.1 | 40.4 | 122                 | 121 1/16                | 26.7  | 42.0 | 54.0 |
| 18                  | 17 1/16                 | 3.6   | 6.0  | 8.3  | 53                  | 53                      | 11.9  | 19.7 | 25.7 | 88                  | 87 8/16                 | 19.6  | 31.5 | 40.8 | 123                 | 122 3/16                | 27.1  | 42.6 | 54.7 |
| 19                  | 18 4/16                 | 3.9   | 6.5  | 8.9  | 54                  | —                       | —     | —    | —    | 89                  | 88 10/16                | 19.9  | 31.8 | 41.1 | 124                 | 123 6/16                | 27.3  | 42.9 | 55.0 |
| 20                  | 19 6/16                 | 4.4   | 7.3  | 9.9  | 55                  | 54 2/16                 | 12.1  | 20.1 | 26.1 | 90                  | 89 13/16                | 20.1  | 32.2 | 41.5 | 125                 | 124 8/16                | 27.5  | 43.1 | 55.4 |
| 21                  | 20 9/16                 | 4.6   | 7.7  | 10.5 | 56                  | 55 5/16                 | 12.3  | 20.5 | 26.6 | 91                  | 90 15/16                | 20.4  | 32.5 | 41.9 | 126                 | 125 11/16               | 27.7  | 43.4 | 55.7 |
| 22                  | 21 11/16                | 4.8   | 8.1  | 11.0 | 57                  | 56 7/16                 | 12.8  | 21.3 | 27.4 | 92                  | —                       | —     | —    | —    | 127                 | 126 14/16               | 27.9  | 43.7 | 56.1 |
| 23                  | 22 14/16                | 5.1   | 8.6  | 11.5 | 58                  | 57 10/16                | 13.1  | 21.6 | 27.8 | 93                  | 92 2/16                 | 20.6  | 32.9 | 42.3 | 128                 | —                       | —     | —    | —    |
| 24                  | —                       | —     | —    | —    | 59                  | 58 12/16                | 13.3  | 22.0 | 28.3 | 94                  | 93 4/16                 | 21.1  | 33.6 | 43.1 | 129                 | 128                     | 28.1  | 43.9 | 56.4 |
| 25                  | 24 1/16                 | 5.3   | 9.0  | 12.1 | 60                  | 59 15/16                | 13.6  | 22.4 | 28.7 | 95                  | 94 7/16                 | 21.3  | 33.9 | 43.4 | 130                 | 129 3/16                | 28.5  | 44.5 | 57.1 |
| 26                  | 25 3/16                 | 5.6   | 9.4  | 12.6 | 61                  | —                       | —     | —    | —    | 96                  | 95 9/16                 | 21.5  | 34.2 | 43.8 | 131                 | 130 5/16                | 28.7  | 44.7 | 57.4 |
| 27                  | 26 6/16                 | 5.8   | 9.8  | 13.1 | 62                  | 61 1/16                 | 13.8  | 22.8 | 29.1 | 97                  | 96 12/16                | 21.8  | 34.6 | 44.2 | 132                 | 131 8/16                | 28.9  | 45.0 | 57.8 |
| 28                  | 27 8/16                 | 6.2   | 10.5 | 14.1 | 63                  | 62 4/16                 | 14.0  | 23.1 | 29.6 | 98                  | 97 14/16                | 22.0  | 34.9 | 44.6 | 133                 | 132 10/16               | 29.1  | 45.3 | 58.1 |
| 29                  | 28 11/16                | 6.5   | 10.9 | 14.5 | 64                  | 63 6/16                 | 14.5  | 23.8 | 30.5 | 99                  | —                       | —     | —    | —    | 134                 | 133 13/16               | 29.3  | 45.5 | 58.4 |
| 30                  | 29 13/16                | 6.7   | 11.2 | 15.0 | 65                  | 64 9/16                 | 14.7  | 24.1 | 31.0 | 100                 | 99 1/16                 | 22.2  | 35.2 | 45.0 | 135                 | 134 15/16               | 29.5  | 45.7 | 58.7 |
| 31                  | 31                      | 6.9   | 11.6 | 15.5 | 66                  | 65 12/16                | 14.9  | 24.4 | 31.4 | 101                 | 100 3/16                | 22.5  | 35.9 | 45.9 | 136                 | —                       | —     | —    | —    |
| 32                  | —                       | —     | —    | —    | 67                  | 66 14/16                | 15.1  | 24.7 | 31.9 | 102                 | 101 6/16                | 22.7  | 36.2 | 46.3 | 137                 | 136 2/16                | 29.6  | 45.9 | 59.1 |
| 33                  | 32 2/16                 | 7.1   | 12.0 | 16.0 | 68                  | —                       | —     | —    | —    | 103                 | 102 8/16                | 22.9  | 36.5 | 46.7 | 138                 | 137 4/16                | 30.0  | 46.3 | 59.7 |
| 34                  | 33 5/16                 | 7.3   | 12.3 | 16.5 | 69                  | 68 1/16                 | 15.3  | 25.0 | 32.4 | 104                 | 103 11/16               | 23.1  | 36.8 | 47.1 | 139                 | 138 7/16                | 30.2  | 46.5 | 60.0 |
| 35                  | 34 7/16                 | 7.8   | 13.1 | 17.4 | 70                  | 69 3/16                 | 15.5  | 25.4 | 32.8 | 105                 | 104 13/16               | 23.3  | 37.1 | 47.5 | 140                 | 139 9/16                | 30.3  | 46.8 | 60.3 |
| 36                  | 35 10/16                | 8.0   | 13.4 | 17.9 | 71                  | 70 6/16                 | 15.8  | 25.7 | 33.3 | 106                 | —                       | —     | —    | —    | 141                 | 140 12/16               | 30.5  | 47.0 | 60.6 |
| 37                  | 36 12/16                | 8.2   | 13.8 | 18.4 | 72                  | 71 8/16                 | 16.2  | 26.3 | 34.2 | 107                 | 106                     | 23.5  | 37.4 | 48.0 | 142                 | 141 14/16               | 30.7  | 47.2 | 61.0 |
| 38                  | 37 15/16                | 8.4   | 14.2 | 18.9 | 73                  | 72 11/16                | 16.4  | 26.6 | 34.7 | 108                 | 107 3/16                | 23.9  | 38.1 | 48.8 | 143                 | —                       | —     | —    | —    |
| 39                  | —                       | —     | —    | —    | 74                  | 73 13/16                | 16.6  | 26.9 | 35.1 | 109                 | 108 5/16                | 24.1  | 38.4 | 49.2 | 144                 | 143 1/16                | 30.8  | 47.4 | 61.3 |
| 40                  | 39 1/16                 | 8.7   | 14.5 | 19.3 | 75                  | 75                      | 16.8  | 27.3 | 35.5 | 110                 | 109 8/16                | 24.3  | 38.7 | 49.6 |                     |                         |       |      |      |
| 41                  | 40 4/16                 | 8.9   | 14.9 | 19.8 | 76                  | —                       | —     | —    | —    | 111                 | 110 10/16               | 24.5  | 39.0 | 50.0 |                     |                         |       |      |      |
| 42                  | 41 6/16                 | 9.3   | 15.6 | 20.7 | 77                  | 76 2/16                 | 17.1  | 27.6 | 35.9 | 112                 | 111 13/16               | 24.8  | 39.3 | 50.4 |                     |                         |       |      |      |
| 43                  | 42 9/16                 | 9.6   | 16.0 | 21.2 | 78                  | 77 5/16                 | 17.3  | 27.9 | 36.3 | 113                 | 112 15/16               | 25.0  | 39.6 | 50.8 |                     |                         |       |      |      |
| 44                  | 43 12/16                | 9.8   | 16.4 | 21.7 | 79                  | 78 7/16                 | 17.7  | 28.5 | 37.2 | 114                 | —                       | —     | —    | —    |                     |                         |       |      |      |
| 45                  | 44 14/16                | 10.0  | 16.7 | 22.1 | 80                  | 79 10/16                | 17.9  | 28.9 | 37.6 | 115                 | 114 2/16                | 25.2  | 39.9 | 51.2 |                     |                         |       |      |      |
| 46                  | —                       | —     | —    | —    | 81                  | 80 12/16                | 18.1  | 29.2 | 38.0 | 116                 | 115 4/16                | 25.6  | 40.5 | 52.0 |                     |                         |       |      |      |



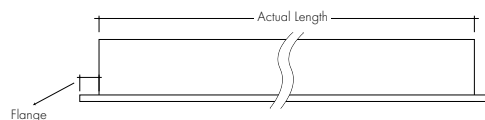
**Power Consumption**

Tested at Full Power with PDC Series power supplies.

Standard Nominal Lengths offered provide minimal shadowing. For alternate lengths, please consult Inside Sales with specific request.

**High Efficacy (HE48)**

| Nominal Length (in) | Back Feed Actual Length | Watts |      |      |      | Nominal Length (in) | Back Feed Actual Length | Watts |      |      |      | Nominal Length (in) | Back Feed Actual Length | Watts |      |      |      | Nominal Length (in) | Back Feed Actual Length | Watts |      |      |      |
|---------------------|-------------------------|-------|------|------|------|---------------------|-------------------------|-------|------|------|------|---------------------|-------------------------|-------|------|------|------|---------------------|-------------------------|-------|------|------|------|
|                     |                         | LO    | SO   | MO   | HO   |                     |                         | LO    | SO   | MO   | HO   |                     |                         | LO    | SO   | MO   | HO   |                     |                         | LO    | SO   | MO   | HO   |
| 12                  | 10 11/16                | 1.7   | 2.5  | 3.5  | 5.7  | 47                  | 46 2/16                 | 6.9   | 10.7 | 13.3 | 24.7 | 82                  | 81 9/16                 | 12.5  | 19.9 | 23.9 | 42.2 | 117                 | -                       | -     | -    | -    |      |
| 13                  | 12 11/16                | 1.7   | 2.5  | 3.5  | 5.7  | 48                  | -                       | -     | -    | -    | -    | 83                  | -                       | -     | -    | -    | -    | 118                 | 117                     | 17.5  | 27.7 | 34.3 | 58.7 |
| 14                  | -                       | -     | -    | -    | -    | 49                  | 48 2/16                 | 7.1   | 11.2 | 13.9 | 25.4 | 84                  | 83 9/16                 | 12.8  | 20.3 | 24.5 | 43.1 | 119                 | 119                     | 17.8  | 28.1 | 34.9 | 59.6 |
| 15                  | 14 10/16                | 2.0   | 3.0  | 4.0  | 7.2  | 50                  | -                       | -     | -    | -    | -    | 85                  | -                       | -     | -    | -    | -    | 120                 | -                       | -     | -    | -    | -    |
| 16                  | -                       | -     | -    | -    | -    | 51                  | 50 1/16                 | 7.4   | 11.7 | 14.5 | 26.3 | 86                  | 85 8/16                 | 13.1  | 20.8 | 25.1 | 44.1 | 121                 | 120 15/16               | 18.1  | 28.6 | 35.5 | 60.5 |
| 17                  | 16 10/16                | 2.4   | 3.5  | 4.6  | 8.7  | 52                  | -                       | -     | -    | -    | -    | 87                  | -                       | -     | -    | -    | -    | 122                 | -                       | -     | -    | -    | -    |
| 18                  | -                       | -     | -    | -    | -    | 53                  | 52 1/16                 | 7.7   | 12.3 | 15.1 | 27.4 | 88                  | 87 8/16                 | 13.4  | 21.3 | 25.7 | 45.0 | 123                 | 122 15/16               | 18.3  | 29.0 | 36.0 | 62.1 |
| 19                  | 18 9/16                 | 2.7   | 3.9  | 5.2  | 10.2 | 54                  | -                       | -     | -    | -    | -    | 89                  | -                       | -     | -    | -    | -    | 124                 | -                       | -     | -    | -    | -    |
| 20                  | -                       | -     | -    | -    | -    | 55                  | 54                      | 8.0   | 12.9 | 15.7 | 28.5 | 90                  | 89 7/16                 | 13.7  | 21.7 | 26.3 | 46.0 | 125                 | 124 14/16               | 18.4  | 29.5 | 36.6 | 63.8 |
| 21                  | 20 9/16                 | 3.0   | 4.4  | 5.8  | 11.7 | 56                  | 56                      | 8.4   | 13.5 | 16.4 | 29.5 | 91                  | -                       | -     | -    | -    | -    | 126                 | -                       | -     | -    | -    | -    |
| 22                  | -                       | -     | -    | -    | -    | 57                  | -                       | -     | -    | -    | -    | 92                  | 91 7/16                 | 14.0  | 22.1 | 26.9 | 47.0 | 127                 | 126 14/16               | 18.6  | 29.9 | 37.2 | 65.4 |
| 23                  | 22 8/16                 | 3.4   | 4.9  | 6.4  | 13.2 | 58                  | 57 15/16                | 8.7   | 14.0 | 17.0 | 30.6 | 93                  | -                       | -     | -    | -    | -    | 128                 | -                       | -     | -    | -    | -    |
| 24                  | -                       | -     | -    | -    | -    | 59                  | -                       | -     | -    | -    | -    | 94                  | 93 6/16                 | 14.3  | 22.6 | 27.5 | 47.9 | 129                 | 128 13/16               | 18.8  | 30.4 | 37.7 | 67.0 |
| 25                  | 24 8/16                 | 3.7   | 5.4  | 7.0  | 14.7 | 60                  | 59 15/16                | 9.0   | 14.6 | 17.6 | 31.6 | 95                  | -                       | -     | -    | -    | -    | 130                 | -                       | -     | -    | -    | -    |
| 26                  | -                       | -     | -    | -    | -    | 61                  | -                       | -     | -    | -    | -    | 96                  | 95 6/16                 | 14.4  | 22.8 | 27.8 | 48.4 | 131                 | 130 13/16               | 18.9  | 30.8 | 38.3 | 68.6 |
| 27                  | 26 7/16                 | 4.1   | 5.9  | 7.5  | 15.8 | 62                  | 61 14/16                | 9.4   | 15.2 | 18.2 | 32.6 | 97                  | -                       | -     | -    | -    | -    | 132                 | -                       | -     | -    | -    | -    |
| 28                  | -                       | -     | -    | -    | -    | 63                  | -                       | -     | -    | -    | -    | 98                  | 97 5/16                 | 14.7  | 23.3 | 28.5 | 49.4 | 133                 | 132 12/16               | 19.1  | 31.2 | 38.9 | 70.2 |
| 29                  | 28 7/16                 | 4.4   | 6.4  | 8.1  | 16.8 | 64                  | 63 14/16                | 9.7   | 15.6 | 18.7 | 33.7 | 99                  | -                       | -     | -    | -    | -    | 134                 | -                       | -     | -    | -    | -    |
| 30                  | -                       | -     | -    | -    | -    | 65                  | -                       | -     | -    | -    | -    | 100                 | 99 5/16                 | 15.0  | 23.7 | 29.0 | 50.4 | 135                 | 134 12/16               | 19.3  | 31.8 | 39.4 | 70.7 |
| 31                  | 30 6/16                 | 4.8   | 6.9  | 8.7  | 17.9 | 66                  | 65 13/16                | 10.0  | 16.1 | 19.2 | 34.7 | 101                 | -                       | -     | -    | -    | -    | 136                 | -                       | -     | -    | -    | -    |
| 32                  | -                       | -     | -    | -    | -    | 67                  | -                       | -     | -    | -    | -    | 102                 | 101 4/16                | 15.3  | 24.1 | 29.6 | 51.3 | 137                 | 136 11/16               | 19.5  | 32.3 | 40.0 | 71.2 |
| 33                  | 32 6/16                 | 5.0   | 7.2  | 9.0  | 18.5 | 68                  | 67 13/16                | 10.4  | 16.5 | 19.8 | 35.7 | 103                 | -                       | -     | -    | -    | -    | 138                 | -                       | -     | -    | -    | -    |
| 34                  | -                       | -     | -    | -    | -    | 69                  | -                       | -     | -    | -    | -    | 104                 | 103 4/16                | 15.6  | 24.6 | 30.2 | 52.3 | 139                 | 138 11/16               | 19.8  | 32.8 | 40.6 | 71.8 |
| 35                  | 34 5/16                 | 5.4   | 7.7  | 9.6  | 19.5 | 70                  | 69 12/16                | 10.7  | 17.0 | 20.3 | 36.7 | 105                 | -                       | -     | -    | -    | -    | 140                 | -                       | -     | -    | -    | -    |
| 36                  | -                       | -     | -    | -    | -    | 71                  | -                       | -     | -    | -    | -    | 106                 | 105 3/16                | 15.8  | 25.0 | 30.7 | 53.2 | 141                 | 140 10/16               | 20.0  | 33.3 | 41.1 | 72.3 |
| 37                  | 36 5/16                 | 5.7   | 8.2  | 10.2 | 20.6 | 72                  | 71 12/16                | 11.0  | 17.4 | 20.8 | 37.7 | 107                 | -                       | -     | -    | -    | -    | 142                 | -                       | -     | -    | -    | -    |
| 38                  | -                       | -     | -    | -    | -    | 73                  | -                       | -     | -    | -    | -    | 108                 | 107 3/16                | 16.1  | 25.5 | 31.3 | 54.2 | 143                 | 142 10/16               | 20.2  | 33.9 | 41.7 | 72.8 |
| 39                  | 38 4/16                 | 6.0   | 8.7  | 10.8 | 21.5 | 74                  | 73 11/16                | 11.3  | 17.9 | 21.4 | 38.7 | 109                 | -                       | -     | -    | -    | -    | 144                 | -                       | -     | -    | -    | -    |
| 40                  | -                       | -     | -    | -    | -    | 75                  | -                       | -     | -    | -    | -    | 110                 | 109 2/16                | 16.4  | 25.9 | 31.9 | 55.2 |                     |                         |       |      |      |      |
| 41                  | 40 4/16                 | 6.2   | 9.2  | 11.4 | 22.3 | 76                  | 75 11/16                | 11.6  | 18.4 | 22.0 | 39.6 | 111                 | -                       | -     | -    | -    | -    |                     |                         |       |      |      |      |
| 42                  | -                       | -     | -    | -    | -    | 77                  | -                       | -     | -    | -    | -    | 112                 | 111 2/16                | 16.7  | 26.4 | 32.5 | 56.1 |                     |                         |       |      |      |      |
| 43                  | 42 3/16                 | 6.4   | 9.7  | 12.0 | 23.1 | 78                  | 77 10/16                | 11.9  | 18.9 | 22.7 | 40.5 | 113                 | -                       | -     | -    | -    | -    |                     |                         |       |      |      |      |
| 44                  | -                       | -     | -    | -    | -    | 79                  | -                       | -     | -    | -    | -    | 114                 | 113 1/16                | 17.0  | 26.8 | 33.1 | 57.0 |                     |                         |       |      |      |      |
| 45                  | 44 3/16                 | 6.7   | 10.2 | 12.6 | 23.9 | 80                  | 79 10/16                | 12.2  | 19.4 | 23.3 | 41.4 | 115                 | -                       | -     | -    | -    | -    |                     |                         |       |      |      |      |
| 46                  | -                       | -     | -    | -    | -    | 81                  | -                       | -     | -    | -    | -    | 116                 | 115 1/16                | 17.3  | 27.3 | 33.7 | 57.9 |                     |                         |       |      |      |      |



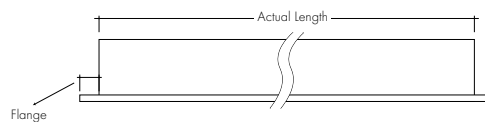
**Power Consumption**

Tested at Full Power with PDC Series power supplies.

Standard Nominal Lengths offered provide minimal shadowing. For alternate lengths, please consult Inside Sales with specific request.

**High Efficacy (HE64)**

| Nominal Length (in) | Back Feed Actual Length | Watts | Nominal Length (in) | Back Feed Actual Length | Watts | Nominal Length (in) | Back Feed Actual Length | Watts | Nominal Length (in) | Back Feed Actual Length | Watts |
|---------------------|-------------------------|-------|---------------------|-------------------------|-------|---------------------|-------------------------|-------|---------------------|-------------------------|-------|
|                     |                         | VHO   |                     |                         | VHO   |                     |                         | VHO   |                     |                         | VHO   |
| 12                  | 11 8/16                 | 7.6   | 47                  | 46 5/16                 | 28.2  | 82                  | 81 2/16                 | 50.4  | 117                 | -                       | -     |
| 13                  | 13                      | 7.6   | 48                  | 47 13/16                | 29.5  | 83                  | 82 10/16                | 51.7  | 118                 | 117 8/16                | 72.8  |
| 14                  | -                       | -     | 49                  | -                       | -     | 84                  | -                       | -     | 119                 | 119                     | 73.3  |
| 15                  | 14 8/16                 | 8.9   | 50                  | 49 5/16                 | 30.1  | 85                  | 84 3/16                 | 52.3  | 120                 | -                       | -     |
| 16                  | -                       | -     | 51                  | 50 14/16                | 31.4  | 86                  | 85 11/16                | 53.6  | 121                 | 120 8/16                | 74.4  |
| 17                  | 16                      | 9.5   | 52                  | -                       | -     | 87                  | -                       | -     | 122                 | -                       | -     |
| 18                  | 17 9/16                 | 10.7  | 53                  | 52 6/16                 | 32.0  | 88                  | 87 3/16                 | 54.2  | 123                 | 122                     | 74.8  |
| 19                  | -                       | -     | 54                  | 53 14/16                | 33.3  | 89                  | 88 11/16                | 55.5  | 124                 | 123 8/16                | 75.6  |
| 20                  | 19 1/16                 | 11.4  | 55                  | -                       | -     | 90                  | -                       | -     | 125                 | -                       | -     |
| 21                  | 20 9/16                 | 12.6  | 56                  | 55 6/16                 | 34.0  | 91                  | 90 3/16                 | 56.2  | 126                 | 125 1/16                | 76.0  |
| 22                  | -                       | -     | 57                  | 56 14/16                | 35.2  | 92                  | 91 12/16                | 57.5  | 127                 | 126 9/16                | 76.8  |
| 23                  | 22 1/16                 | 13.2  | 58                  | -                       | -     | 93                  | -                       | -     | 128                 | -                       | -     |
| 24                  | 23 9/16                 | 14.5  | 59                  | 58 7/16                 | 36.5  | 94                  | 93 4/16                 | 58.2  | 129                 | 128 1/16                | 77.2  |
| 25                  | -                       | -     | 60                  | 59 15/16                | 37.2  | 95                  | 94 12/16                | 59.5  | 130                 | 129 9/16                | 78.0  |
| 26                  | 25 2/16                 | 15.1  | 61                  | -                       | -     | 96                  | -                       | -     | 131                 | -                       | -     |
| 27                  | 26 10/16                | 16.4  | 62                  | 61 7/16                 | 38.4  | 97                  | 96 4/16                 | 60.1  | 132                 | 131 2/16                | 78.4  |
| 28                  | -                       | -     | 63                  | 62 15/16                | 39.1  | 98                  | 97 13/16                | 61.4  | 133                 | 132 10/16               | 79.2  |
| 29                  | 28 2/16                 | 17.0  | 64                  | -                       | -     | 99                  | -                       | -     | 134                 | -                       | -     |
| 30                  | 29 10/16                | 18.2  | 65                  | 64 8/16                 | 40.4  | 100                 | 99 5/16                 | 62.0  | 135                 | 134 2/16                | 79.6  |
| 31                  | -                       | -     | 66                  | 66                      | 41.0  | 101                 | 100 13/16               | 63.2  | 136                 | 135 10/16               | 80.3  |
| 32                  | 31 3/16                 | 18.9  | 67                  | -                       | -     | 102                 | -                       | -     | 137                 | -                       | -     |
| 33                  | 32 11/16                | 20.1  | 68                  | 67 8/16                 | 42.3  | 103                 | 102 5/16                | 63.8  | 138                 | 137 2/16                | 80.6  |
| 34                  | -                       | -     | 69                  | -                       | -     | 104                 | 103 13/16               | 65.0  | 139                 | 138 11/16               | 81.3  |
| 35                  | 34 3/16                 | 20.7  | 70                  | 69                      | 42.9  | 105                 | -                       | -     | 140                 | -                       | -     |
| 36                  | 35 11/16                | 22.0  | 71                  | 70 8/16                 | 44.2  | 106                 | 105 6/16                | 65.6  | 141                 | 140 3/16                | 81.7  |
| 37                  | -                       | -     | 72                  | -                       | -     | 107                 | 106 14/16               | 66.8  | 142                 | 141 11/16               | 82.4  |
| 38                  | 37 3/16                 | 22.6  | 73                  | 72 1/16                 | 44.9  | 108                 | -                       | -     | 143                 | -                       | -     |
| 39                  | 38 12/16                | 23.9  | 74                  | 73 9/16                 | 46.1  | 109                 | 108 6/16                | 67.4  | 144                 | 143 3/16                | 82.7  |
| 40                  | -                       | -     | 75                  | -                       | -     | 110                 | 109 14/16               | 68.5  |                     |                         |       |
| 41                  | 40 4/16                 | 24.5  | 76                  | 75 1/16                 | 46.7  | 111                 | -                       | -     |                     |                         |       |
| 42                  | 41 12/16                | 25.7  | 77                  | 76 9/16                 | 48.0  | 112                 | 111 7/16                | 69.6  |                     |                         |       |
| 43                  | -                       | -     | 78                  | -                       | -     | 113                 | 112 15/16               | 70.1  |                     |                         |       |
| 44                  | 43 4/16                 | 26.4  | 79                  | 78 2/16                 | 48.6  | 114                 | -                       | -     |                     |                         |       |
| 45                  | 44 13/16                | 27.6  | 80                  | 79 10/16                | 49.8  | 115                 | 114 7/16                | 71.2  |                     |                         |       |
| 46                  | -                       | -     | 81                  | -                       | -     | 116                 | 115 15/16               | 71.7  |                     |                         |       |





### Voltage Drop Calculator

The below chart assumes nominal voltage of 24 Volts and a Voltage Drop Allowance of 3% through the wire

| Wattage [W] | Maximum Wire Length From Power Supply to Start of Run [ft] |        |        |        |        |        |        |
|-------------|--|--------|--------|--------|--------|--------|--------|
|             | 12 AWG   | 14 AWG | 16 AWG | 18 AWG | 20 AWG | 22 AWG | 24 AWG |
| <b>5</b>    | 1088.2   | 684.4  | 430.3  | 270.6  | 170.2  | 107.1  | 67.3   |
| <b>10</b>   | 544.1  | 342.2  | 215.1  | 135.3  | 85.1   | 53.5   | 33.7   |
| <b>15</b>   | 362.7  | 228.1  | 143.4  | 90.2   | 56.7   | 35.7   | 22.4   |
| <b>20</b>   | 272.0  | 171.1  | 107.6  | 67.7   | 42.6   | 26.8   | 16.8   |
| <b>25</b>   | 217.6  | 136.9  | 86.1   | 54.1   | 34.0   | 21.4   | 13.5   |
| <b>30</b>   | 181.4  | 114.1  | 71.7   | 45.1   | 28.4   | 17.8   | 11.2   |
| <b>35</b>   | 155.5  | 97.8   | 61.5   | 38.7   | 24.3   | 15.3   | 9.6    |
| <b>40</b>   | 136.0  | 85.5   | 53.8   | 33.8   | 21.3   | 13.4   | 8.4    |
| <b>45</b>   | 120.9  | 76.0   | 47.8   | 30.1   | 18.9   | 11.9   | 7.5    |
| <b>50</b>   | 108.8  | 68.4   | 43.0   | 27.1   | 17.0   | 10.7   | 6.7    |
| <b>55</b>   | 98.9   | 62.2   | 39.1   | 24.6   | 15.5   | 9.7    | 6.1    |
| <b>60</b>   | 90.7   | 57.0   | 35.9   | 22.6   | 14.2   | 8.9    | 5.6    |
| <b>65</b>   | 83.7   | 52.6   | 33.1   | 20.8   | 13.1   | 8.2    | 5.2    |
| <b>70</b>   | 77.7   | 48.9   | 30.7   | 19.3   | 12.2   | 7.6    | 4.8    |
| <b>75</b>   | 72.5   | 45.6   | 28.7   | 18.0   | 11.3   | 7.1    | 4.5    |
| <b>80</b>   | 68.0   | 42.8   | 26.9   | 16.9   | 10.6   | 6.7    | 4.2    |
| <b>85</b>   | 64.0   | 40.3   | 25.3   | 15.9   | 10.0   | 6.3    | 4.0    |
| <b>90</b>   | 60.5   | 38.0   | 23.9   | 15.0   | 9.5    | 5.9    | 3.7    |
| <b>96</b>   | 56.7   | 35.6   | 22.4   | 14.1   | 8.9    | 5.6    | 3.5    |

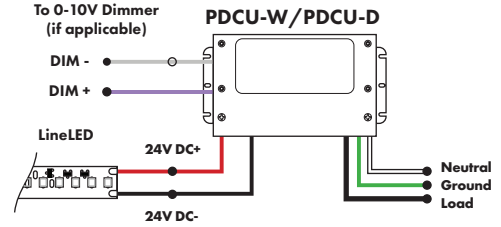
**Power Supplies**

See Power Supply instructions and spec sheet for wiring information. For a complete list of compatible dimmers, see Compatible Dimming Chart on the Resources page.

**Universal Power Supply 1% 120VAC - 277VAC**

| MODEL                    | POWER  | OUTPUT      |
|--------------------------|--|-------------|
| PDCU-D - IP20 Dry Series | 30 - 30 W<br>60 - 60 W<br>96 - 96 W<br>3X96 - 3X96 W | 24 - 24 VDC |
| PDCU-W - IP66 Wet Series | 96 - 96 W<br>3X96 - 3X96 W                           |             |

0-10V dims down to 1%, MLV/ELV/TRIAC dims down to 1%.  
For a complete list of compatible dimmers, see [Compatible Dimming Chart](#) on the Resources page.

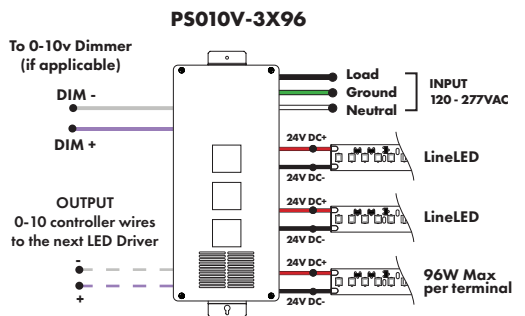
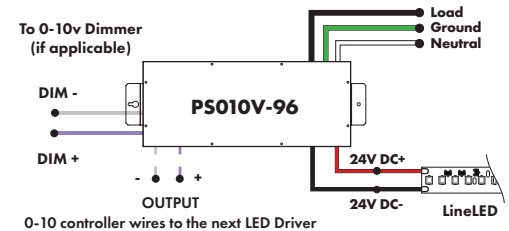


| MODELS        | PDCU-W 96W | PDCU-W 3X96W | PDCU-D 30W | PDCU-D 60W | PDCU-D 96W | PDCU-D 3X96W |
|---------------|------------|--------------|------------|------------|------------|--------------|
| <b>Length</b> | 8.66"      | 11.85"       | 6.10"      | 7.93"      | 8.25"      | 9.57"        |
| <b>Width</b>  | 3.73"      | 4.32"        | 3.35"      | 3.35"      | 4.10"      | 5.94"        |
| <b>Depth</b>  | 1.61"      | 1.81"        | 1.33"      | 1.32"      | 1.56"      | 1.13"        |

**0-10V Dimming Power Supplies 0.1% 120VAC - 277VAC**

| MODEL  | POWER                              | OUTPUT      | DIMMING                           |
|--|------------------------------------|-------------|-----------------------------------|
| PS010V - 0-10V Power Supply<br>dims down to 0.1% | 96 - 96 Watt<br>3X96 - 3 X 96 Watt | 24 - 24 VDC | LIN - Linear<br>LOG - Logarithmic |

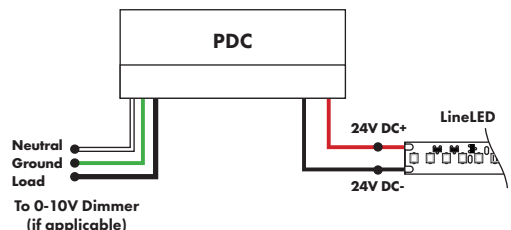
| MODELS        | 96W    | 3X96   |
|---------------|--------|--------|
| <b>Length</b> | 14.40" | 15.75" |
| <b>Width</b>  | 5.20"  | 6.62"  |
| <b>Depth</b>  | 2.60"  | 4.95"  |



**Triac, MLV, & ELV Compatible Dimmers**

| MODEL                     | POWER         | OUTPUT      |
|---------------------------|---------------|-------------|
| PDC - (IP20) Power Supply | 96 - 96 Watts | 24 - 24 VDC |

| MODELS        | 96W   |
|---------------|-------|
| <b>Length</b> | 8.25" |
| <b>Width</b>  | 4.10" |
| <b>Depth</b>  | 1.56" |



**Power Supplies**

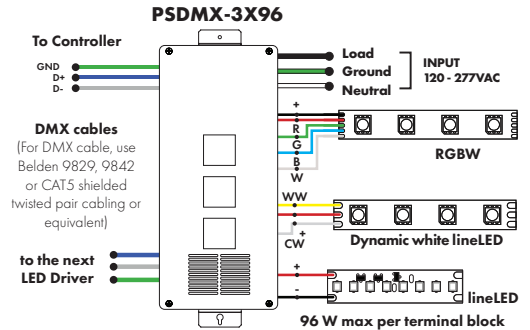
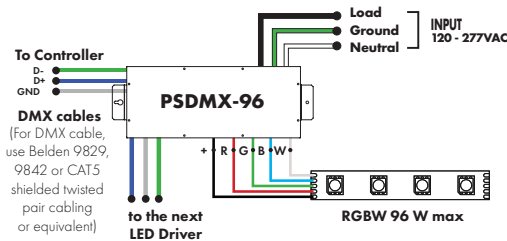
See Power Supply instructions and spec sheet for wiring information. For a complete list of compatible dimmers, see Compatible Dimming Chart on the Resources page.

**DMX Dimming Power Supplies 120VAC - 277VAC**

| MODEL                                       | POWER                              | OUTPUT      |
|---|------------------------------------|-------------|
| PSDMX - DMX Power Supply<br>dims down to 0% | 96 - 96 Watt<br>3X96 - 3 X 96 Watt | 24 - 24 VDC |

Features eldoLED's LINEARdrive configurable dimmable drivers

| MODELS        | 96W    | 3X96   |
|---------------|--------|--------|
| <b>Length</b> | 14.40" | 15.75" |
| <b>Width</b>  | 5.20"  | 6.62"  |
| <b>Depth</b>  | 2.60"  | 4.95"  |

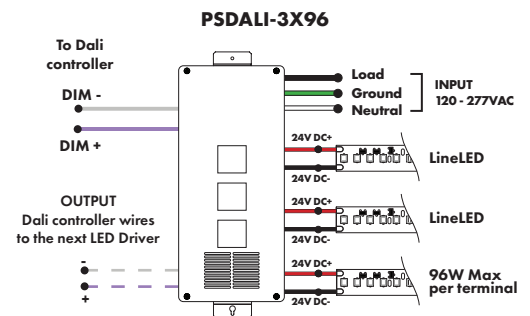
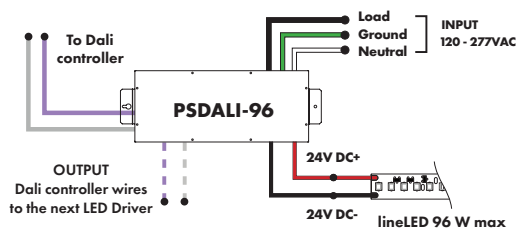


**DALI 0% Dimming Power Supplies 120VAC - 277VAC**

| MODEL   | POWER                              | OUTPUT      |
|---|------------------------------------|-------------|
| PSDALI - DALI Power Supply<br>dims down to 0% | 96 - 96 Watt<br>3X96 - 3 X 96 Watt | 24 - 24 VDC |

Features eldoLED's LINEARdrive configurable dimmable drivers

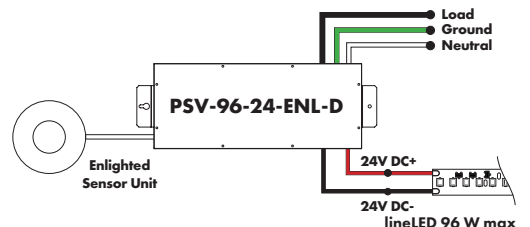
| Model         | 96W    | 3X96   |
|---------------|--------|--------|
| <b>Length</b> | 14.40" | 15.75" |
| <b>Width</b>  | 5.20"  | 6.62"  |
| <b>Depth</b>  | 2.60"  | 4.95"  |



**Enlighted Enabled Dimming Power Supplies 120VAC - 277VAC**

| MODEL            | POWER        | OUTPUT      | DIMMING                                    | LOCATION |
|------------------|--------------|-------------|--|----------|
| PSV - PSV Series | 96 - 96 Watt | 24 - 24 VDC | ENL - Enlighted Dimming<br>dims down to 0% | D - Damp |

| Model         | 96W    |
|---------------|--------|
| <b>Length</b> | 14.40" |
| <b>Width</b>  | 5.20"  |
| <b>Depth</b>  | 2.60"  |



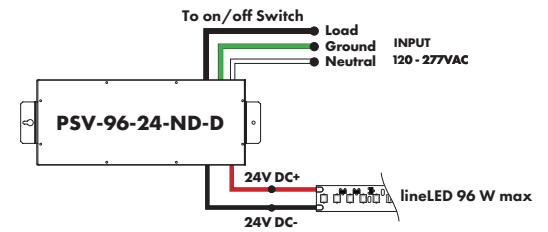
### Power Supplies

See Power Supply instructions and spec sheet for wiring information. For a complete list of compatible dimmers, see Compatible Dimming Chart on the Resources page.

#### Non-Dimming Power Supply 120VAC - 277VAC

| MODEL            | POWER        | OUTPUT      | DIMMING          | LOCATION |
|------------------|--------------|-------------|------------------|----------|
| PSV - PSV Series | 96 - 96 Watt | 24 - 24 VDC | ND - Non Dimming | D - Damp |

| MODELS | 96W    |
|--------|--------|
| Length | 14.40" |
| Width  | 5.20"  |
| Depth  | 2.60"  |



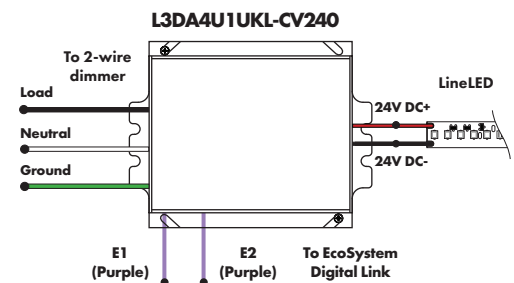
Luminii is a Lutron OEM Advantage Partner

#### Lutron Power Supplies 1%

| MODEL            |
|------------------|
| L3DA4U1UKL-CV240 |

HiLume™ 1% EcoSystem Voltage LED driver  
40W max

| MODELS | L3DA4U1UKL-CV240 |
|--------|------------------|
| Length | 4.98"            |
| Width  | 4.00"            |
| Depth  | 2.62"            |



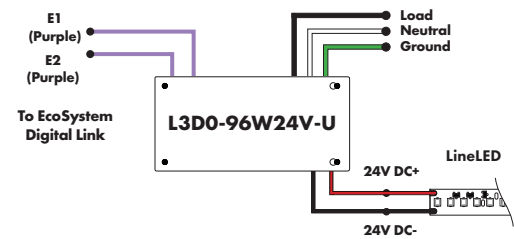
Luminii is a Lutron OEM Advantage Partner

#### Lutron Power Supplies 0.1%

| MODEL         |
|---------------|
| L3D0-96W24V-U |

HiLume™ 0.1% EcoSystem Voltage LED Driver with Soft-On, Fade-to-Black™  
96W max

| MODELS | L3D0   |
|--------|--------|
| Length | 10.50" |
| Width  | 5.50"  |
| Depth  | 2.00"  |



#### In-Ground Power Supplies

| MODEL   | POWER              | OUTPUT      | INPUT                            |
|---|--------------------|-------------|----------------------------------|
| IG - In ground CVE Series<br>CVE - ELV Dimming<br>DALI - eidoLED Dali dimming<br>Both dims down to 0% | 96X2 - 2 X 96 Watt | 24 - 24 VDC | Blank - 120 V<br>277 - 240/277 V |

| MODELS | Dual Circuit |
|--------|--------------|
| Length | 8.40"        |
| Width  | 8.30"        |
| Depth  | 8.10"        |

